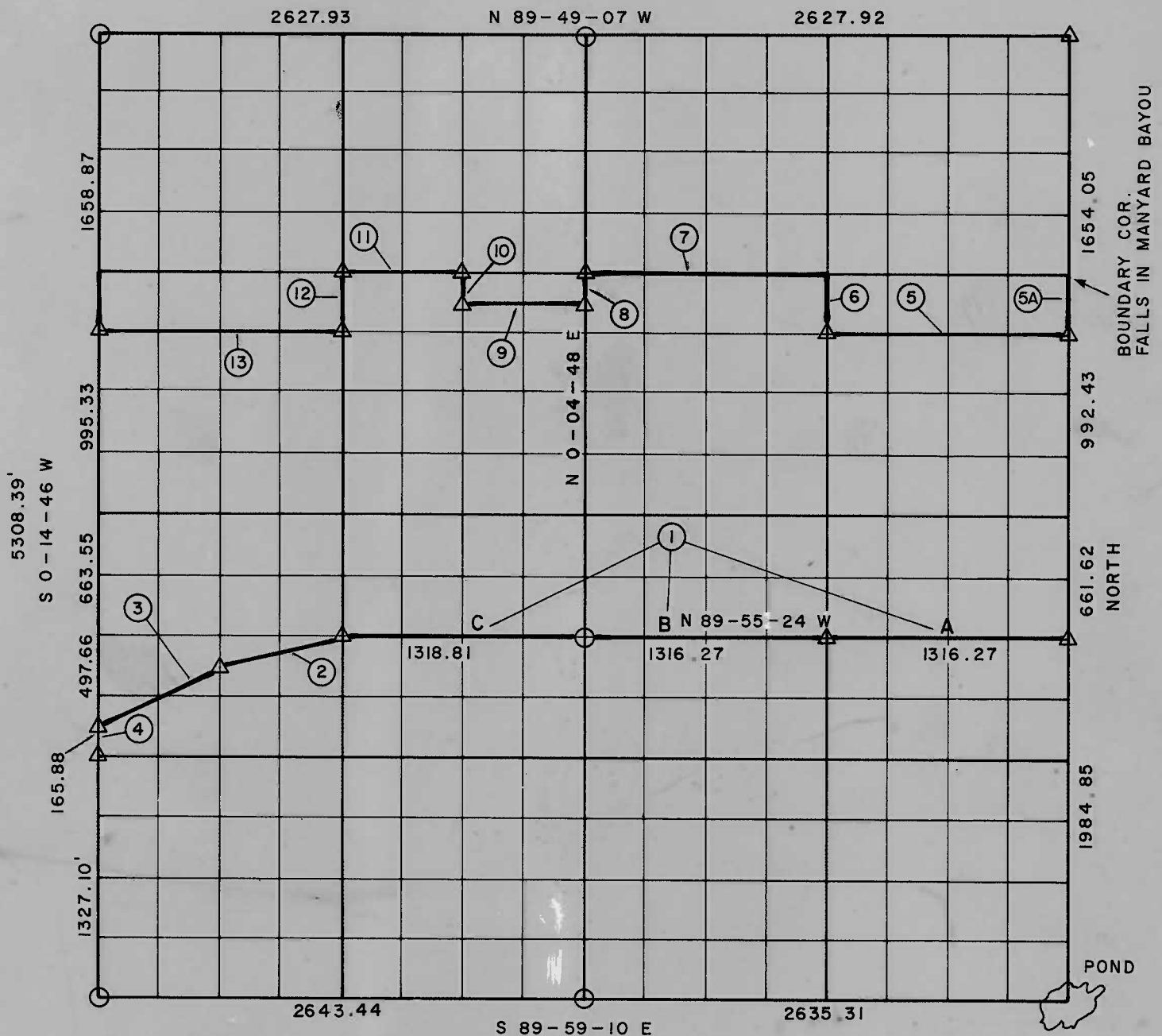


RECORD BOUNDARY PLAT

WEBBERS FALLS LOCK & DAM 16
ARKANSAS RIVER, OKLAHOMA

SEC 25 T 15 N R 19 E COUNTY MUSKOGEE



Course No.	Distance	Bearing	Course No.	Distance	Bearing
1	3951.35	N 89-55-24 W	13	1316.39	N 89-52-16 W
2	680.29	S 75-58-10 W			
3	739.18	S 63-24-08 W			
4	165.88	S 0-14-46 W			
5	1315.11	N 89-52-16 W			
5A	330.81	North			
6	331.05	N 0-02-24 E			
7	1314.88	N 89-51-38 W			
8	165.65	S 0-04-48 W			
9	658.07	N 89-51-57 W			
10	165.71	N 0-07-17 E			
11	657.95	N 89-51-38 W			
12	331.53	S 0-09-17 W			

Certificate of Survey Field Book No. A-2987 Date April 1969

I hereby certify that the above plat is a true and correct representation of the survey made in section 5, T 15 N, R 19 E, Muskogee County, Oklahoma.

Surveys performed by C. of E. party

LEGEND

- ▲ MONUMENT
- ORIGINAL CORNER
- IRON PIN

Clarence H. Anderson
Registered Land Surveyor