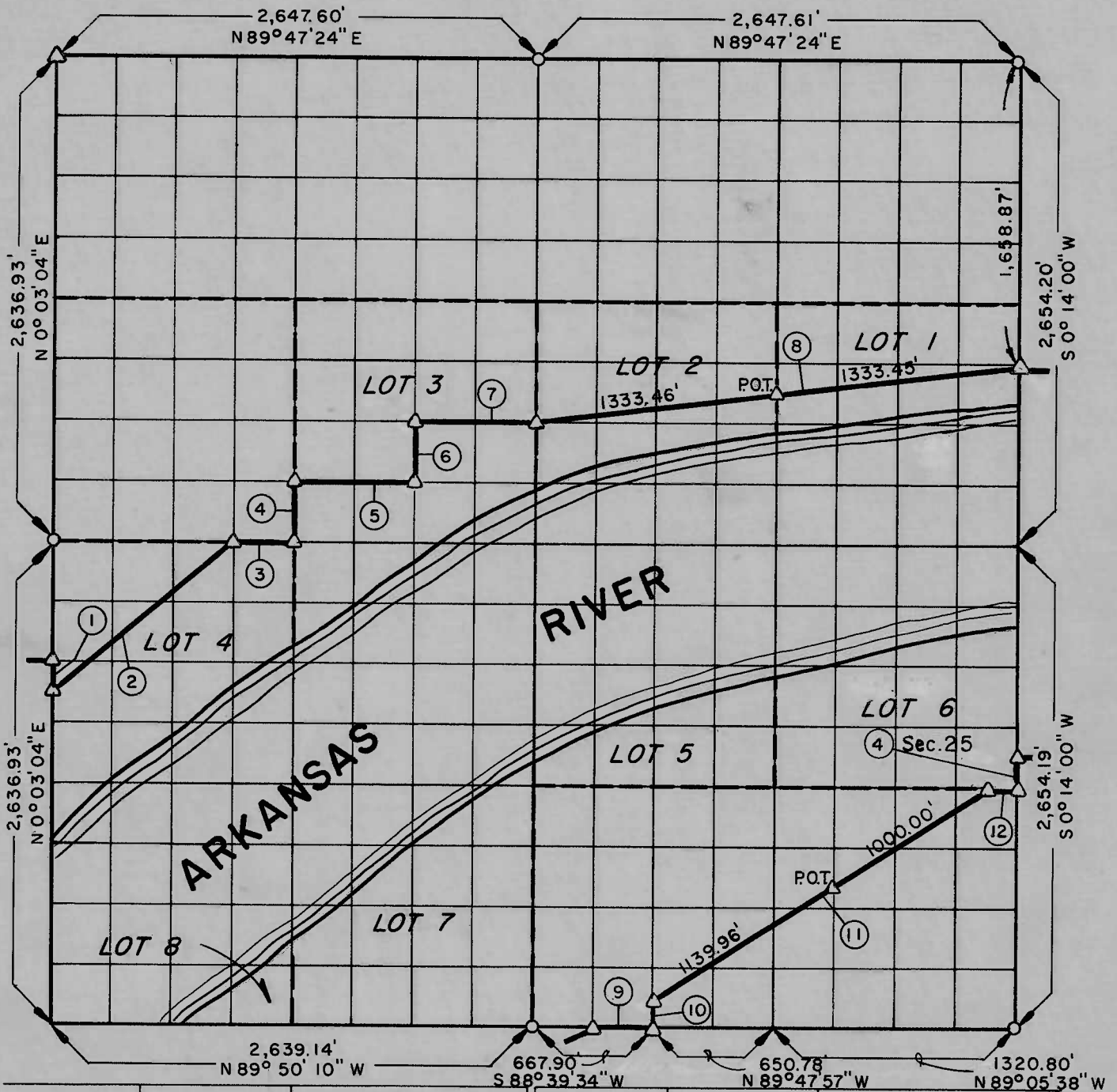


PARTIAL BOUNDARY SURVEYS
WEBBERS FALLS LOCK & DAM NO. 16
ARKANSAS RIVER, OKLAHOMA

Performed Under Contract Number DACW 56-75-C-0064

SEC. 26 T 15 N R 19 E COUNTY MUSKOGEE



Course No.	Distance	Bearing	Course No.	Distance	Bearing
1	165.77'	S -0° 03' 04\" E	4 (See 25)	165.88	N -0° 14' 00\" E
2	1,290.48'	N 50° 14' 14\" E			
3	330.42'	N 89° 58' 36\" E			
4	330.15'	N -0° 05' 49\" E			
5	660.97'	N 89° 57' 13\" E			
6	330.42'	N -0° 07' 11\" E			
7	661.10'	N 89° 55' 49\" E			
8	2,666.91'	N 82° 46' 59\" E			
9	333.95'	N 88° 39' 34\" E			
10	165.00'	N -0° 00' 23\" W			
11	2,139.96'	N 57° 51' 04\" E			
12	165.00'	N 89° 55' 48\" E			

Field Book No. A-3299 , Date 6-6-75

K.N. COX & ASSOCIATES - ENGINEERS

Under the Supervision of

U.S. ARMY ENGINEER DISTRICT, TULSA
CORPS OF ENGINEERS

SHEET 1 of 2

LEGEND

- △ MONUMENT
- ORIGINAL CORNER
- IRON PIN

CERTIFICATE OF SURVEY

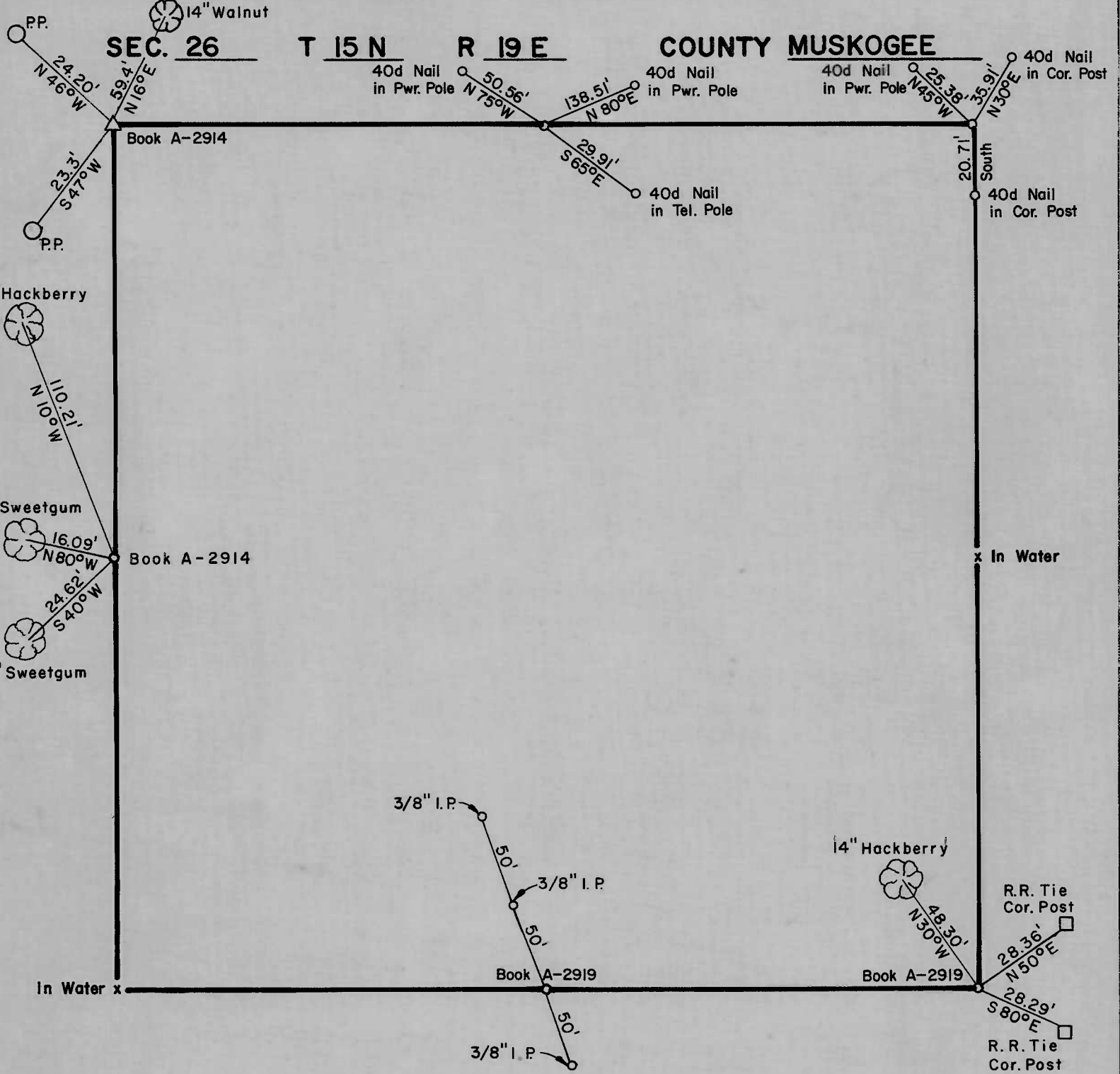
I HEREBY CERTIFY THAT THE ABOVE PLAT IS A TRUE AND CORRECT REPRESENTATION OF THE SURVEY MADE IN SECTION

26 T 15 N R 19 E MUSKOGEE COUNTY, OKLAHOMA

James R. Sutton
 REGISTERED LAND SURVEYOR

PARTIAL BOUNDARY SURVEYS
WEBBERS FALLS LOCK & DAM NO. 16
ARKANSAS RIVER, OKLAHOMA

Performed Under Contract Number DACW 56-75-C-0064



Field Book No. A-3299 , Date 7-17-75

K. N. COX & ASSOCIATES - ENGINEERS

Under the Supervision of

U.S. ARMY ENGINEER DISTRICT, TULSA
CORPS OF ENGINEERS

SHEET 2 of 2

LEGEND

- △ MONUMENT
- ORIGINAL CORNER
- IRON PIN