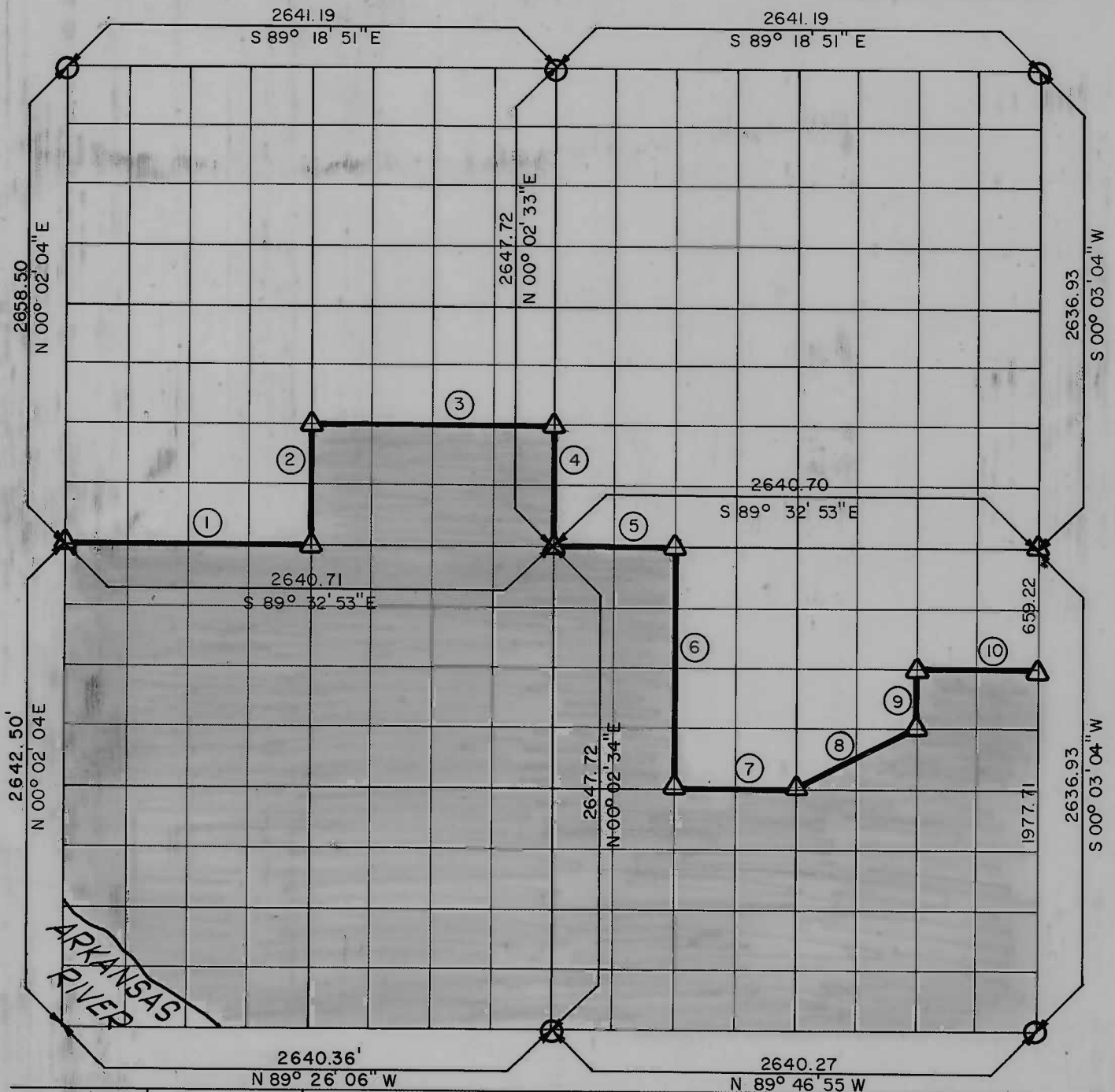


**PARTIAL BOUNDARY SURVEYS  
WEBBERS FALL LOCK AND DAM 16  
ARKANSAS RIVER, OKLAHOMA**

Performed Under Contract Number DACW 56-68-C-0266

SEC 27 T-15 -N R-19 -E COUNTY MUSKOGEE



Course No.	Distance	Bearing	Course No.	Distance	Bearing
1	1320.37	S 89° 32' 54" E			
2	663.28	N 00° 02' 17" E			
3	1320.39	S 89° 29' 23" E			
4	661.93	S 00° 02' 30" W			
5	660.17	S 89° 32' 52" E			
6	1322.51	S 00° 02' 39" W			
7	660.11	S 89° 39' 54" E			
8	736.52	N 63° 43' 12" E			
9	329.95	N 00° 02' 49" E			
10	660.15	S 89° 36' 24" E			

CERTIFICATE OF SURVEY Field Book No. A2914 Date: 12/2/68

HEREBY CERTIFY THAT THE ABOVE PLAT IS A TRUE AND CORRECT REPRESENTATION OF THE SURVEY MADE IN SECTION 27, T-15-N, R-19-E, MUSKOGEE COUNTY, OKLAHOMA

**HOLWAY ENGINEERS, INC.**  
Under the Supervision of  
**U.S. ARMY ENGINEER DISTRICT, TULSA**  
**CORPS OF ENGINEERS**

LEGEND  
 Δ MONUMENT  
 □ ORIGINAL CORNER  
 ○ IRON PIN

*Edward M. G.*  
REGISTERED PROFESSIONAL ENGINEER