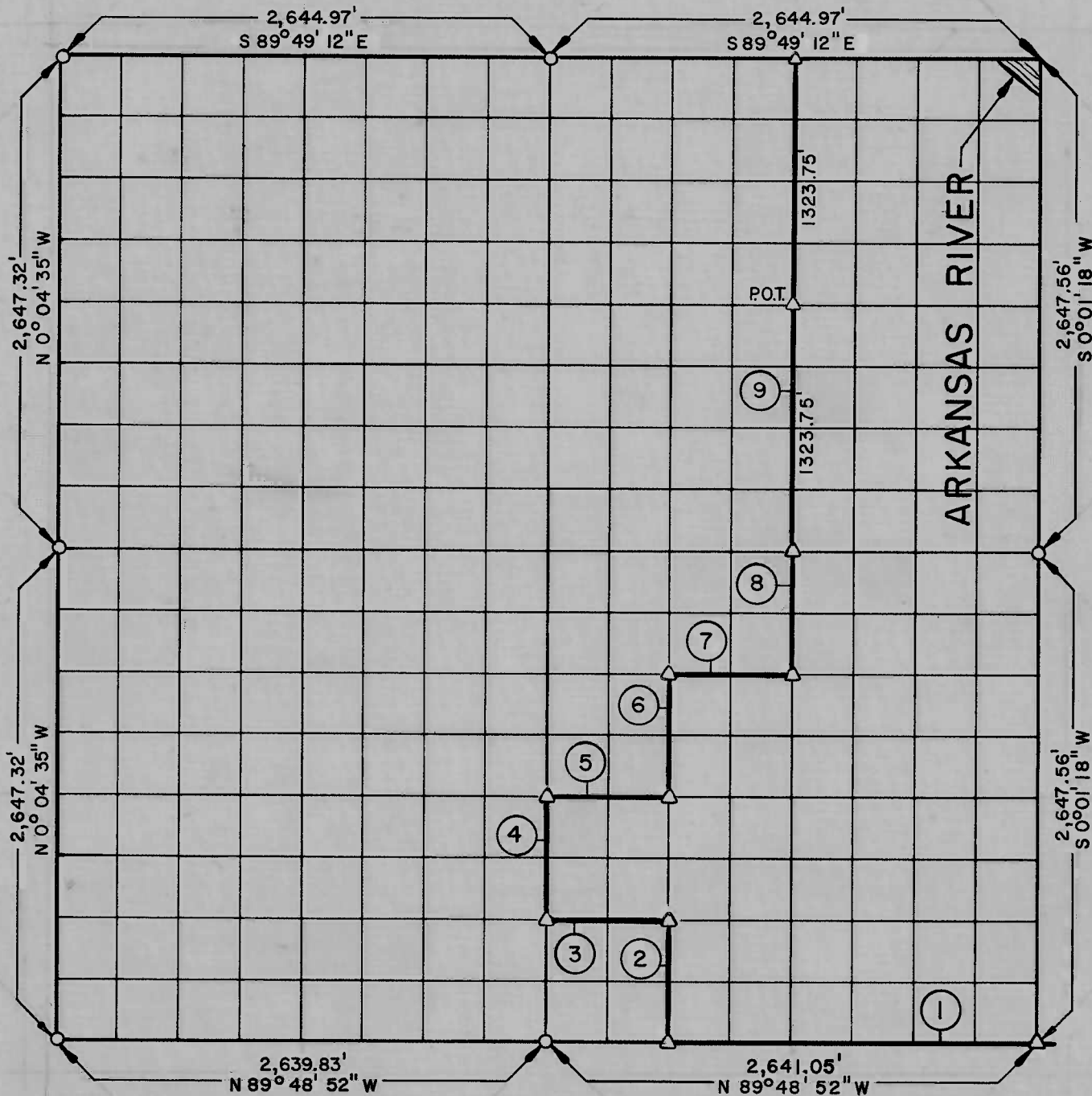


PARTIAL BOUNDARY SURVEYS
WEBBERS FALLS LOCK & DAM NO. 16
ARKANSAS RIVER, OKLAHOMA

Performed Under Contract Number DACW 56-75-C-0064

SEC. 33 T 15 N R 19 E COUNTY OKMULGEE



Course No.	Distance	Bearing	Course No.	Distance	Bearing
1	1,980.79	N 89° 48' 52" W			
2	661.86	N - 0° 00' 37" W			
3	660.39	N 89° 48' 54" W			
4	661.86	N - 0° 01' 15" W			
5	660.51	S 89° 48' 57" E			
6	661.86	N - 0° 00' 37" W			
7	660.63	S 89° 48' 59" E			
8	661.87	N - 0° 00' 01" E			
9	2,647.50	N - 0° 00' 01" E			

Field Book No. A-3301, Date 6-6-75

CERTIFICATE OF SURVEY

HEREBY CERTIFY THAT THE ABOVE PLAT IS A TRUE AND CORRECT REPRESENTATION OF THE SURVEY MADE IN SECTION 33, T 15 N, R 19 E, OKMULGEE COUNTY, OKLAHOMA

James R. Sultman
 REGISTERED LAND SURVEYOR

K. N. COX & ASSOCIATES - ENGINEERS

Under the Supervision of

**U.S. ARMY ENGINEER DISTRICT, TULSA
 CORPS OF ENGINEERS**

SHEET 1 of 2

LEGEND

- △ MONUMENT
- ORIGINAL CORNER
- IRON PIN

