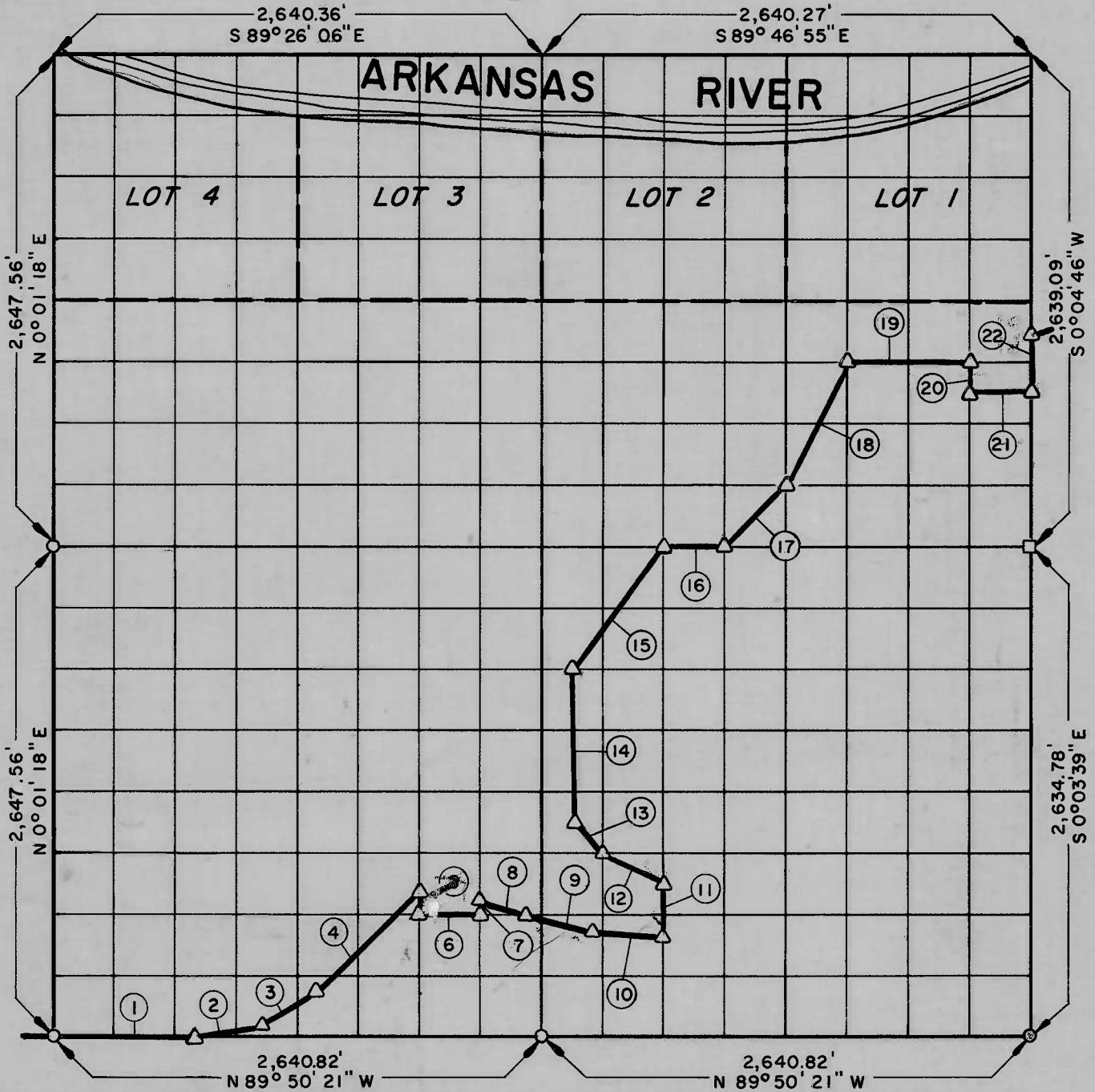


**PARTIAL BOUNDARY SURVEYS
WEBBERS FALLS LOCK & DAM NO. 16
ARKANSAS RIVER, OKLAHOMA**

Performed Under Contract Number DACW 56-75-C-0067

SEC. 34 T 15 N R 19 E COUNTY MUSKOGEE



Course No.	Distance	Bearing	Course No.	Distance	Bearing
1	852.00'	S 89° 50' 21" E	14	825.24'	N -0° 00' 39" E
2	363.00'	N 81° 00' 39" E	15	822.85'	N 36° 56' 54" E
3	338.00'	N 53° 49' 39" E	16	329.66'	S 89° 42' 01" E
4	697.50'	N 45° 29' 39" E	17	465.18'	N 45° 10' 29" E
5	87.64'	S -0° 01' 01" W	18	736.06'	N 26° 40' 07" E
6	330.09'	S 89° 48' 16" E	19	659.61'	S 89° 43' 51" E
7	56.52'	N -0° 00' 59" E	20	164.91'	S -0° 04' 19" W
8	272.98'	S 81° 43' 40" E	21	329.78'	S 89° 43' 33" E
9	352.63'	S 82° 31' 22" E	22	329.88'	N -0° 04' 46" E
10	374.86'	S 81° 01' 52" E			
11	248.67'	N -0° 00' 13" W			
12	369.44'	N 63° 15' 50" W			
13	233.76'	N 44° 52' 30" W			

Field Book No. A-3302, Date 6-6-75

CERTIFICATE OF SURVEY

HEREBY CERTIFY THAT THE ABOVE PLAT IS A TRUE AND CORRECT REPRESENTATION OF THE SURVEY MADE IN SECTION

34, T 15 N, R 19 E, MUSKOGEE COUNTY, OKLAHOMA

David R. Sutton
REGISTERED LAND SURVEYOR

K. N. COX & ASSOCIATES - ENGINEERS

Under the Supervision of

**U.S. ARMY ENGINEER DISTRICT, TULSA
CORPS OF ENGINEERS**

SHEET 1 of 2

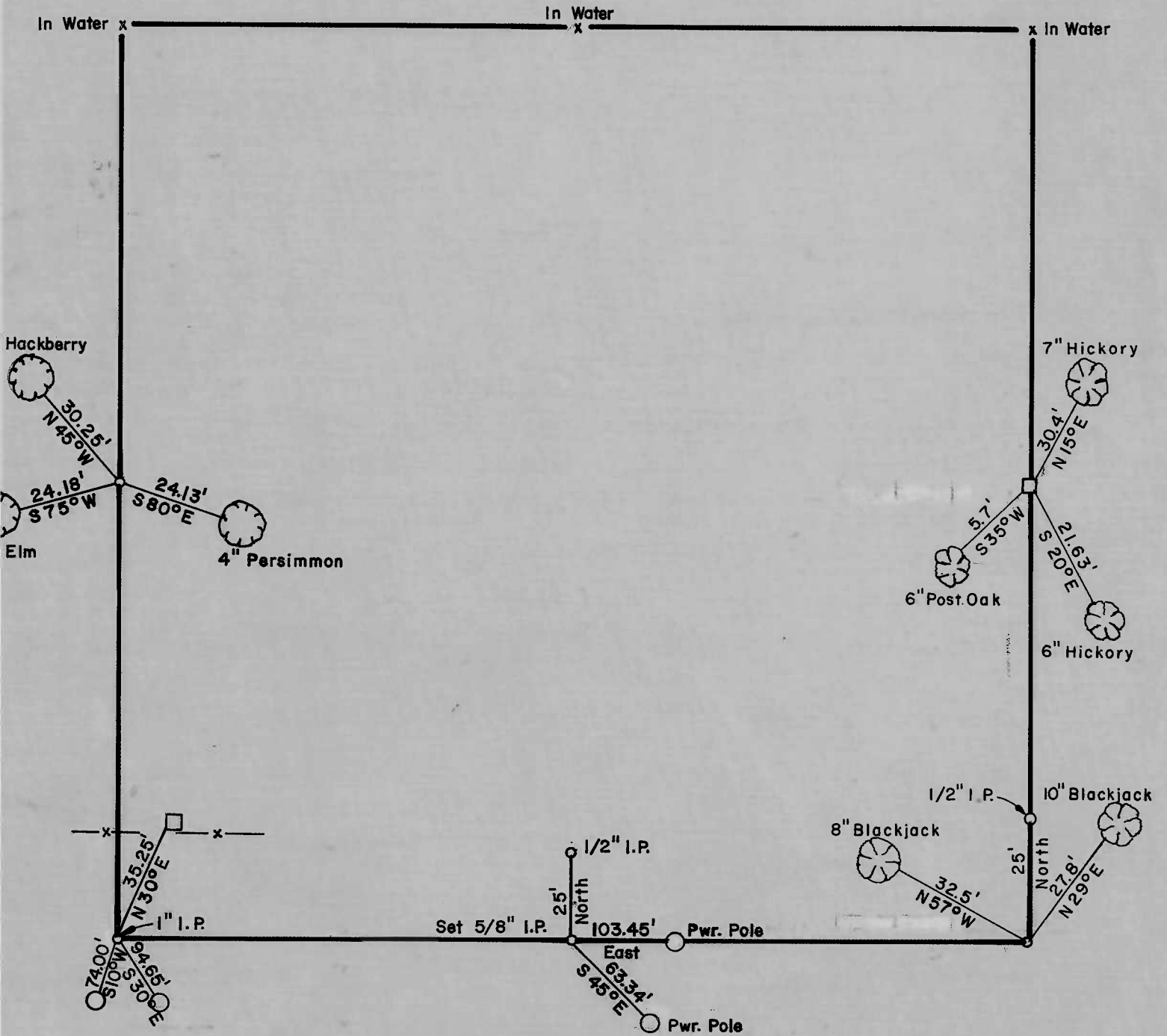
LEGEND

- △ MONUMENT
- ORIGINAL CORNER
- IRON PIN

PARTIAL BOUNDARY SURVEYS
WEBBERS FALLS LOCK & DAM NO. 16
ARKANSAS RIVER, OKLAHOMA

Performed Under Contract Number DACW 56-75-C-0064

SEC. 34 T 15 N R 19 COUNTY MUSKOGEE



Field Book No. A-3302 , Date 6-6-75

K.N. COX & ASSOCIATES - ENGINEERS

Under the Supervision of

U.S. ARMY ENGINEER DISTRICT, TULSA
CORPS OF ENGINEERS

LEGEND

- △ MONUMENT
- ORIGINAL CORNER
- IRON PIN

James R. Sifton