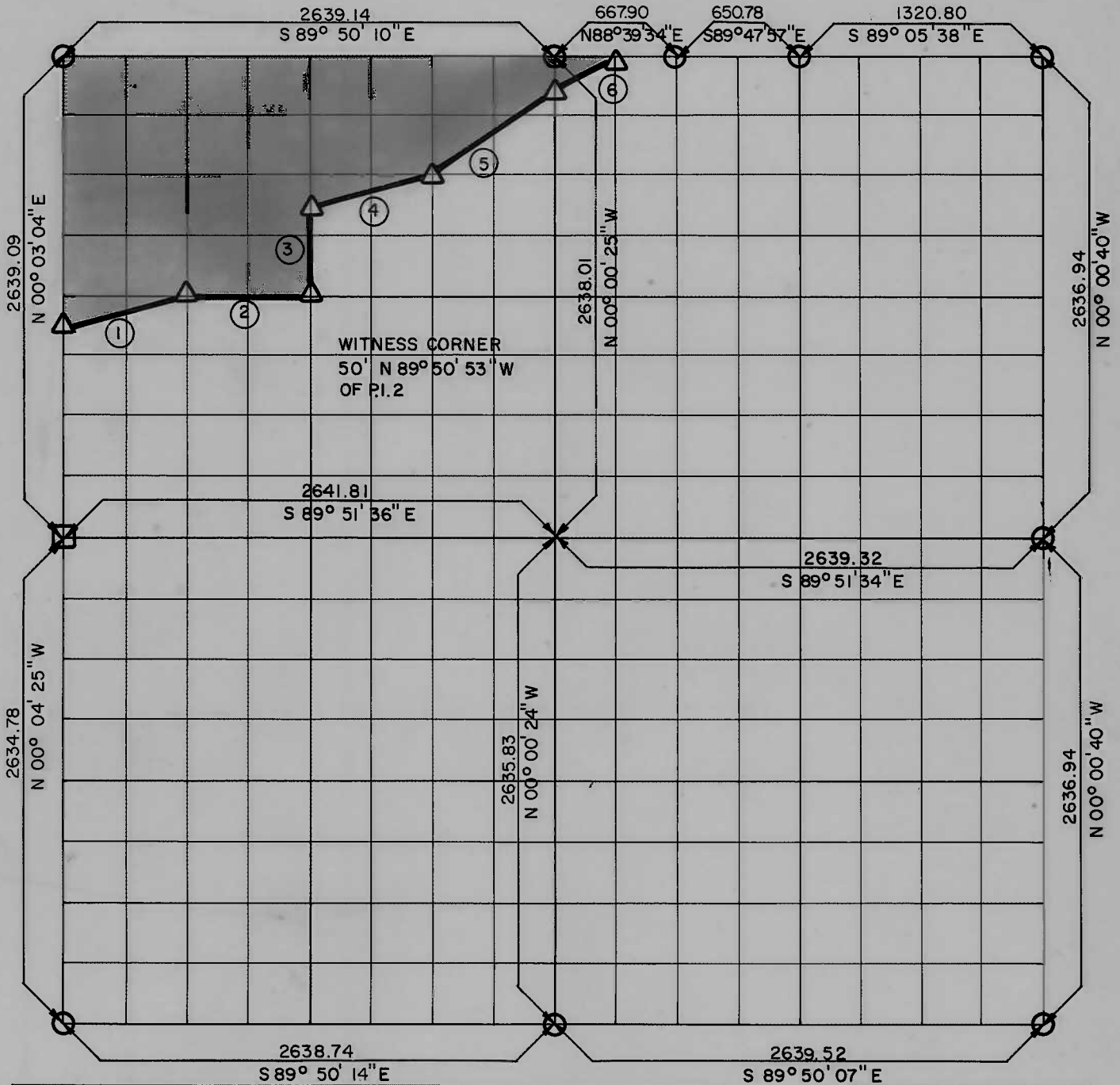


**PARTIAL BOUNDARY SURVEYS
WEBBERS FALL LOCK AND DAM 16
ARKANSAS RIVER, OKLAHOMA**

Performed Under Contract Number DACW 56-68-C-0266

SEC 35 T-15-N R-19-E COUNTY MUSKOGEE



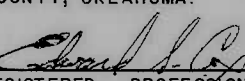
Course No.	Distance	Bearing	Course No.	Distance	Bearing
1	680.13	N 76° 07' 01" E			
2	660.12	S 89° 50' 53" E			
3	494.73	N 00° 01' 19" E			
4	679.86	N 76° 07' 12" E			
5	823.60	N 53° 14' 51" E			
6	368.36	N 63° 34' 29" E			

Field Book No. A 2919 Date: 12/2/68

CERTIFICATE OF SURVEY
HEREBY CERTIFY THAT THE ABOVE PLAT IS A TRUE AND CORRECT REPRESENTATION OF THE SURVEY MADE IN SECTION 35, T-15-N, R-19-E, MUSKOGEE COUNTY, OKLAHOMA.

HOLWAY ENGINEERS, INC.
Under the Supervision of
U.S. ARMY ENGINEER DISTRICT, TULSA
CORPS OF ENGINEERS

LEGEND
 Δ MONUMENT
 □ ORIGINAL CORNER
 ○ IRON PIN


REGISTERED PROFESSIONAL ENGINEER

ARKANSAS RIVER NAVIGATION

WEBBERS FALLS LOCK & DAM NO. 16
ARKANSAS RIVER, OKLAHOMA

Mapping of land depicted on this sheet was performed by Curry Engineering Co.
Muskogee, Oklahoma, under Contract No. DA-34-066-CIVENG-65-1363

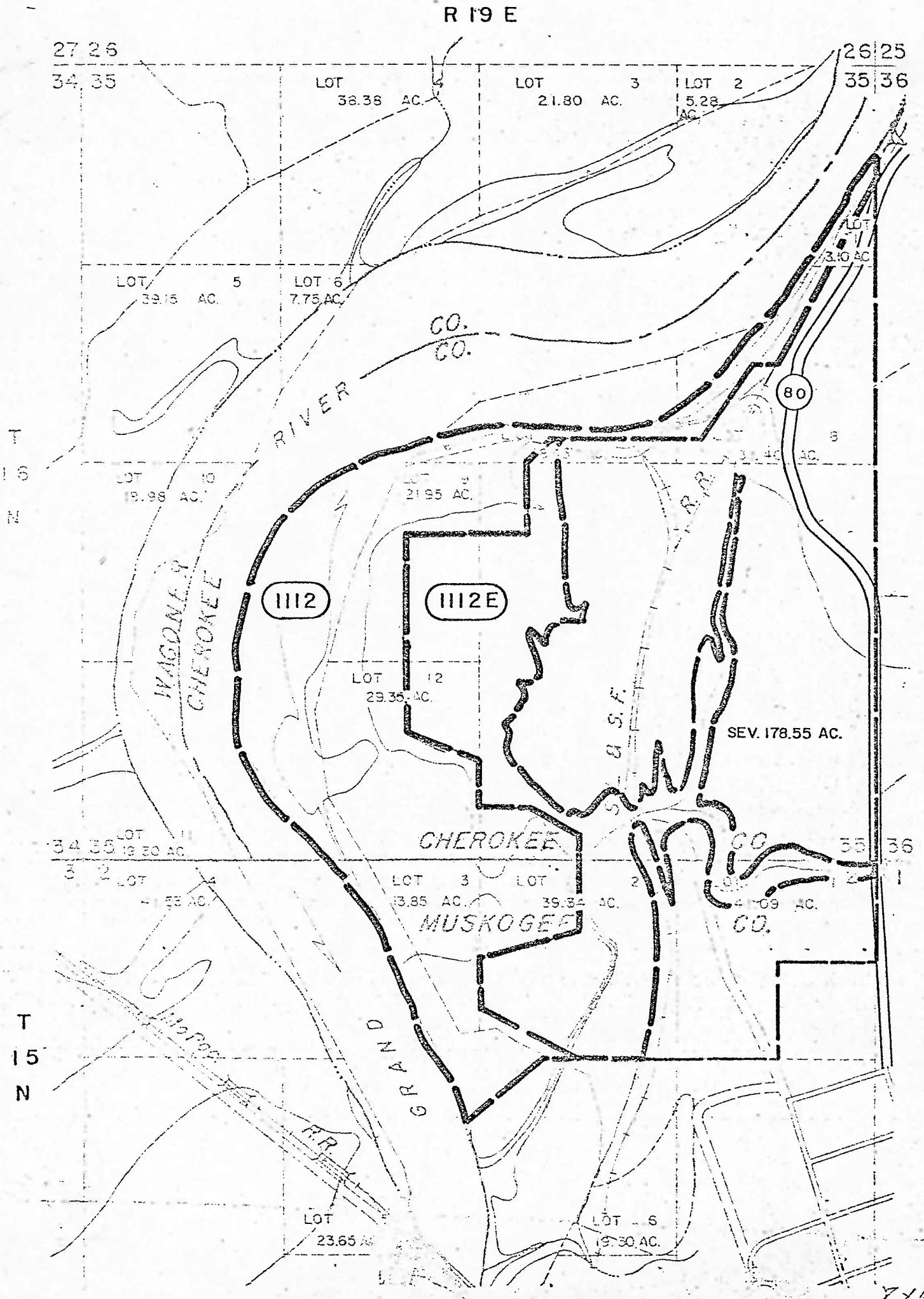
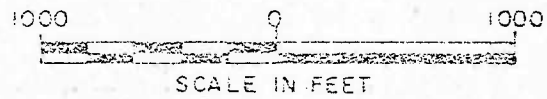
TRACT NO. 1112, 1112E

OWNER Yahola Sand and Gravel Co., et al

DATE 11-17-65
Rev 6-27-66 Sec. 35 T 15-N R 19-E

LEGEND

- SECTION AND LOT LINES - - - - -
- ACCRETION OR EROSION - - - - -
- PROPERTY LINE - - - - -
- PURCHASE AREA - - - - -



7114