



CORPS OF ENGINEERS

U. S. ARMY

ARKANSAS RIVER NAVIGATION

# WEBBERS FALLS LOCK & DAM NO. 16 ARKANSAS RIVER, OKLAHOMA

Mapping of land depicted on this sheet was performed by Curry Engineering Co.  
Muskogee, Oklahoma, under Contract No. DA-34-066-CIVENG-65-1363

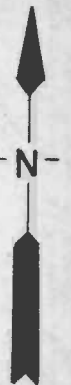
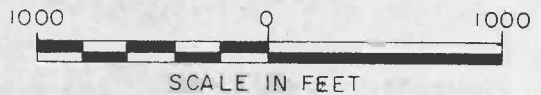
TRACT NO. 1102, 1102E-1, 1102E-2

OWNER Lucile Swindler Quan

DATE 11-17-65  
Rev 6-27-66  
1-3-68

### LEGEND

- SECTION AND LOT LINES - - - - -
- ACCRETION OR EROSION - · - - - -
- PROPERTY LINE - - - - -
- PURCHASE AREA - - - - -

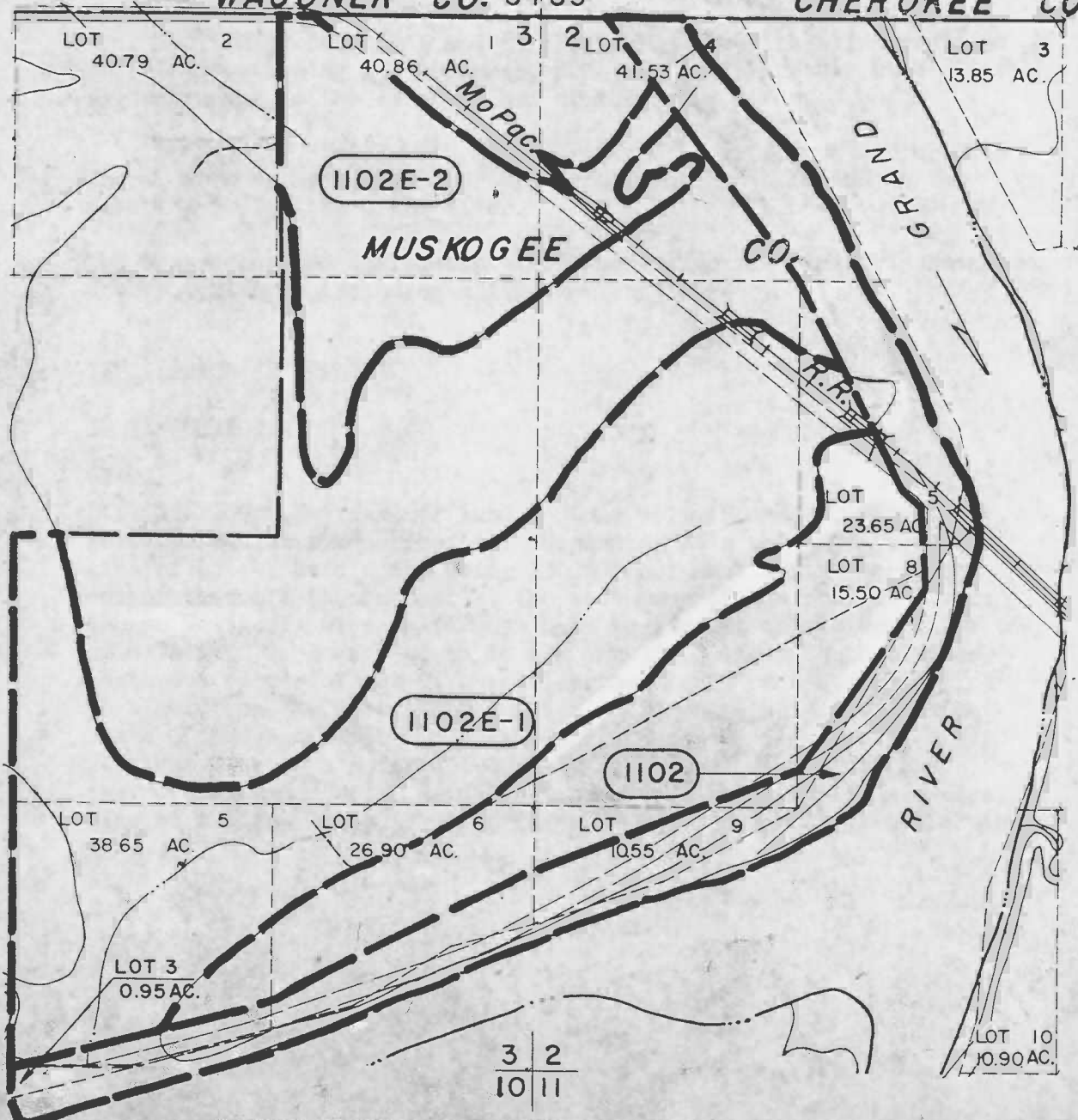


R 19 E

WAGONER CO. 34 35

CHEROKEE CO.

T  
15  
N



3 2  
10 11