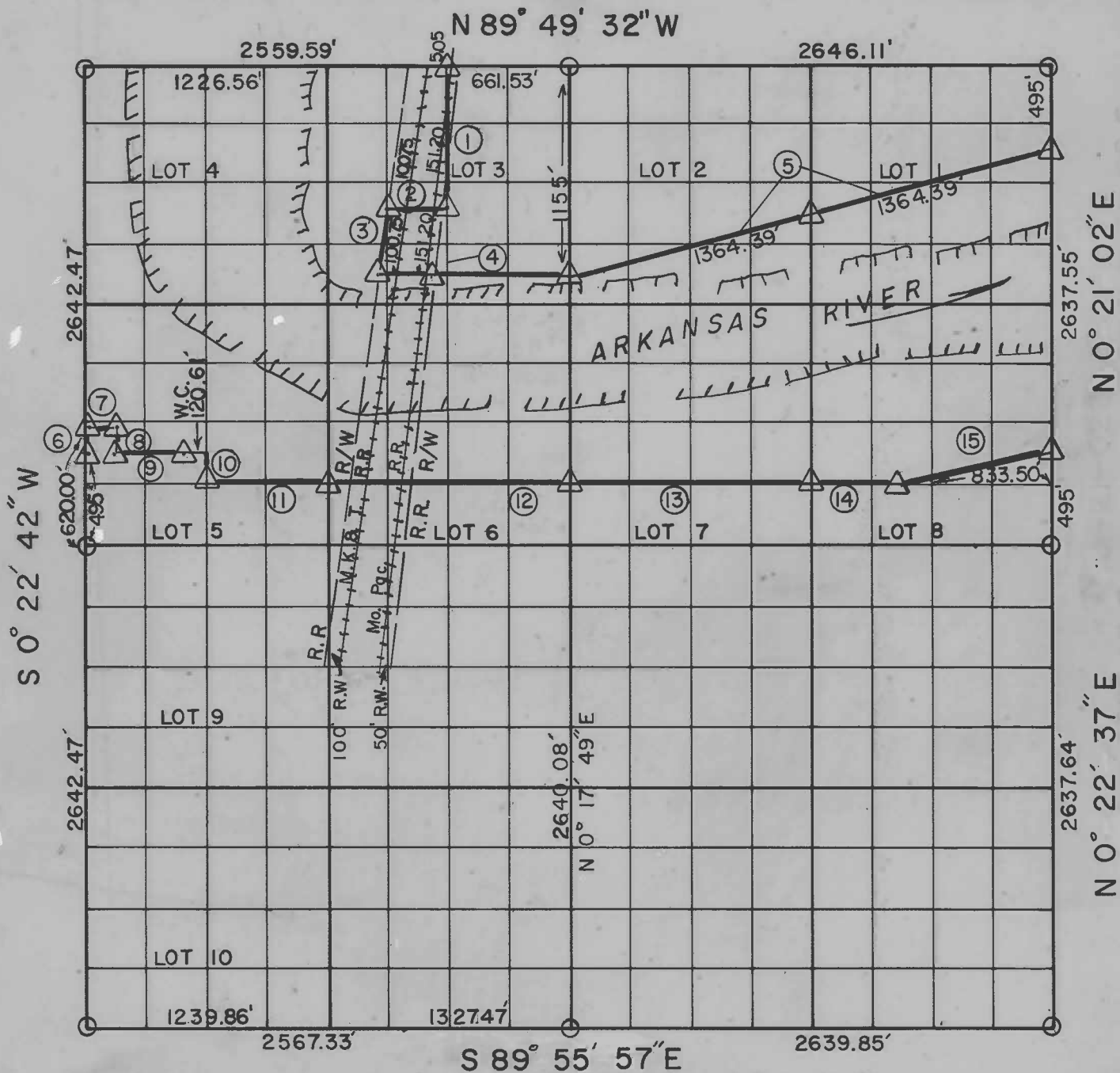


RECORD BOUNDARY PLAT

WEBBERS FALLS LOCK & DAM 16
ARKANSAS RIVER, OKLAHOMA

SEC 7 T 15 N R 19 E COUNTY MUSKOGEE



Course No.	Distance	Bearing	Course No.	Distance	Bearing
1	805.00	S 0° 17' 49" W	14	488.40	S 89 52 22 E
2	332.10	N 89 49 32 W	15	850.59	N 78 55 16 E
3	352.49	S 7 08 28 W			
4	1035.65	S 89 49 32 E			
5	2728.78	N 76 10 18 E			
6	124.55	N 0 22 42 E			
7	125.00	S 89 52 22 E			
8	125.00	S 0 22 42 W			
9	491.61	S 89 52 22 E			
10	165.12	S 0 17 45 W			
11	616.61	S 89 52 22 E			
12	1329.92	S 89 52 22 E			
13	1321.90	S 89 52 22 E			

Certificate of Survey
I hereby certify that the above plat is a true and correct representation of the survey made in section 25, T15N, R19E, Muskogee County, Oklahoma.

Field Book No. A 2998 Date SEPT. 1969

CORPS OF ENGINEERS, U. S. ARMY
TULSA, OKLAHOMA, DISTRICT

LEGEND
▲ MONUMENT
□ ORIGINAL CORNER
○ IRON PIN

CORRECTED 1-24-78

Harold L. Seim
Registered Land Surveyor # 689