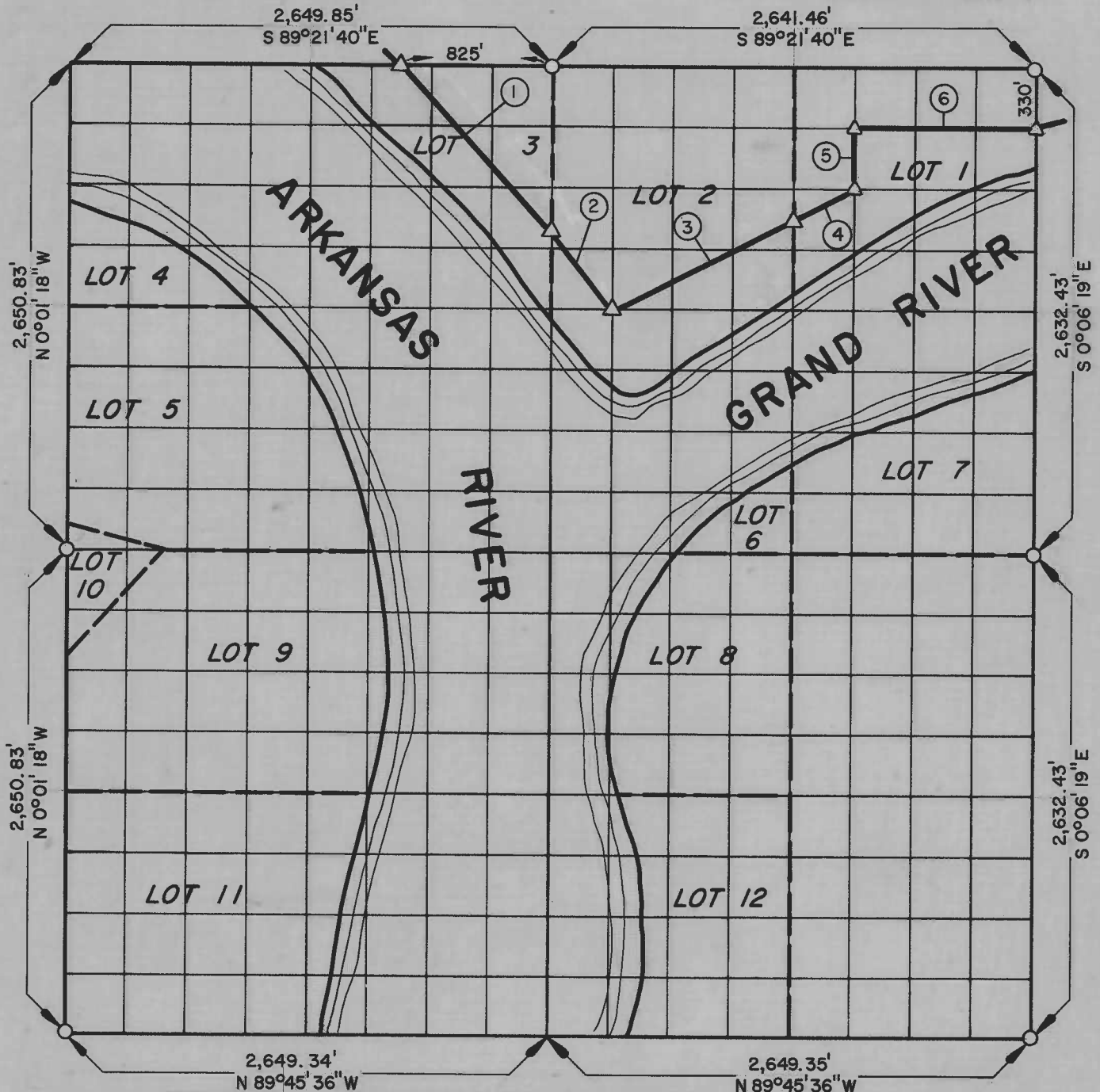


PARTIAL BOUNDARY SURVEYS
WEBBERS FALLS LOCK & DAM NO. 16
ARKANSAS RIVER, OKLAHOMA

Performed Under Contract Number DACW 56-75-C-0064

SEC. 9 T. 15 N. R. 19 E. COUNTY MUSKOGEE



Course No.	Distance	Bearing	Course No.	Distance	Bearing
1	1,173.39'	S 44°41' 22" E			
2	598.05'	S 33°30' 18" E			
3	1,102.98'	N 63°58' 29" E			
4	367.42'	N 63°57' 21" E			
5	330.00'	N 0°04' 20" W			
6	990.74'	S 89°21' 40" E			

Field Book No. A-3296 , Date 6-6-75

CERTIFICATE OF SURVEY
 I HEREBY CERTIFY THAT THE ABOVE PLAT IS A TRUE AND CORRECT REPRESENTATION OF THE SURVEY MADE IN SECTION 9 , T 15 N. , R 19 E. , MUSKOGEE COUNTY, OKLAHOMA
Dave R. Sultan
 REGISTERED LAND SURVEYOR

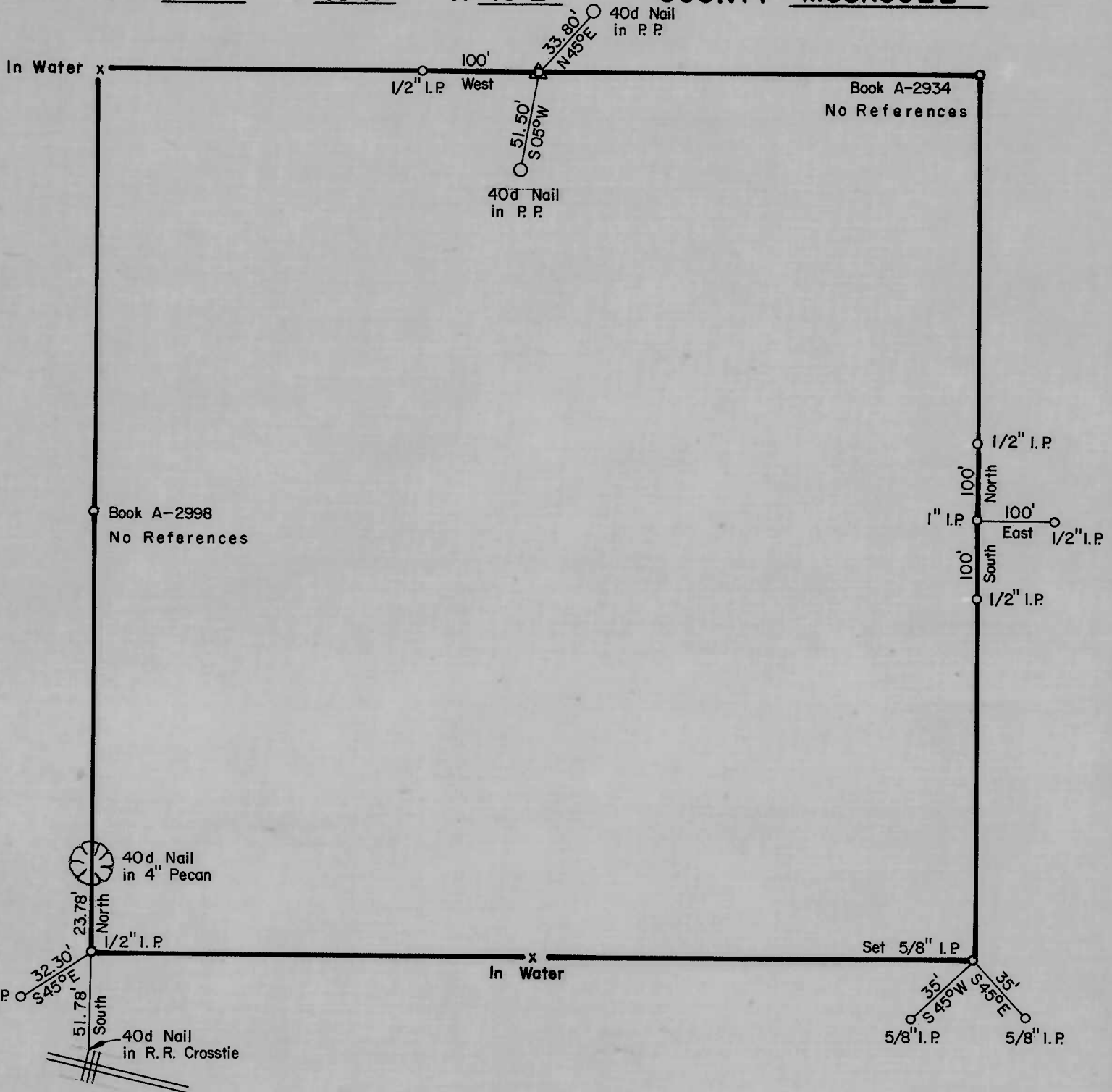
K. N. COX & ASSOCIATES - ENGINEERS
 Under the Supervision of
U.S. ARMY ENGINEER DISTRICT, TULSA
CORPS OF ENGINEERS
 SHEET 1 of 2

LEGEND
 Δ MONUMENT
 □ ORIGINAL CORNER
 ○ IRON PIN

PARTIAL BOUNDARY SURVEYS
WEBBERS FALLS LOCK & DAM NO. 16
ARKANSAS RIVER, OKLAHOMA

Performed Under Contract Number DACW 56-75 - C -0064

SEC. 9 T 15 N R 19 E COUNTY MUSKOGEE



Field Book No. A-3296 , Date 6-6-75

K. N. COX & ASSOCIATES - ENGINEERS

Under the Supervision of

U.S. ARMY ENGINEER DISTRICT, TULSA
CORPS OF ENGINEERS

SHEET 2 of 2

LEGEND

- △ MONUMENT
- ORIGINAL CORNER
- IRON PIN

Jane R. Sipton