

Course Number	Distance	Bearing	Course Number	Distance	Bearing
1	660.00	N 89° 52' 45" E			
2	1175.00	S 26° 45' 00" E			
3	3120.00	S 46° 45' 00" E			
4	1686.38	S 61° 28' 36" E			
5	334.23	N 84° 00' 00" W			
6	1025.00	N 38° 00' 00" W			
7	1525.00	N 64° 15' 00" W			
8	711.74	N 25° 55' 39" W			

Book No. 6-902

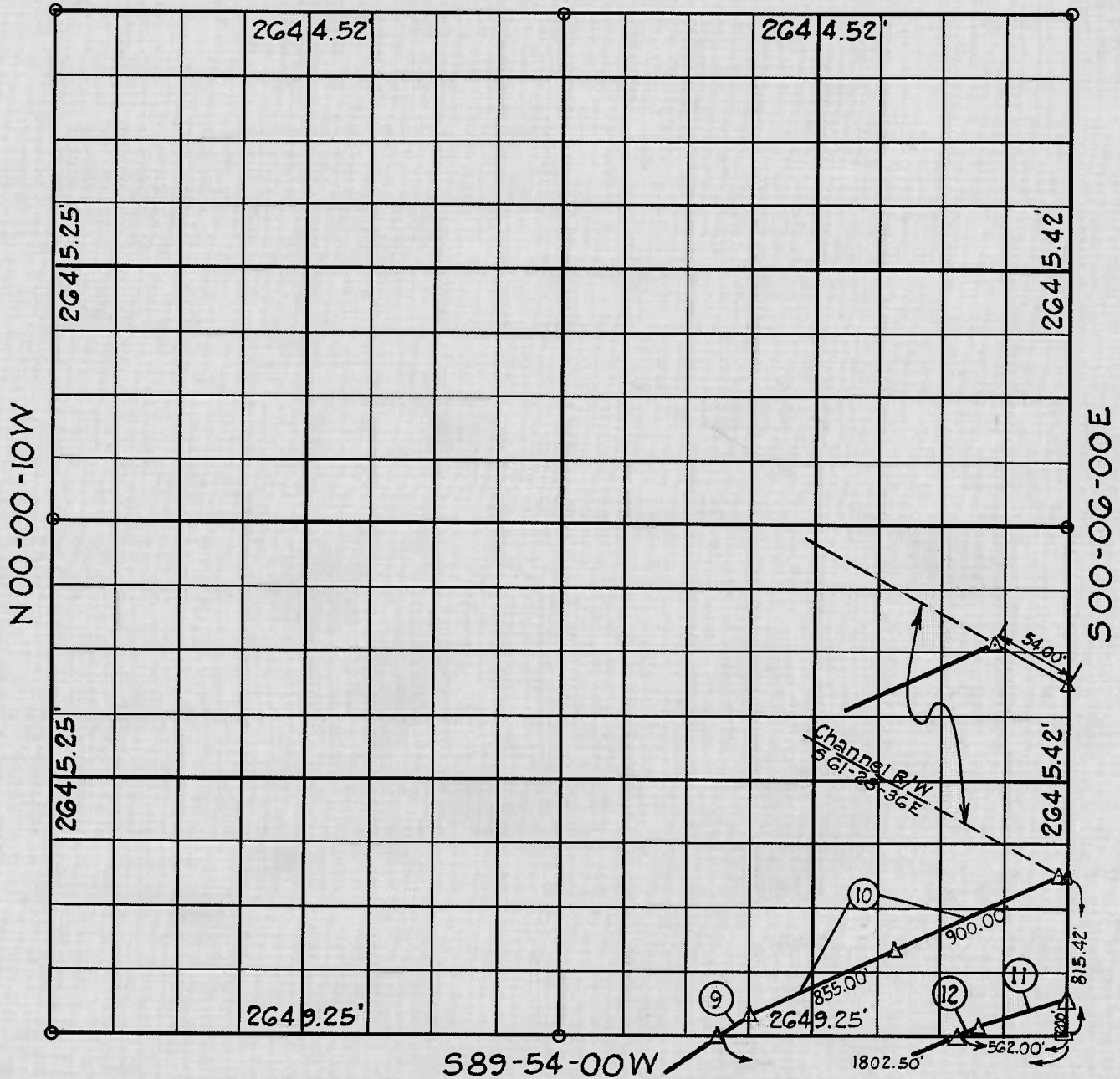
Date: November, 1966

I, Charles J. Finklea, a Registered Professional Engineer, do hereby certify that the above plat is a true and accurate survey of Sec. 23, T 16 N, R 18 E as made under my supervision.

- LEGEND**
- △ Monument
  - Original Stone
  - Iron Pin
  - ▲ Mon. by O.H.D.

*Charles J. Finklea*  
 Charles J. Finklea  
 Reg. Prof. Eng'r. No. 1063

N 89-52-45E



Course Number	Distance	Bearing	Course Number	Distance	Bearing
9	193.79	N 56° 26' 00" E			
10	1755.00	N 65° 08' 40" E			
11	490.00	S 72° 15' 00" W			
12	108.14	S 62° 03' 00" W			

Book No. 6-993 Date: July, 1968

I, Charles J. Finklea, a Registered Professional Engineer, do hereby certify that the above plat is a true and accurate survey of Sec. 23, T 16 N, R 18 E as made under my supervision.

**LEGEND**

- △ Monument
- Original Stone
- Iron Pin
- ▲ Mon. by O.H.D.

Charles J. Finklea  
Reg. Prof. Eng'r. No. 1063