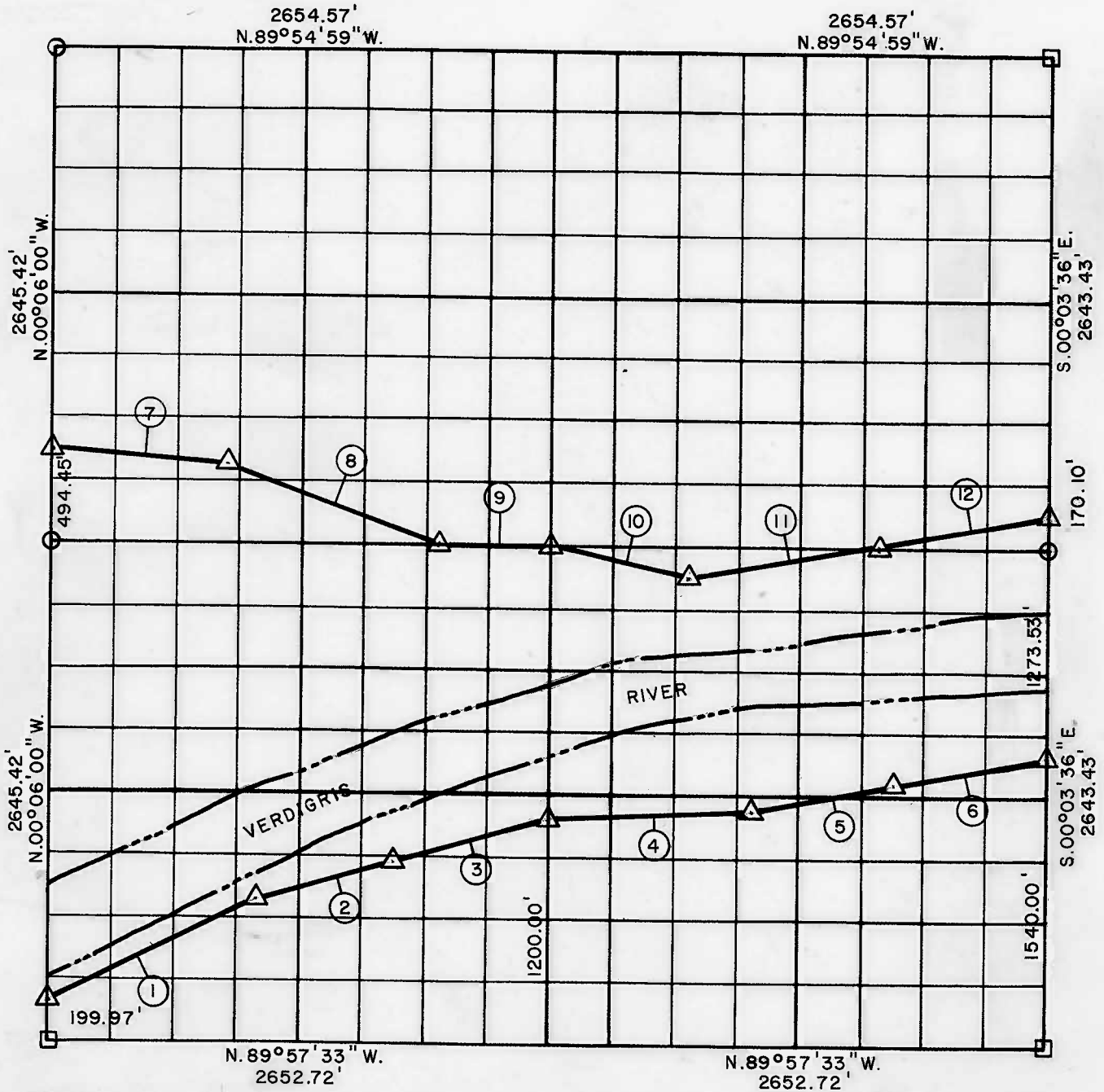


**PARTIAL BOUNDARY SURVEYS
WEBBERS FALLS LOCK & DAM NO. 16
ARKANSAS RIVER, OKLAHOMA**

Performed Under Contract Number DACW 56-68-C-0267

SEC 24 T 16 - N R 18 - E COUNTY WAGONER



Course No.	Distance	Bearing	Course No.	Distance	Bearing
1	1225.33'	N.63°14'43"E.			
2	810.00'	N.74°00'00"E.			
3	810.00'	N.74°00'00"E.			
4	1033.27'	N.86°41'50"E.			
5	822.50'	N.80°00'15"E.			
6	822.50'	N.80°00'15"E.			
7	965.14'	S.83°43'21"E.			
8	1130.00'	S.69°45'00"E.			
9	634.14'	S.89°56'16"E.			
10	730.00'	S.78°00'00"E.			
11	980.00'	N.81°45'00"E.			
12	978.76'	N.79°30'00"E.			

CERTIFICATE OF SURVEY Field Book No. A - 2936 Date: AUG. - NOV. 1968

I HEREBY CERTIFY THAT THE ABOVE PLAT IS A TRUE AND CORRECT REPRESENTATION OF THE SURVEY MADE IN SECTION 24, T 16 N, R 18 E, WAGONER COUNTY, OKLAHOMA.

E. H. Schmidt
REGISTERED PROFESSIONAL ENGINEER NO. 2518

E.H. SCHMIDT & ASSOC., INC.
Under the Supervision of
U.S. ARMY ENGINEER DISTRICT, TULSA
CORPS OF ENGINEERS
SHEET 1 of 1

LEGEND
 Δ MONUMENT
 □ ORIGINAL CORNER
 ○ IRON PIN
 * COMPUTED DISTANCE