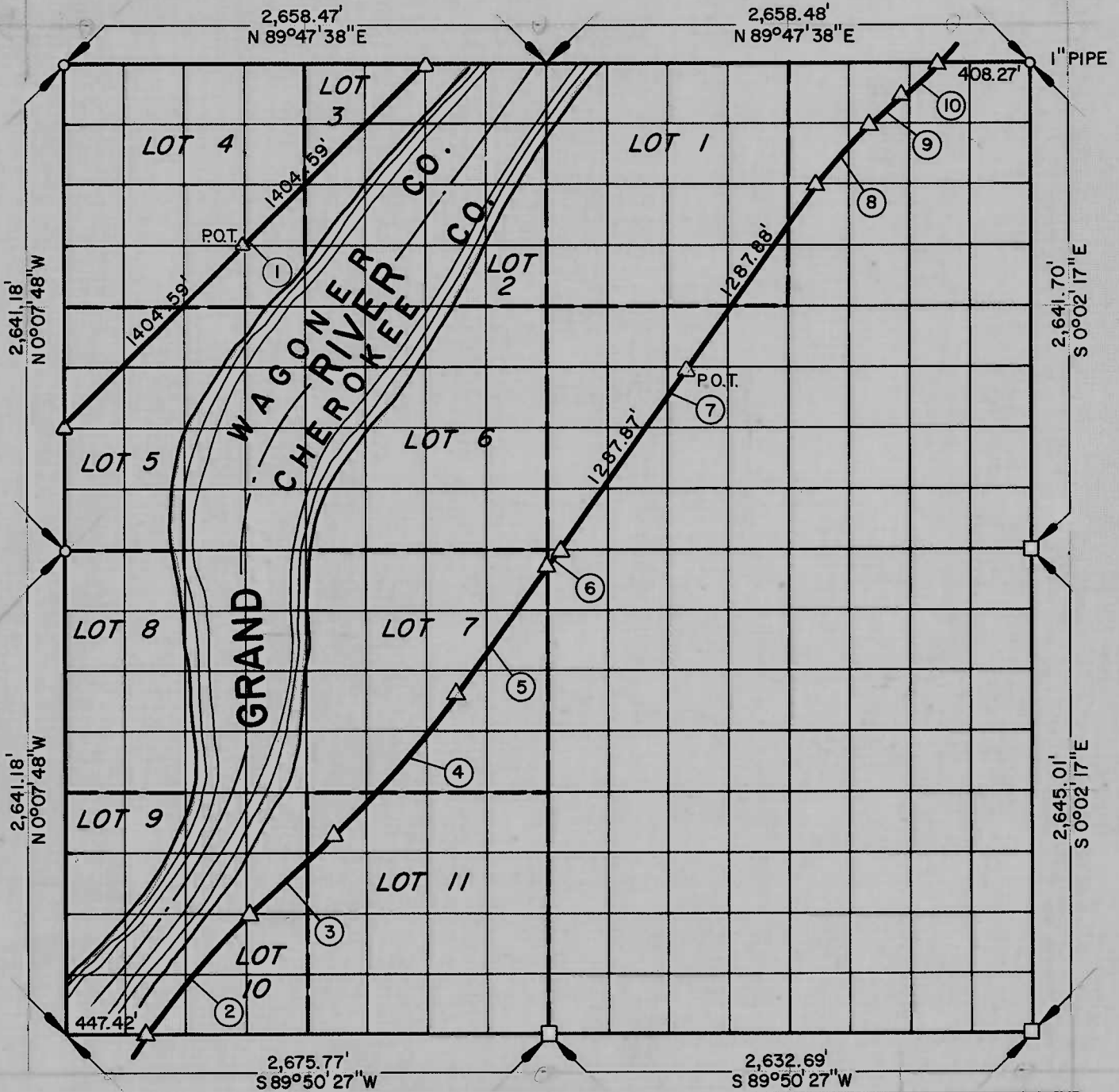


**PARTIAL BOUNDARY SURVEYS**  
**WEBBERS FALLS LOCK & DAM NO. 16**  
**ARKANSAS RIVER, OKLAHOMA**

Performed Under Contract Number DACW 56-75-C-0064

**SEC. 25      T 16 N      R 19 E      COUNTY CHEROKEE & WAGONER**



Course No.	Distance	Bearing	Course No.	Distance	Bearing		
1	2,809.17'	N 44° 57' 08" E	CURVE NO.				
2	1,133.22'	Curve No. 1	1	2	3		
3	496.07'	N 43° 51' 22" E	Δ	9° 16' 32"	5° 39' 08"	9° 38' 56"	9° 23' 21"
4	1,130.44'	Curve No. 2	D	0° 49' 06"	0° 30'	3° 00'	3° 00'
5	667.30'	N 38° 12' 14" E	R	7,000.00'	11,459.16'	1,909.86'	1,909.86'
6	48.19'	N 38° 12' 14" E	T	567.85'	565.68'	161.20'	312.97'
7	2,575.75'	N 38° 12' 14" E	L	1,133.22'	1,130.44'	321.63'	156.84'
8	321.63'	Curve No. 3	Lc	1,131.99'	1,129.99'	321.25'	312.62'
9	242.07'	N 47° 51' 10" E					
10	312.98'	Curve No. 4					

Field Book No. A-3292 , Date 6-6-75

**CERTIFICATE OF SURVEY**

I HEREBY CERTIFY THAT THE ABOVE PLAT IS A TRUE AND CORRECT REPRESENTATION OF THE SURVEY MADE IN SECTION 25, T 16 N, R 19 N, CHEROKEE & WAGONER COUNTIES, OKLAHOMA.

**K. N. COX & ASSOCIATES - ENGINEERS**

Under the Supervision of

**U.S. ARMY ENGINEER DISTRICT, TULSA  
 CORPS OF ENGINEERS**

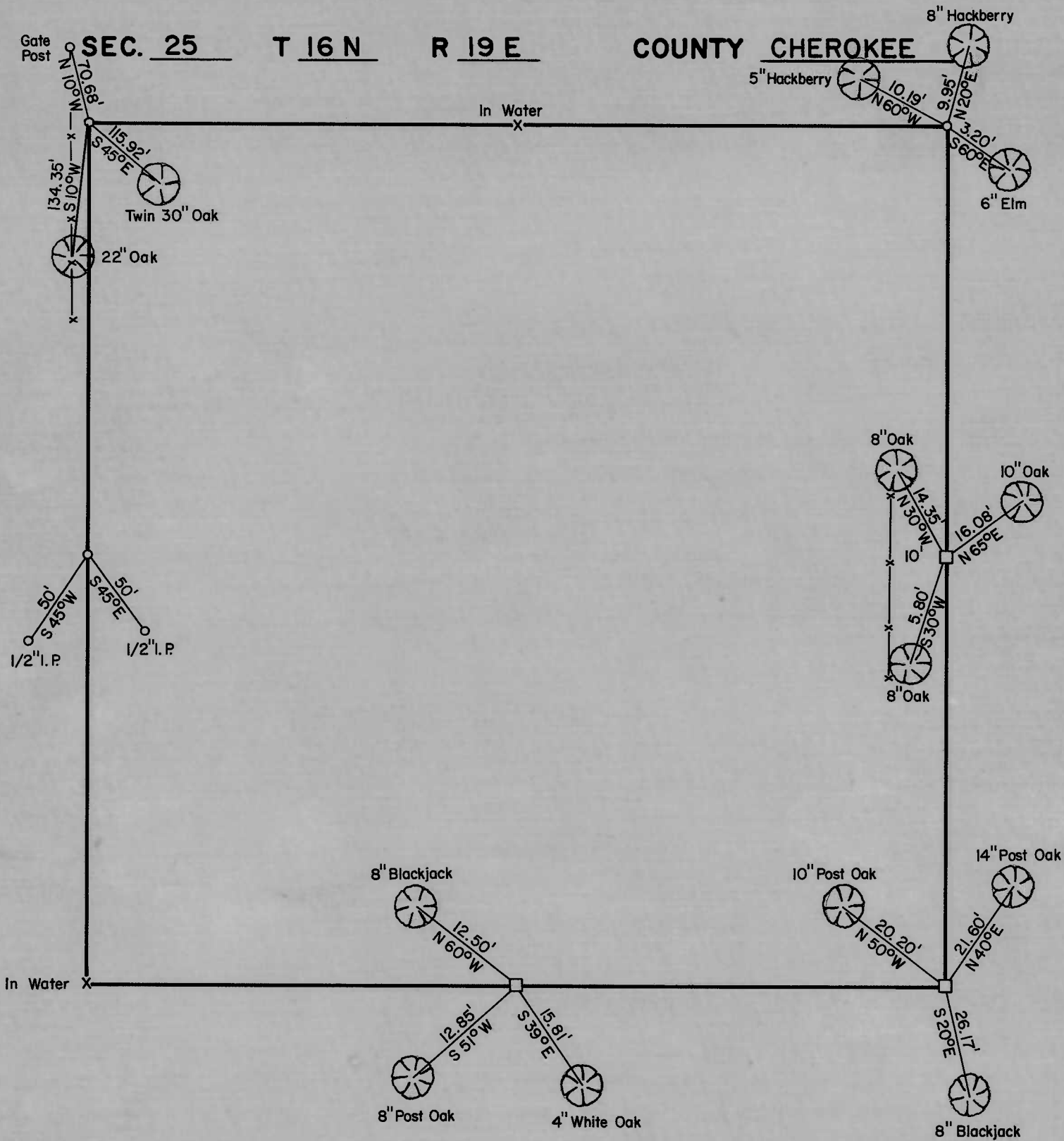
**LEGEND**

- Δ MONUMENT
- ORIGINAL CORNER
- IRON PIN

*James R. Sutton*  
 REGISTERED LAND SURVEYOR

**PARTIAL BOUNDARY SURVEYS**  
**WEBBERS FALLS LOCK & DAM NO. 16**  
**ARKANSAS RIVER, OKLAHOMA**

Performed Under Contract Number DACW 56-75-C-0064



Field Book No. A-3292 , Date 6-6-75

**K. N. COX & ASSOCIATES - ENGINEERS**

Under the Supervision of

U.S. ARMY ENGINEER DISTRICT, TULSA  
 CORPS OF ENGINEERS

SHEET 2 of 2

**LEGEND**

- △ MONUMENT
- ORIGINAL CORNER
- IRON PIN

*James Z. Sutton*