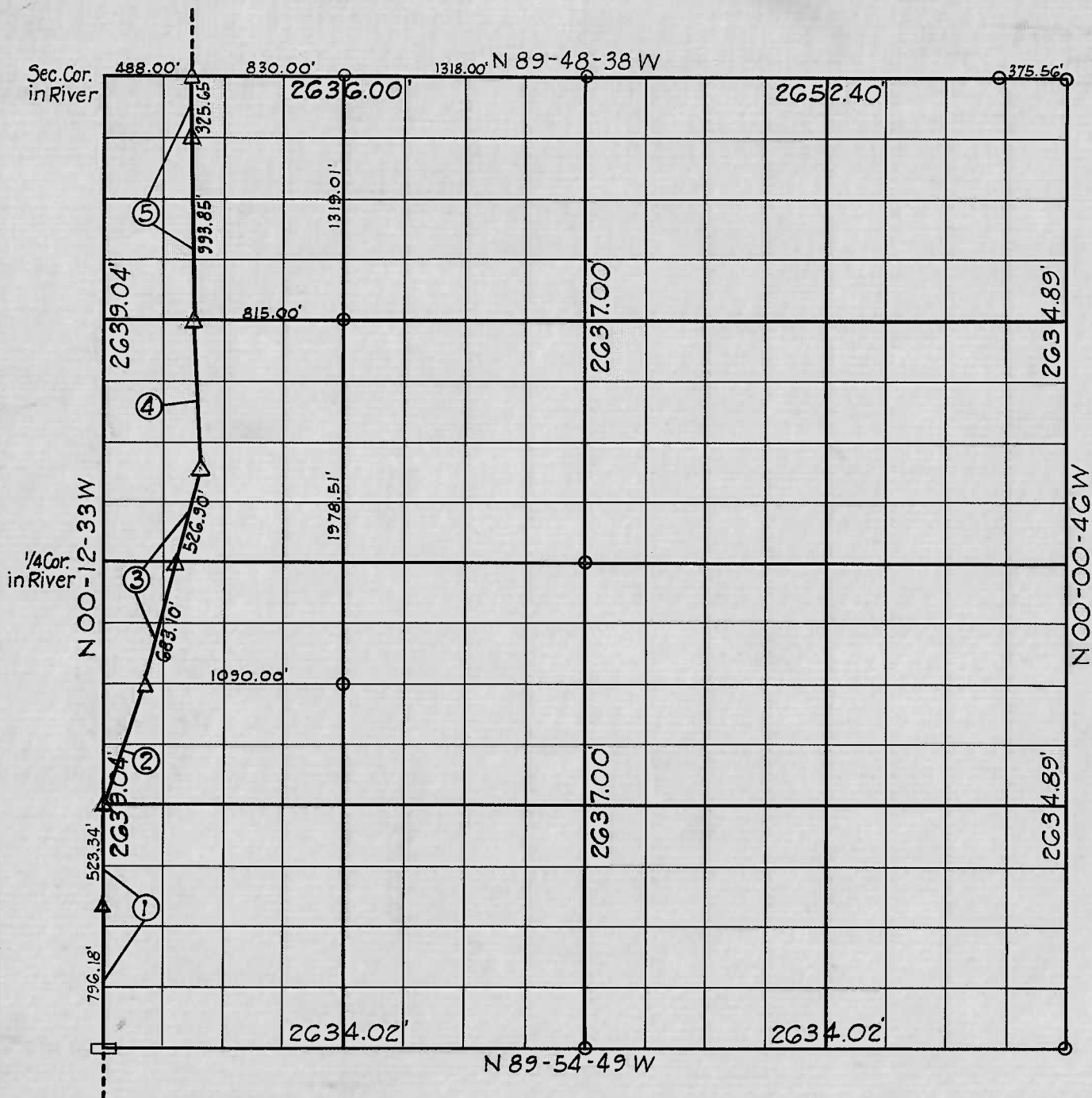


SEC. 29 T. 16 N R. 19 E COUNTY WAGONER



Course Number	Distance	Bearing	Course Number	Distance	Bearing
1	1319.52	N 0° 12' 33" W			
2	697.85	N 18° 52' 21" E			
3	1210.00	N 11° 30' 00" E			
4	806.39	N 2° 29' 00" W			
5	1319.50	N 0° 51' 24" W			

Book No. 6-958

Date: August, 1967

I, Charles J. Finklea, a Registered Professional Engineer, do hereby certify that the above plat is a true and accurate survey of Sec. 29, T16N, R19E as made under my supervision.

LEGEND

- △ Monument
- Original Stone
- Iron Pin
- ▲ Mon. by O.H.D.

Charles J. Finklea
 Charles J. Finklea
 Reg. Prof. Eng'r. No. 1063