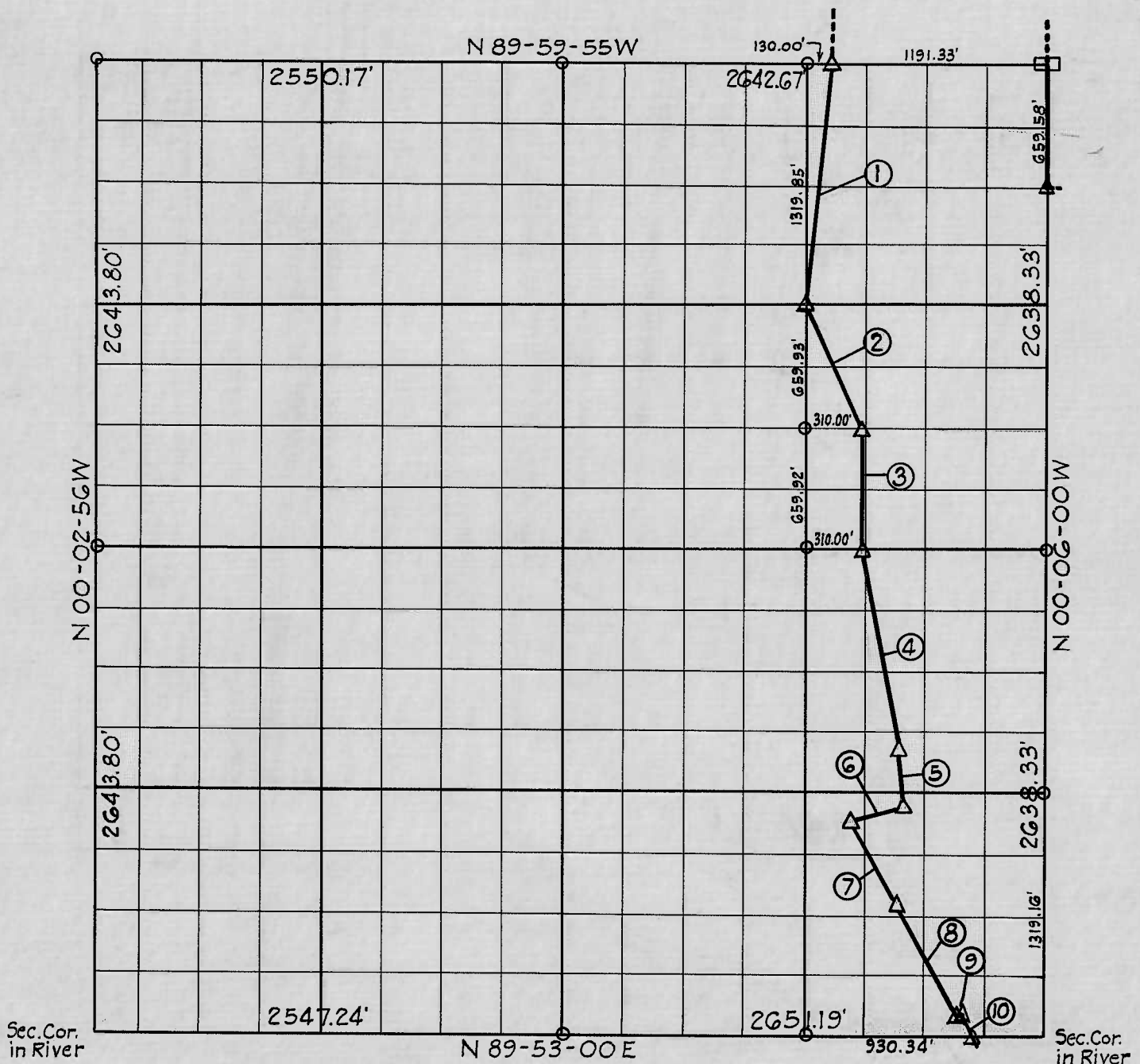


SEC. 31 T. 16N R. 19E COUNTY WAGONER



Course Number	Distance	Bearing	Course Number	Distance	Bearing
1	1326.15	S 5° 34' 21" W			
2	729.28	S 25° 12' 48" E			
3	659.90	S 0° 03' 13" E			
4	1096.90	S 11° 22' 48" E			
5	330.00	S 6° 30' 00" E			
6	305.00	S 76° 30' 00" W			
7	L=515.00	R = 9749.30			
8	L=685.00	R = 9749.30			
9	25.00	N 64° 23' 08" E			
10	L=140.59	R = 9774.30			

Book No. 6-960

Date: August, 1967

I, Charles J. Finklea, a Registered Professional Engineer, do hereby certify that the above plat is a true and accurate survey of Sec. 31, T 16 N, R 19 E as made under my supervision.

LEGEND

- △ Monument
- Original Stone
- Iron Pin
- ▲ Mon. by O.H.D.

*Charles J. Finklea*  
 Charles J. Finklea  
 Reg. Prof. Eng'r. No. 1063