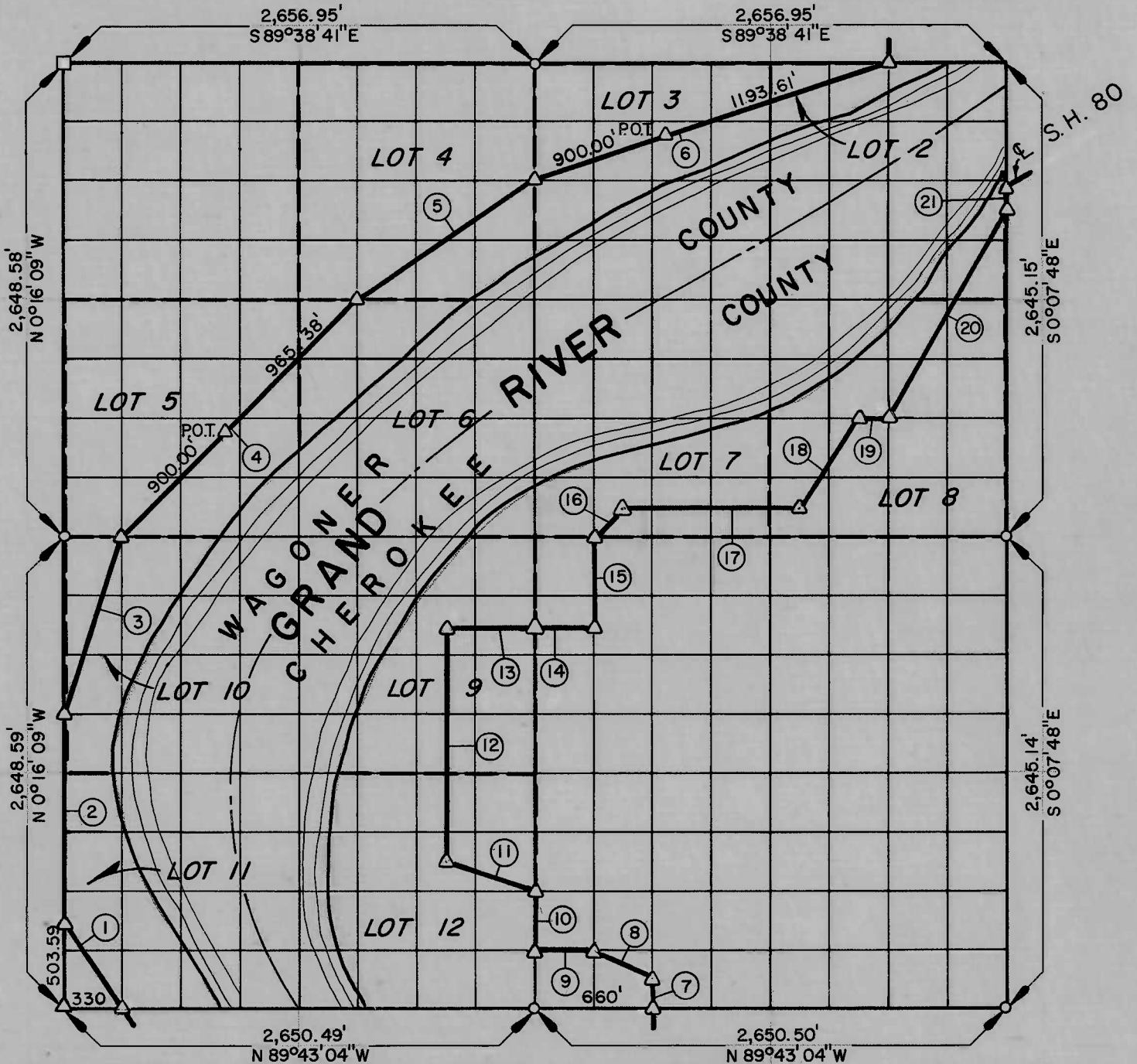


PARTIAL BOUNDARY SURVEYS
WEBBERS FALLS LOCK & DAM NO. 16
ARKANSAS RIVER, OKLAHOMA

Performed Under Contract Number DACW 56-75-C-0064

SEC. 35 T 16 N R 19 E COUNTY CHEROKEE & WAGONER



Course No.	Distance	Bearing	Course No.	Distance	Bearing
1	604.74'	N 33°20' 22" W	14	330.00'	S 89°40' 52" E
2	1,155.00'	N 0°16' 09" W	15	495.00'	N 0°11' 58" W
3	1,040.33'	N 18°13' 26" E	16	237.24'	N 46°15' 11" E
4	1,865.38'	N 45°06' 55" E	17	990.00'	S 89°40' 52" E
5	1,191.79'	N 56°36' 45" E	18	596.62'	N 34°15' 20" E
6	2,093.61'	N 71°55' 52" E	19	165.00'	S 89°40' 52" E
7	165.00'	N 0°11' 58" W	20	1,328.02'	N 29°40' 12" E
8	371.76'	N 62°46' 42" W	21	103.53'	N 0°07' 48" W
9	330.00'	N 89°43' 04" W			
10	330.00'	N 0°11' 58" W			
11	524.31'	N 70°56' 38" W			
12	1,320.00'	N 0°11' 58" W			
13	495.00'	S 89°40' 52" E			

Field Book No. A-3295 , Date 6-6-75

CERTIFICATE OF SURVEY

HEREBY CERTIFY THAT THE ABOVE PLAT IS A TRUE AND CORRECT REPRESENTATION OF THE SURVEY MADE IN SECTION

35 , T 16 N , R 19 E , CHEROKEE & WAGONER COUNTIES, OKLAHOMA.

James R. Sutton
 REGISTERED LAND SURVEYOR

K. N. COX & ASSOCIATES - ENGINEERS

Under the Supervision of

**U.S. ARMY ENGINEER DISTRICT, TULSA
 CORPS OF ENGINEERS**

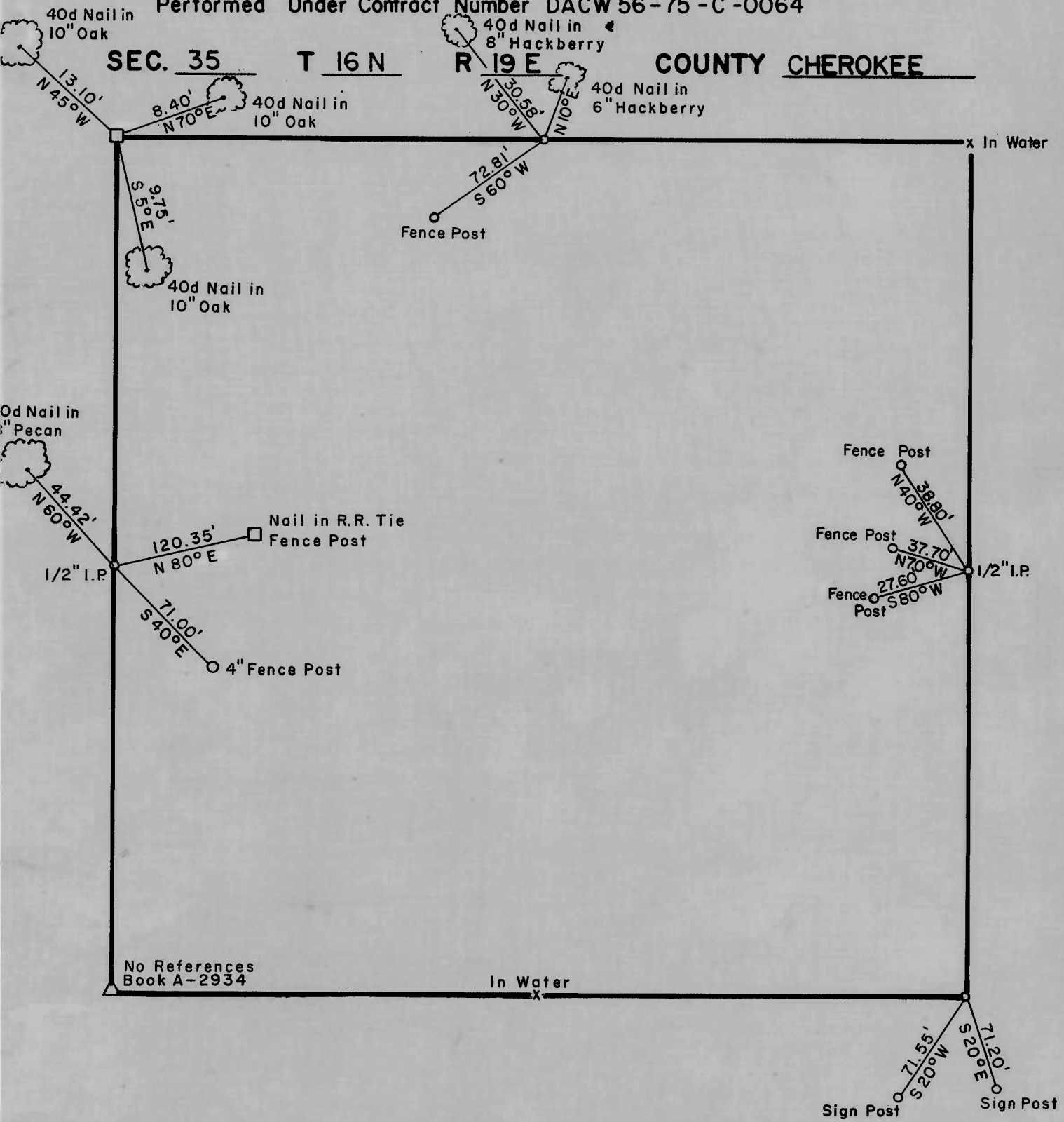
SHEET 1 of 2

LEGEND

- △ MONUMENT
- ORIGINAL CORNER
- IRON PIN

PARTIAL BOUNDARY SURVEYS
WEBBERS FALLS LOCK & DAM NO. 16
ARKANSAS RIVER, OKLAHOMA

Performed Under Contract Number DACW 56-75-C-0064



Field Book No. A-3295, Date 7-17-75

K. N. COX & ASSOCIATES - ENGINEERS

Under the Supervision of

U.S. ARMY ENGINEER DISTRICT, TULSA
CORPS OF ENGINEERS

SHEET 2 of 2

LEGEND

- △ MONUMENT
- ORIGINAL CORNER
- IRON PIN