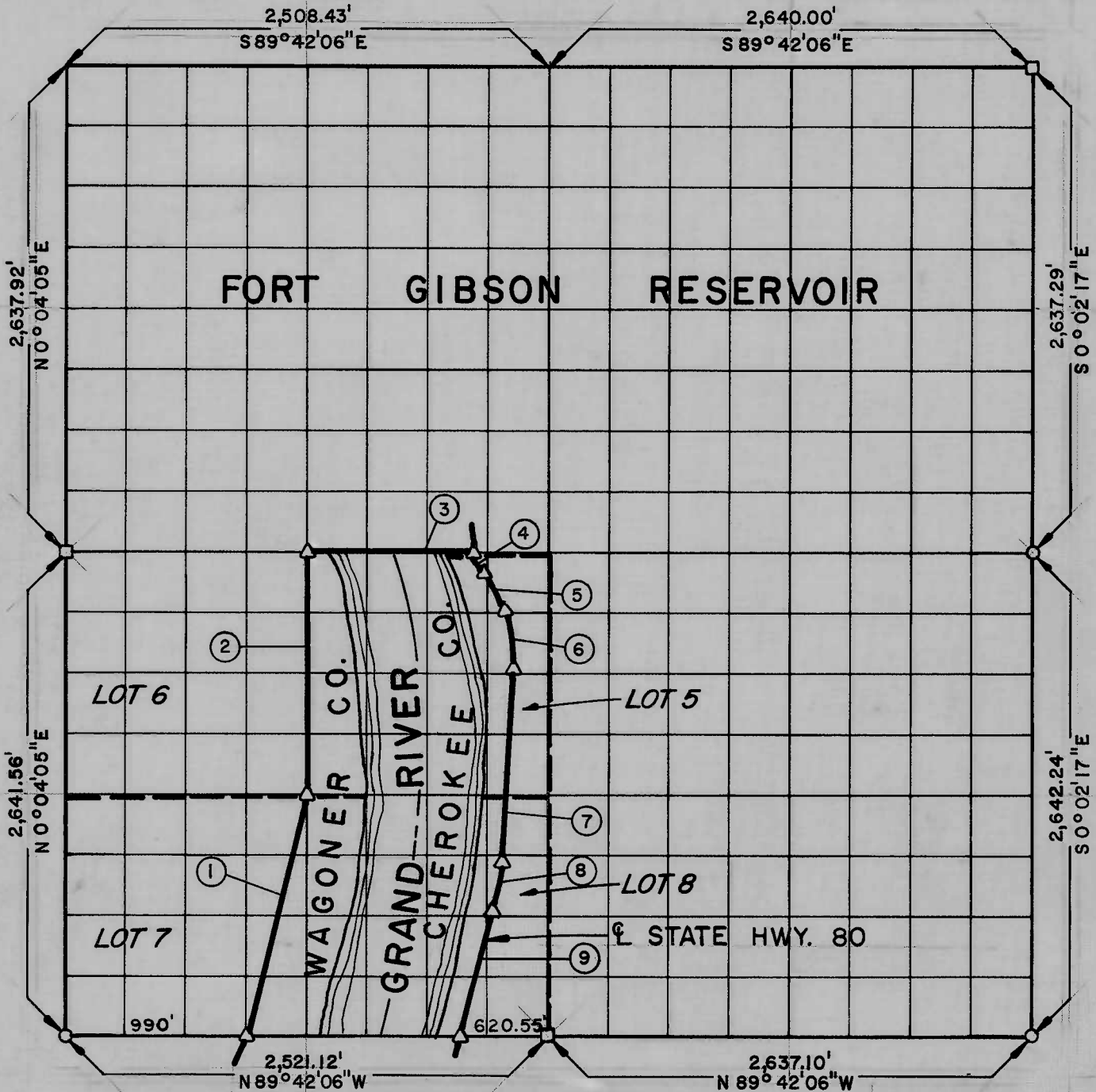


PARTIAL BOUNDARY SURVEYS
WEBBERS FALLS LOCK & DAM NO. 16
ARKANSAS RIVER, OKLAHOMA

Performed Under Contract Number DACW 56-75-C-0064

SEC. 18 T 16N R 20E COUNTY WAGONER & CHEROKEE



Course No.	Distance	Bearing	Curve No.	Distance	Bearing
1	1,360.18'	N14°06'32"E	Curve No. 1	Curve No. 2	Curve No. 3
2	1,320.86'	N 0°04'05"E	Δ=1°42'38"	Δ=10°06'49"	Δ=11°58'36"
3	963.89'	S89°42'32"E	D=3°00'	D=4°00'	D=4°00'
4	57.02'	Curve No. 1	R=1,909.86'	R=1,432.39'	R=1,432.39'
5	283.92'	S 4°01'12"E	T=28.51'	T=126.75'	T=150.26'
6	252.84'	Curve No. 2	L=57.02'	L=252.84'	L=299.42'
7	1,054.74'	S 6°05'37"W	Lc=57.02'	Lc=252.51'	Lc=298.87'
8	299.42'	Curve No. 3			
9	742.83'	S18°04'13"W			

Field Book No. A-3290, Date 6-6-75

CERTIFICATE OF SURVEY

WE HEREBY CERTIFY THAT THE ABOVE PLAT IS A TRUE AND CORRECT REPRESENTATION OF THE SURVEY MADE IN SECTION 18, T 16N, R 20E, WAGONER & CHEROKEE COUNTIES, OKLAHOMA.

K.N. COX & ASSOCIATES - ENGINEERS

Under the Supervision of

**U.S. ARMY ENGINEER DISTRICT, TULSA
 CORPS OF ENGINEERS**

LEGEND

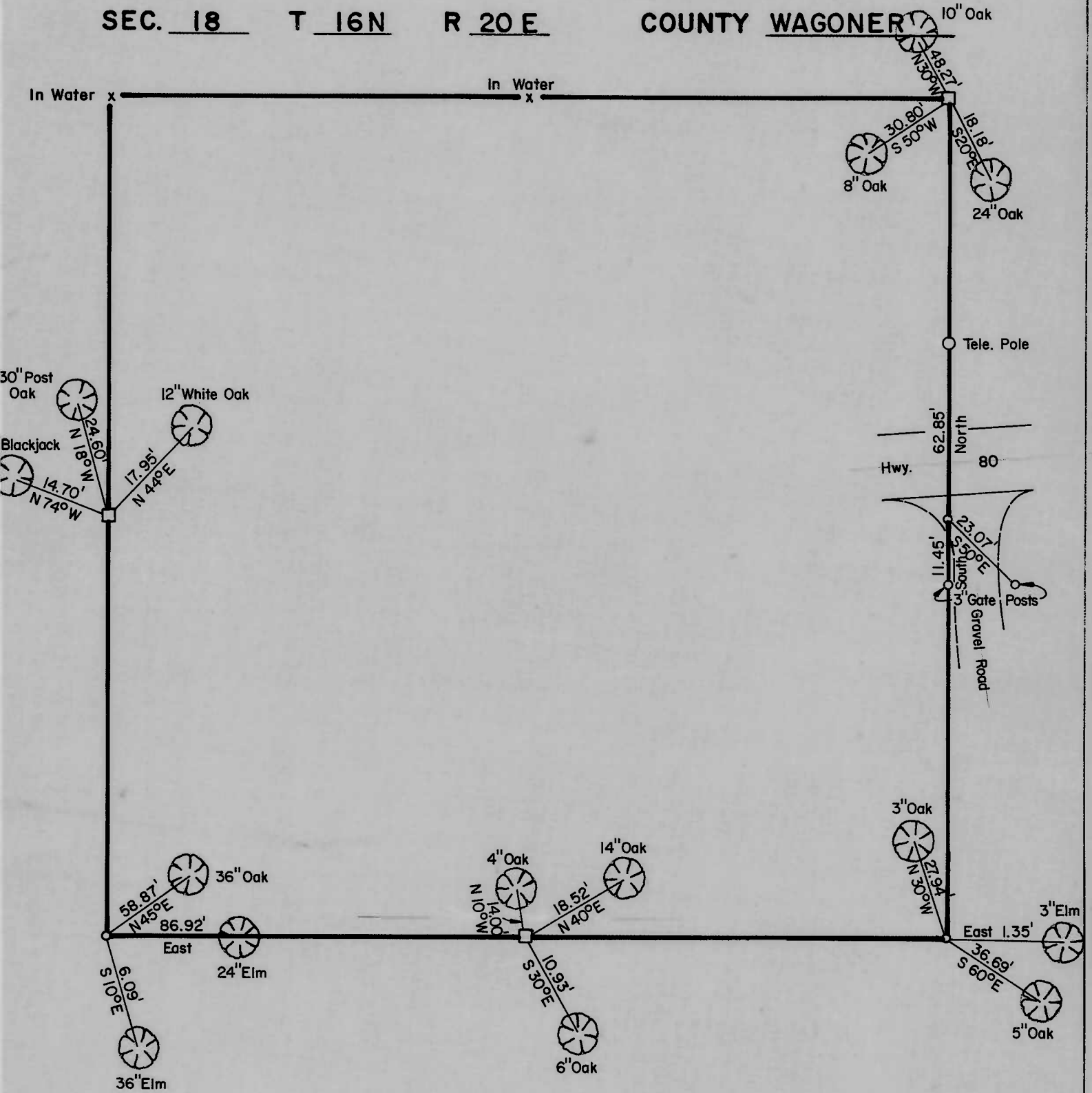
- △ MONUMENT
- ORIGINAL CORNER
- IRON PIN

Dave P. Sultan
 REGISTERED LAND SURVEYOR

PARTIAL BOUNDARY SURVEYS
WEBBERS FALLS LOCK & DAM NO. 16
ARKANSAS RIVER, OKLAHOMA

Performed Under Contract Number DACW 56-75-C-0064

SEC. 18 T 16N R 20E COUNTY WAGONER



Field Book No. A-3290 , Date 6-6-75

K.N. COX & ASSOCIATES - ENGINEERS

Under the Supervision of

U.S. ARMY ENGINEER DISTRICT, TULSA
CORPS OF ENGINEERS

SHEET 2 of 2

LEGEND

- △ MONUMENT
- ORIGINAL CORNER
- IRON PIN

James R. Suttan