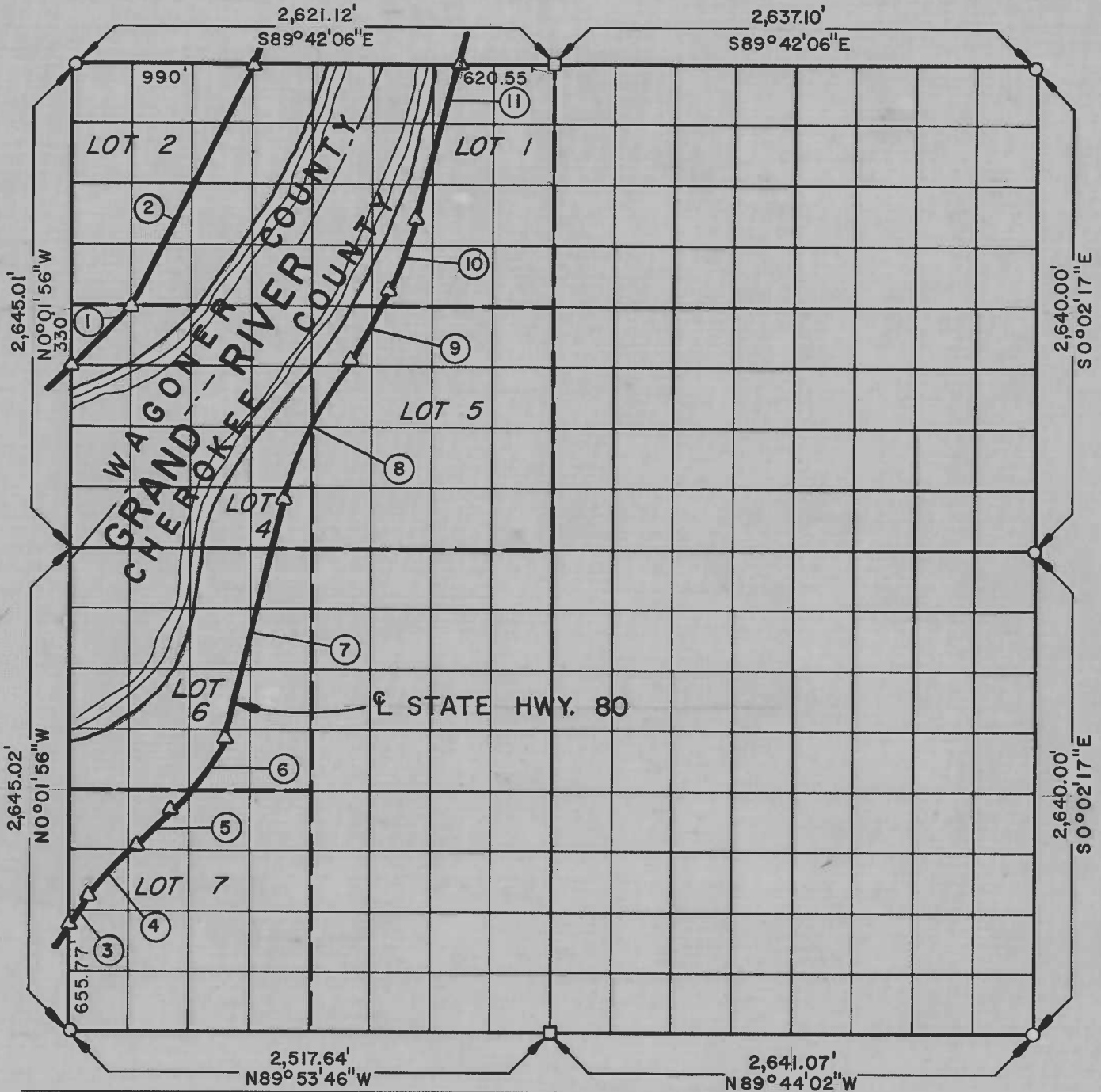


**PARTIAL BOUNDARY SURVEYS**  
**WEBBERS FALLS LOCK & DAM NO. 16**  
**ARKANSAS RIVER, OKLAHOMA**

Performed Under Contract Number DACW 56 -75 -C -0064

**SEC. 19      T 16 N      R 20 E      COUNTY CHEROKEE & WAGONER**



Course No.	Distance	Bearing
1	465.46'	N 45° 07' 09" E
2	1,474.49'	N 26° 33' 27" E
3	46.04'	N 30° 26' 25" E
4	451.51'	Curve No. 1
5	295.69'	N 43° 59' 08" E
6	551.29'	Curve No. 2
7	1,159.17'	N 10° 54' 30" E
8	827.60'	Curve No. 3
9	472.67'	N 27° 27' 37" E
10	443.14'	Curve No. 4
11	830.09'	N 18° 35' 51" E

Curve No.	CURVE NO.			
	1	2	3	4
Δ	13° 32' 43"	33° 04' 38"	16° 33' 07"	8° 51' 46"
D	3° 00'	6° 00'	2° 00'	2° 00'
R	1,909.86'	954.93'	2,864.79'	2,864.79'
T	226.81'	283.56'	416.70'	222.01'
L	451.51'	551.29'	827.60'	443.14'
Lc	450.46'	543.66'	824.72'	442.70'

Field Book No. A-3291 , Date 6-6-75

**CERTIFICATE OF SURVEY**

HEREBY CERTIFY THAT THE ABOVE PLAT IS A TRUE AND CORRECT REPRESENTATION OF THE SURVEY MADE IN SECTION 19, T 16 N, R 19 E, CHEROKEE & WAGONER COUNTIES, OKLAHOMA.

*David R. Sittler*  
 REGISTERED LAND SURVEYOR

**K. N. COX & ASSOCIATES - ENGINEERS**

Under the Supervision of

**U.S. ARMY ENGINEER DISTRICT, TULSA  
 CORPS OF ENGINEERS**

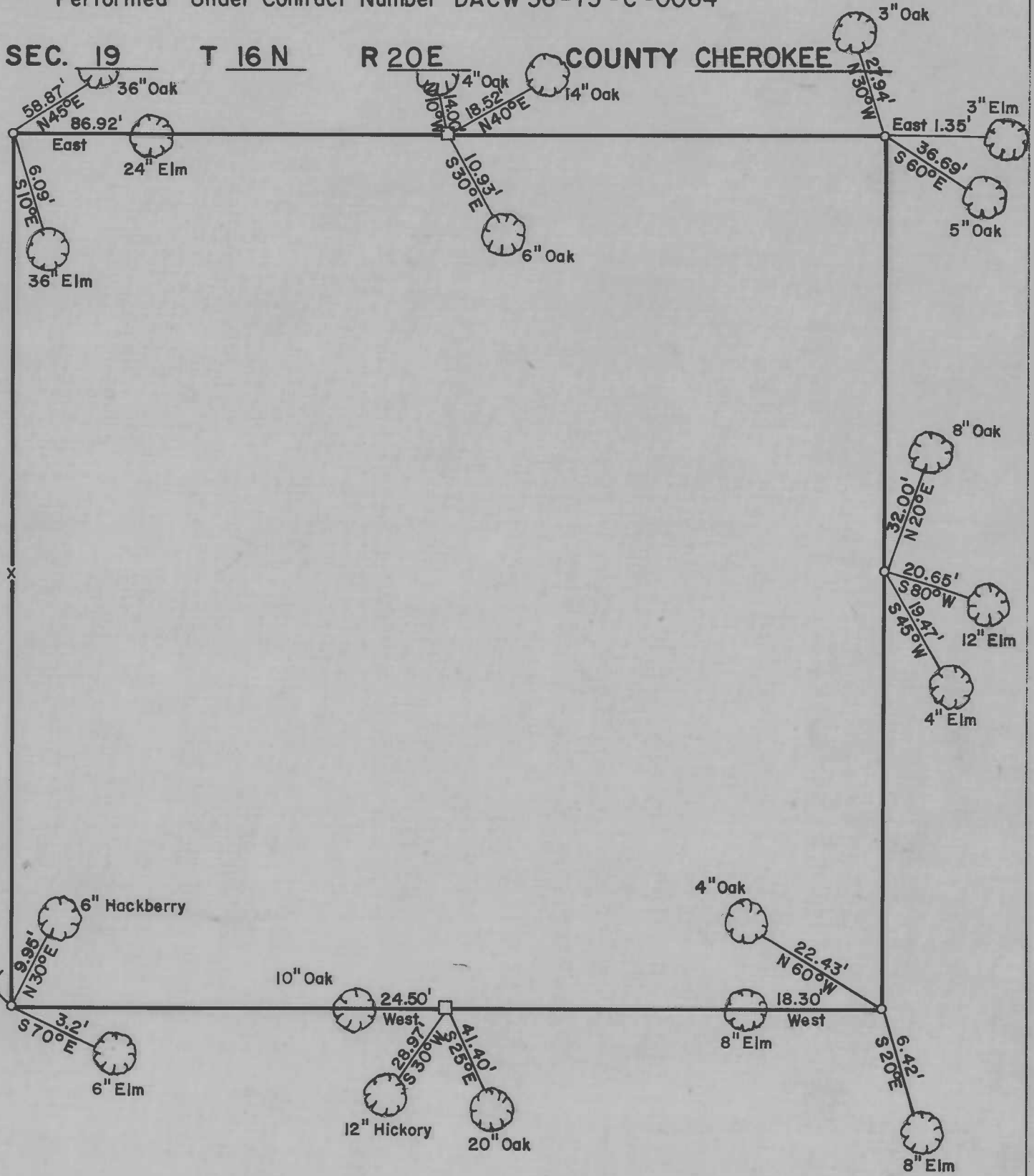
SHEET 1 of 2

**LEGEND**

- Δ MONUMENT
- ORIGINAL CORNER
- IRON PIN

**PARTIAL BOUNDARY SURVEYS**  
**WEBBERS FALLS LOCK & DAM NO. 16**  
**ARKANSAS RIVER, OKLAHOMA**

Performed Under Contract Number DACW 56-75-C-0064



Field Book No. A-3291 , Date 6-6-75

K.N. COX & ASSOCIATES - ENGINEERS

Under the Supervision of

U.S. ARMY ENGINEER DISTRICT, TULSA  
 CORPS OF ENGINEERS

LEGEND

- △ MONUMENT
- ORIGINAL CORNER
- IRON PIN

*James R. Supter*