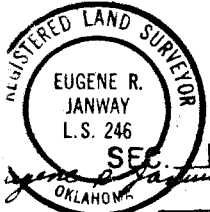


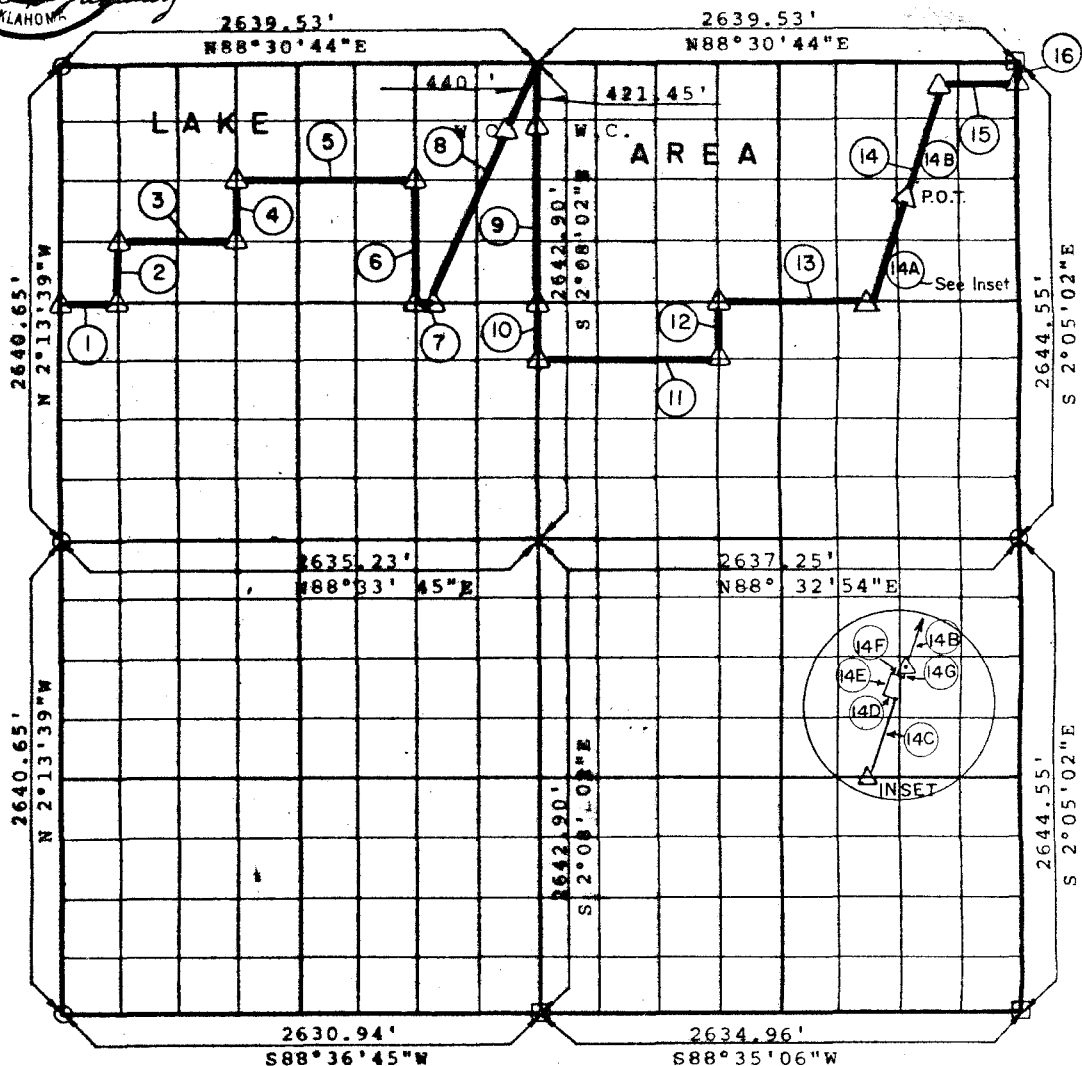
PARTIAL BOUNDARY SURVEYS
WISTER E
POTEAU RIVER, OKLAHOMA

BOOK 747 PAGE 81
BY D. D. BALLEGAARD COUNTY CLERK
AKV DEPUTY



Performed Under Contract Number DACW56-72-C-0122

SEC 13 T 4 N R 25 E COUNTY LE FLORE



Course No.	Distance	Bearing
1	329.67	N88°32'14"E
2	330.12	N 2°12'57"W
3	659.48	N88°31'51"E
4	330.19	N 2°11'33"W
5	989.42	N88°31'29"E
6	660.59	S 2°09'26"E
7	79.00	N88°32'14"E
8	1437.04	N21°41'00"E
9	1321.45	S 2°08'02"E
10	330.36	S 2°08'02"E
11	989.29	N88°32'07"E
12	330.44	N 2°06'55"W
13	814.99	N88°31'50"E
14	1259.69	N13°18'11"E
15	500.00	N88°30'44"E
16	105.00	N 2°05'02"W

Course No.	Distance	Bearing
14A	616.29	N13°18'11"E
14B	642.14	N13°18'11"E
1981 FIELD MEASUREMENTS		
14C	465.29	N13°18'11"E
14D	65.00	N76°41'49"W
14E	100.00	N13°18'11"E
14F	65.00	S76°41'49"E
14G	50.00	N13°18'11"E
1985 C & G FIELD MEASUREMENTS		

CERTIFICATE OF SURVEY Field Book No. 1-203 Date Aug 31, 1972 BOOK 747 PAGE 81

HEREBY CERTIFY THAT THE ABOVE PLAT IS A TRUE AND CORRECT REPRESENTATION OF THE SURVEY MADE IN SECTION 13, T. 4 N., R. 25 E., LE FLORE COUNTY, OKLAHOMA.

BEAVERS & BRAWLEY, INC.
CONSULTING ENGINEERS
Under the Supervision of

LEGEND
 Δ MONUMENT
 □ ORIGINAL CORNER
 ○ IRON PIN

U.S. ARMY ENGINEER DISTRICT, TULSA
CORPS OF ENGINEERS

Eugene R. Janway
REGISTERED L. S. NO. 393