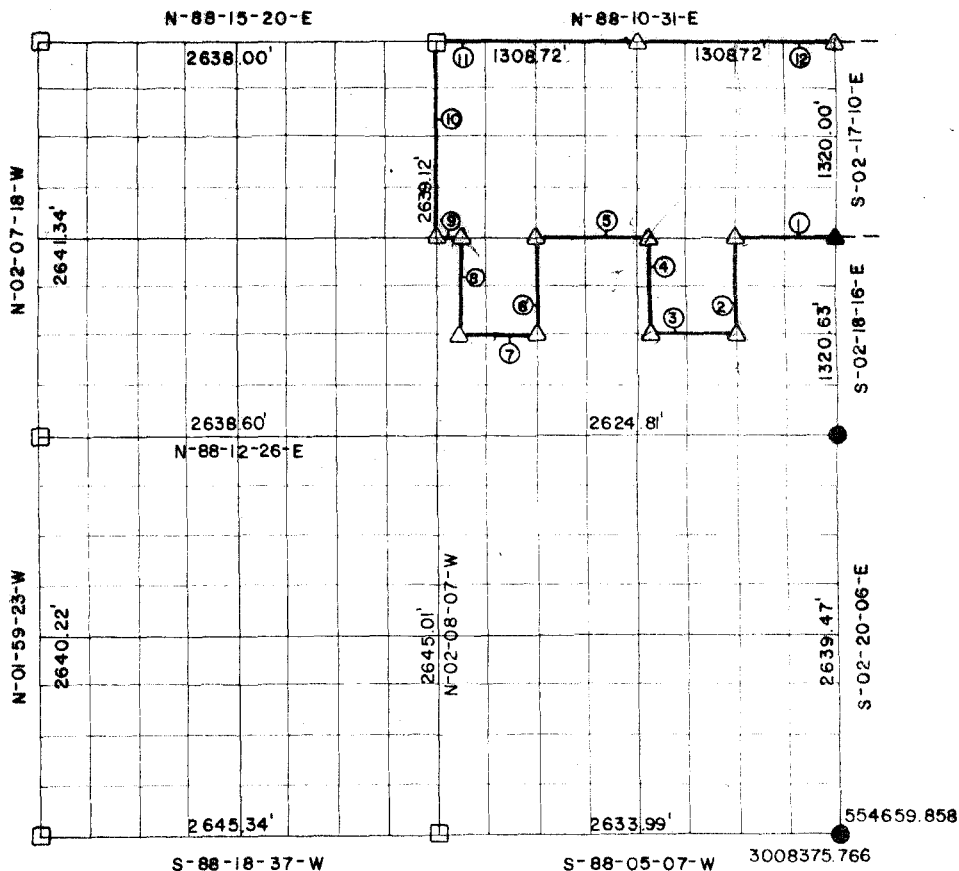


# RECORD BOUNDARY PLAT WISTER LAKE POTEAU RIVER OKLAHOMA

GN TN  
01-54-07.665

SEC. 14      T 4N      R 25E      LE FLORE COUNTY



NOTE: ALL BEARINGS AND DISTANCE ARE GRID

Course No.	Distance	Bearing	Course No.	Distance	Bearing
1	655.18'	S-88-11-04-W			
2	660.18'	S-02-15-35-E			
3	558.69'	S-88-12-21-W			
4	661.64'	N-02-21-11-E			
5	804.95'	S-88-11-43-W			
6	659.91'	S-02-10-31-E			
7	491.81'	S-88-11-45-W			
8	659.81'	N-02-09-19-W			
9	163.82'	S-88-11-04-W			
10	1319.56'	N-02-08-07-W			
11	1308.72'	N-88-10-31-E			
12	1308.72'	N-88-10-31-E			

CERTIFICATE OF SURVEY    Field Book No. J-233    Date SEP. 1977

I HEREBY CERTIFY THAT THE ABOVE  
PLAT IS A TRUE AND CORRECT  
REPRESENTATION OF THE SURVEY  
OF THE ABOVE SECTION

*Bobby L. Curtis*  
REGISTERED LAND SURVEYOR NO. 803

CURTIS & GUINN SURVEYING  
STONEWALL, OKLA.

Under the Supervision of  
U.S. ARMY CORPS OF ENGINEERS  
TULSA DISTRICT, OKLAHOMA

SHEET 1 of 2

LEGEND

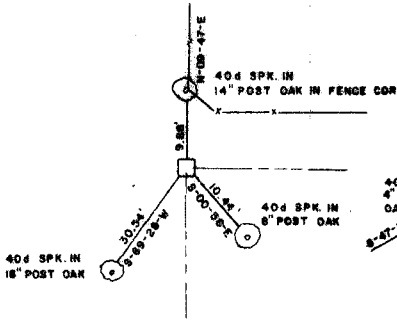
- △ — MONUMENT SET
- ▲ — MONUMENT FOUND
- — ORIGINAL CORNER
- — IRON PIN FOUND
- — IRON PIN SET

# WISTER LAKE POTEAU RIVER OKLAHOMA

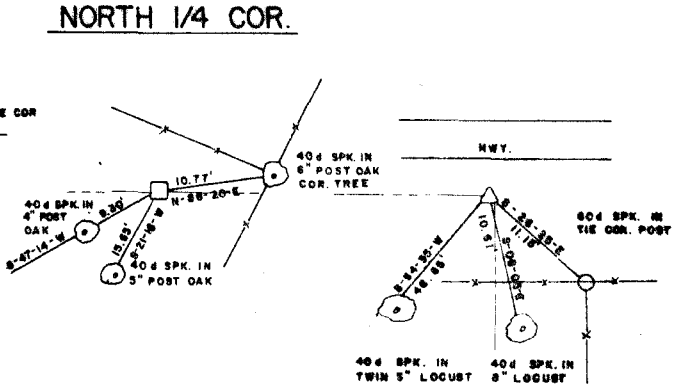
SECTION AND QUARTER SECTION CORNER  
REFERENCES FOR

SEC. 14 T.4N., R.25E., 1 M., COUNTY-LE FLORE

N.W. CORNER

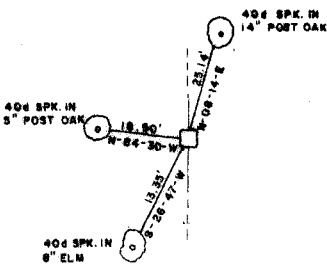


N.E. CORNER

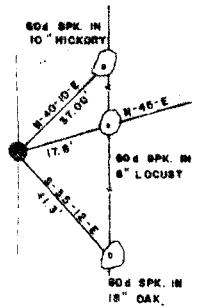


NORTH 1/4 COR.

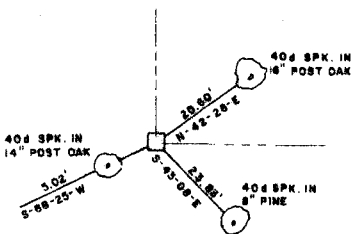
WEST 1/4 COR.



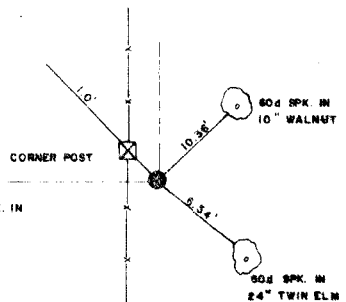
EAST 1/4 COR.



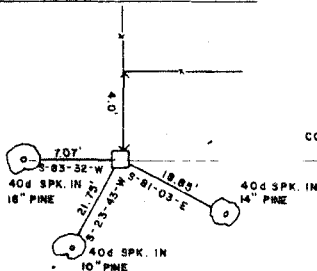
S.W. CORNER



S.E. CORNER



SOUTH 1/4 COR.



Field Book No. I-233 Date SEP. 1977

**LEGEND**

- ▲ — MONUMENT FOUND
- △ — MONUMENT SET
- — ORIGINAL CORNER
- — IRON PIN FOUND
- — IRON PIN SET

CURTIS & GUINN SURVEYING  
STONEWALL, OKLA.

*Billy L. Curtis*  
REGISTERED LAND SURVEYOR NO. 403

Under the Supervision of  
U.S. ARMY CORPS OF ENGINEERS  
TULSA DISTRICT, OKLAHOMA