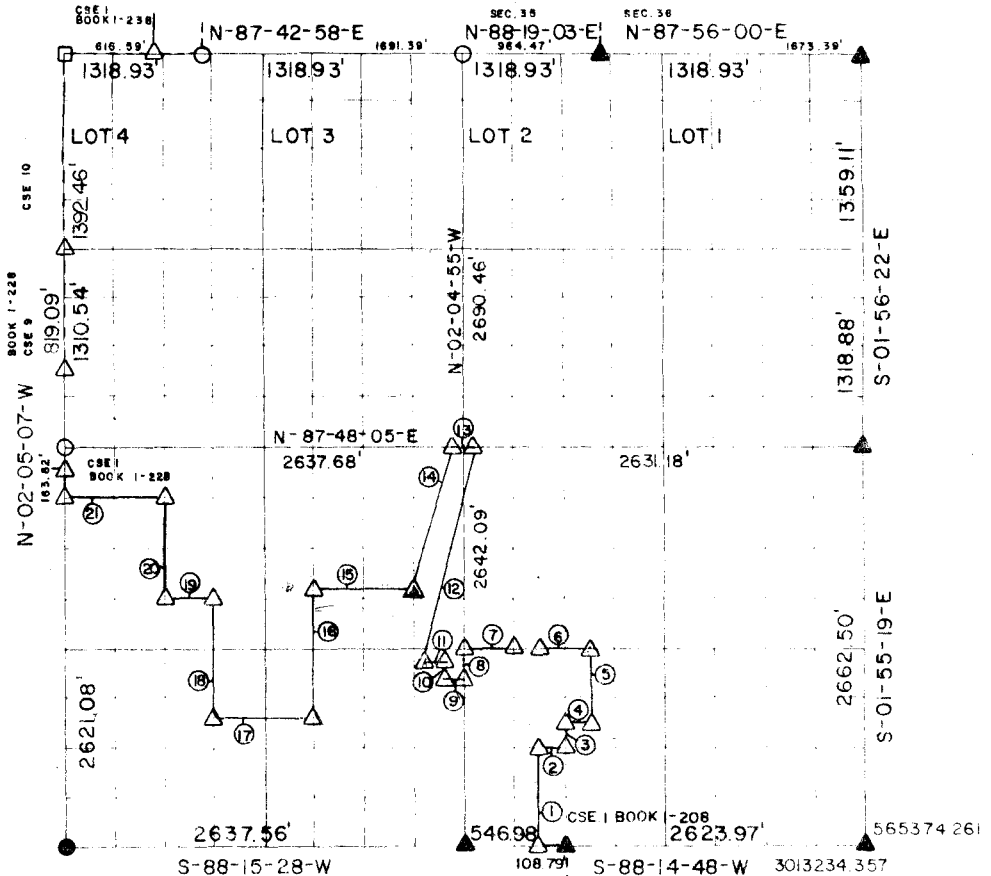


RECORD BOUNDARY PLAT WISTER LAKE POTEAU RIVER OKLAHOMA

01-54-43.243

SEC. 1 T 4N R 25E LE FLORE COUNTY



NOTE: ALL BEARINGS AND DISTANCE ARE GRID

Course No.	Distance	Bearing	Course No.	Distance	Bearing
1	620.00'	N-02-01-59-W	14	879.26'	S-08-56-06-W
2	150.00'	N-88-08-07-E	15	680.65'	S-88-01-47-W
3	200.00'	N-02-01-59-W	16	770.03'	S-02-05-01-E
4	50.00'	N-88-08-07-E	17	680.67'	S-73-21-17-W
5	507.00'	N-04-42-01-E	18	729.16'	N-02-05-01-W
6	289.79'	S-88-01-24-W	19	330.00'	S-88-01-47-W
7	321.00'	S-88-01-25-W	20	660.00'	N-02-05-08-W
8	99.00'	S-02-04-55-W	21	660.00'	S-87-48-05-W
9	118.50'	S-88-01-47-W			
10	41.70'	N-02-04-55-E			
11	122.71'	S-88-01-47-W			
12	1403.64'	N-08-56-06-E			
13	163.00'	S-87-48-05-W			

Incorrect

CERTIFICATE OF SURVEY Field Book No. J-227 Date SEP. 1977

I HEREBY CERTIFY THAT THE ABOVE
PLAT IS A TRUE AND CORRECT
REPRESENTATION OF THE SURVEY
OF THE ABOVE SECTION

CURTIS & GUINN SURVEYING
STONEWALL, OKLA.

LEGEND

- ▲ — MONUMENT SET
- ▲ — MONUMENT FOUND
- — ORIGINAL CORNER
- — IRON PIN FOUND
- — IRON PIN SET

Under the Supervision of
U.S. ARMY CORPS OF ENGINEERS
TULSA DISTRICT, OKLAHOMA

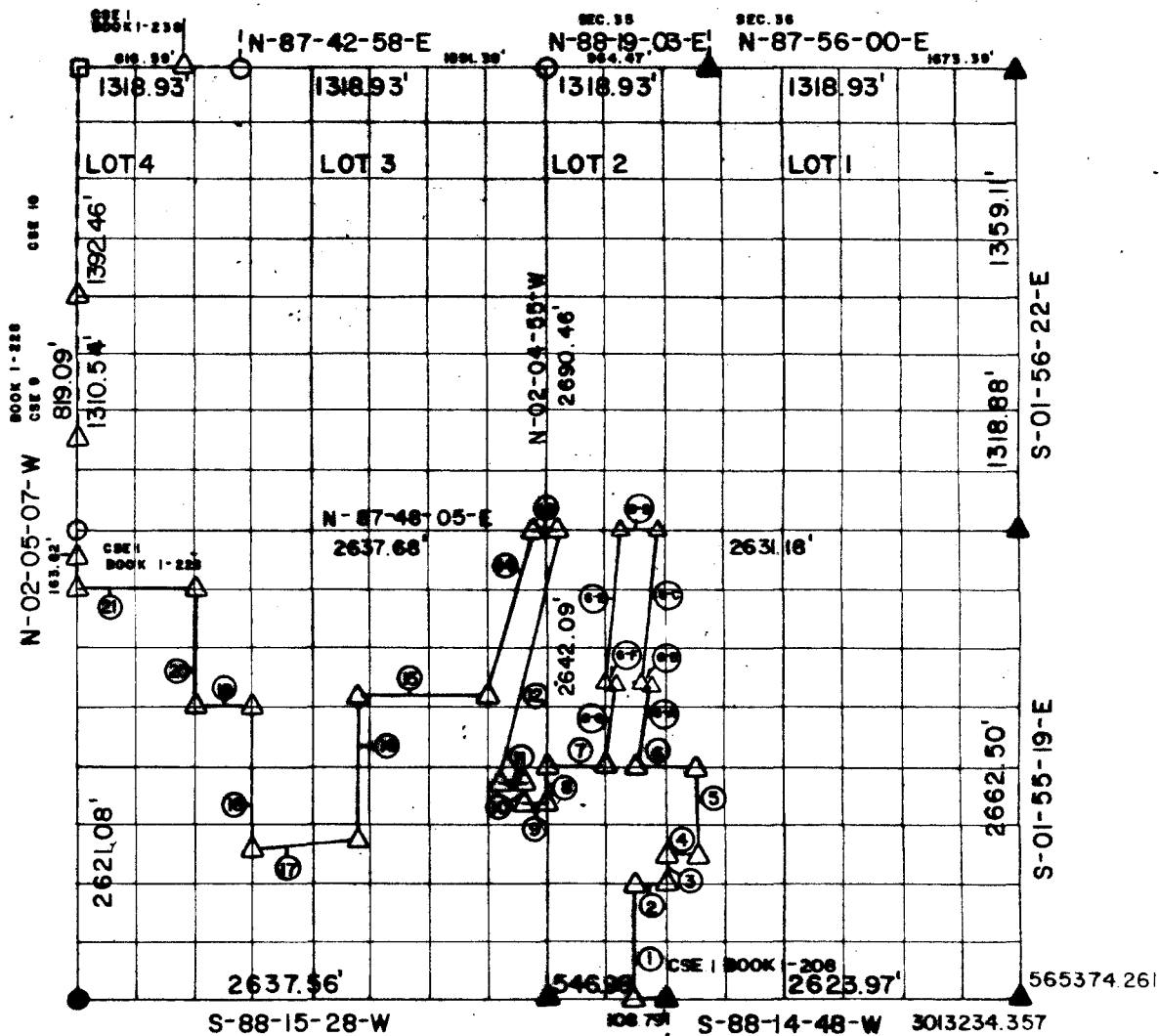
Billy J. Curtis
REGISTERED LAND SURVEYOR NO. 803

SHEET 1 of 2

RECORD BOUNDARY PLAT WISTER LAKE POTEAU RIVER OKLAHOMA



SEC. 1 T. 4N R. 25E LE FLORE COUNTY



NOTE: ALL BEARINGS AND DISTANCE ARE GRID

Course No.	Distance	Bearing	Course No.	Distance	Bearing
1	620.00'	N-02-01-59-W	14	879.26'	S-08-56-06-W
2	150.00'	N-88-08-07-E	15	710.65'	S-88-01-47-W
3	200.00'	N-02-01-59-W	16	737.01'	S-02-05-01-E
4	50.00'	N-88-08-07-E	17	649.68'	S-73-21-17-W
5	507.00'	N-04-42-01-E	18	729.16'	N-02-05-01-W
6	289.79'	S-88-01-24-W	19	330.00'	S-88-01-47-W
7	321.00'	S-88-01-25-W	20	660.00'	N-02-05-08-W
8	99.00'	S-02-04-55-W	21	660.00'	S-87-48-05-W
9	118.50'	S-88-01-47-W			
10	41.70'	N-02-04-55-E			
11	122.71'	S-88-01-47-W			
12	1903.64'	N-08-56-06-E			
13	163.00'	S-87-48-05-W			

CERTIFICATE OF SURVEY Field Book No. 1-227 Date SEP. 1977

HEREBY CERTIFY THAT THE ABOVE
PLAT IS A TRUE AND CORRECT
REPRESENTATION OF THE SURVEY
OF THE ABOVE SECTION

Bobby J. Carter

CURTIS & GUNN SURVEYING
STONEWALL, OKLA.

Under the Supervision of
U.S. ARMY CORPS OF ENGINEERS
TULSA DISTRICT, OKLAHOMA

SHEET 1 of 2

Updated

- LEGEND**
- △ — MONUMENT SET
 - ▲ — MONUMENT FOUND
 - — ORIGINAL CORNER
 - — IRON PIN FOUND
 - — IRON PIN SET

WISTE LAKE POTEAU RIVER OKLAHOMA

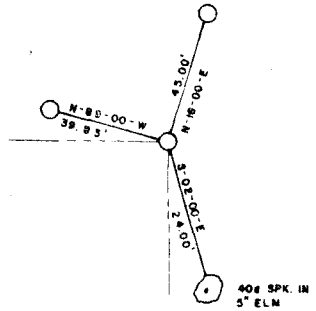
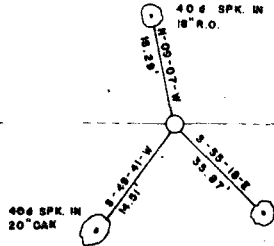
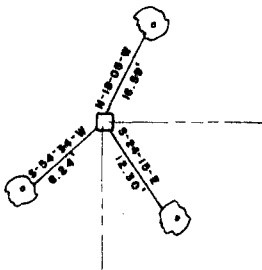
SECTION AND QUARTER SECTION CORNER
REFERENCES FOR

SEC. 1 T.4N., R.25E., 1 M., COUNTY-LE FLORE

N.W. CORNER

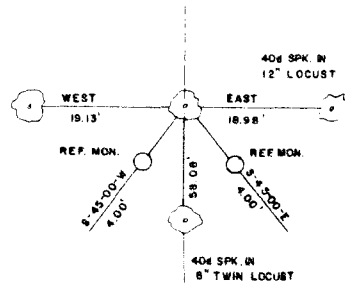
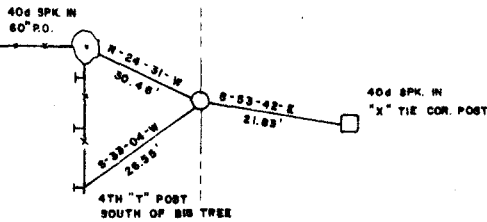
N.E. CORNER

NORTH 1/4 COR.



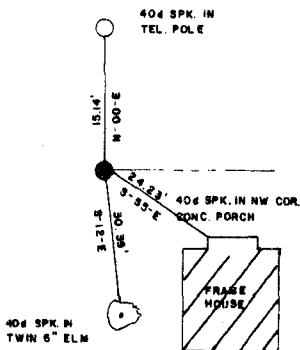
WEST 1/4 COR.

EAST 1/4 COR.

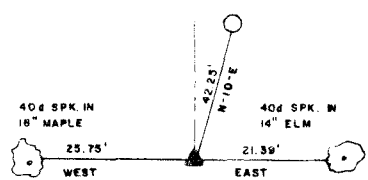


S.W. CORNER

S.E. CORNER



SOUTH 1/4 COR.



Field Book No. I-227 Date SEP. 1977

LEGEND

- ▲ — MONUMENT FOUND
- — MONUMENT SET
- — ORIGINAL CORNER
- — IRON PIN FOUND
- — IRON PIN SET

CURTIS & GUINN SURVEYING
STONEWALL, OKLA.

Bally L. Curtis
REGISTERED LAND SURVEYOR NO. 605

Under the Supervision of
U.S. ARMY CORPS OF ENGINEERS
TULSA DISTRICT, OKLAHOMA