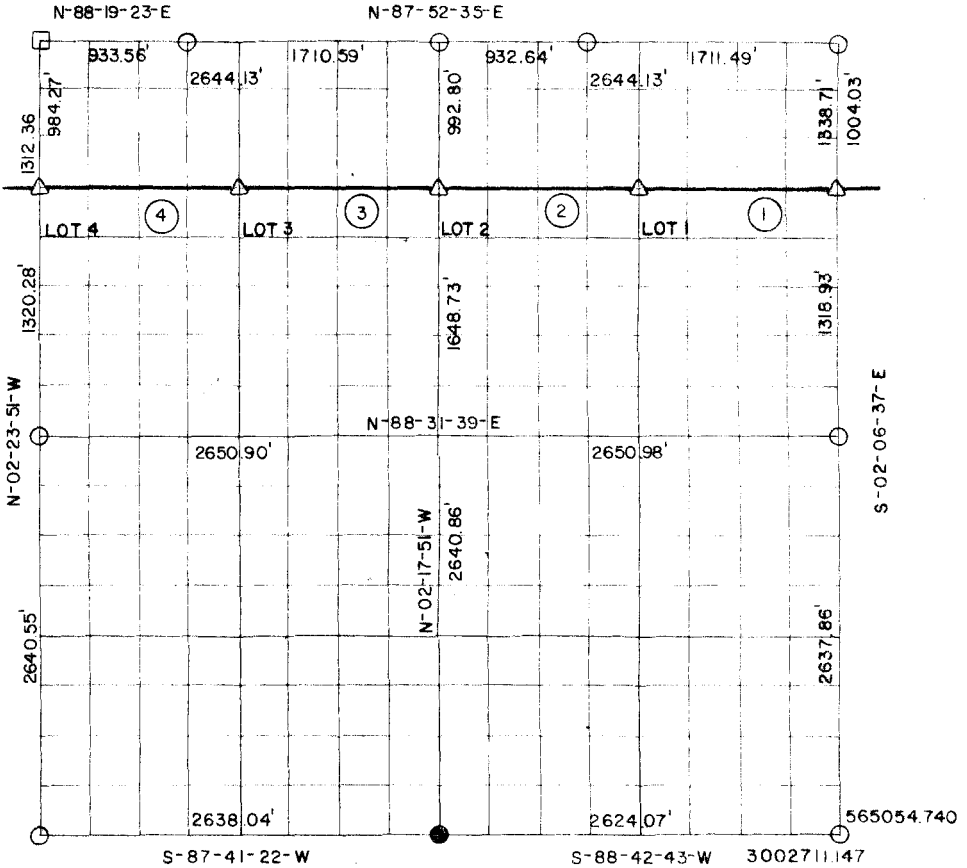


RECORD BOUNDARY PLAT WISTER LAKE POTEAU RIVER OKLAHOMA

01-53-31.466

SEC. 3 T 4N R 25E LE FLORE COUNTY



Course No.	Distance	Bearing	Course No.	Distance	Bearing
1	1320.15'	S-88-07-14-W			
2	1320.16'	S-88-07-14-W			
3	1321.54'	S-88-10-47-W			
4	1321.53'	S-88-15-31-W			

CERTIFICATE OF SURVEY Field Book No. I-229 Date SEP. 1977

I HEREBY CERTIFY THAT THE ABOVE
PLAT IS A TRUE AND CORRECT
REPRESENTATION OF THE SURVEY
OF THE ABOVE SECTION

Billy L. Carter
REGISTERED LAND SURVEYOR NO. 605

CURTIS & GUINN SURVEYING
STONEWALL, OKLA

Under the Supervision of
U.S. ARMY CORPS OF ENGINEERS
TULSA DISTRICT, OKLAHOMA

SHEET 1 of 2

- LEGEND
- ▲ — MONUMENT SET
 - ▲ — MONUMENT FOUND
 - — ORIGINAL CORNER
 - — IRON PIN FOUND
 - — IRON PIN SET

WISTEY LAKE POTEAU RIVER OKLAHOMA

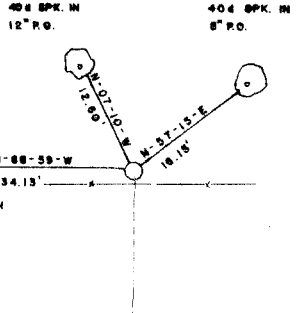
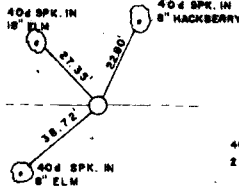
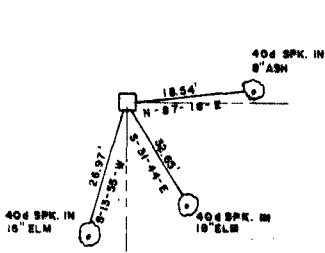
SECTION AND QUARTER SECTION CORNER REFERENCES FOR

SEC. 3 T. 4N., R. 25E., 1 M., COUNTY-LE FLORE

N.W. CORNER

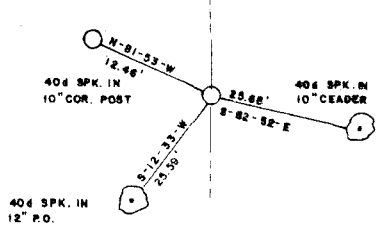
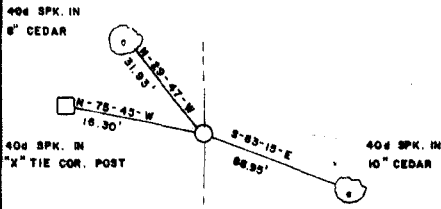
N.E. CORNER

NORTH 1/4 COR.



WEST 1/4 COR.

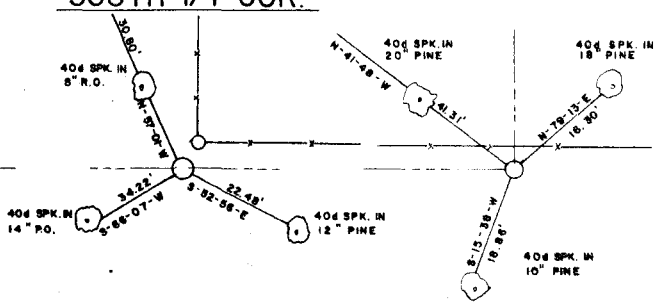
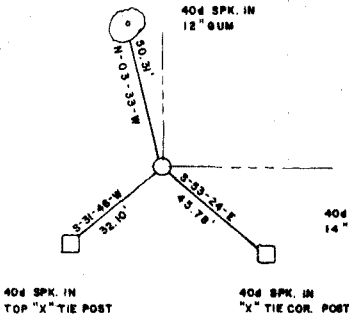
EAST 1/4 COR.



S.W. CORNER

S.E. CORNER

SOUTH 1/4 COR.



Field Book No. I-229 Date SEP. 1977

LEGEND

- ▲ — MONUMENT FOUND
- △ — MONUMENT SET
- — ORIGINAL CORNER
- — IRON PIN FOUND
- — IRON PIN SET

CURTIS & GUINN SURVEYING
STONEWALL, OKLA.

Bobby L. Curtis
REGISTERED LAND SURVEYOR NO. 693

Under the Supervision of
U.S. ARMY CORPS OF ENGINEERS
TULSA DISTRICT, OKLAHOMA