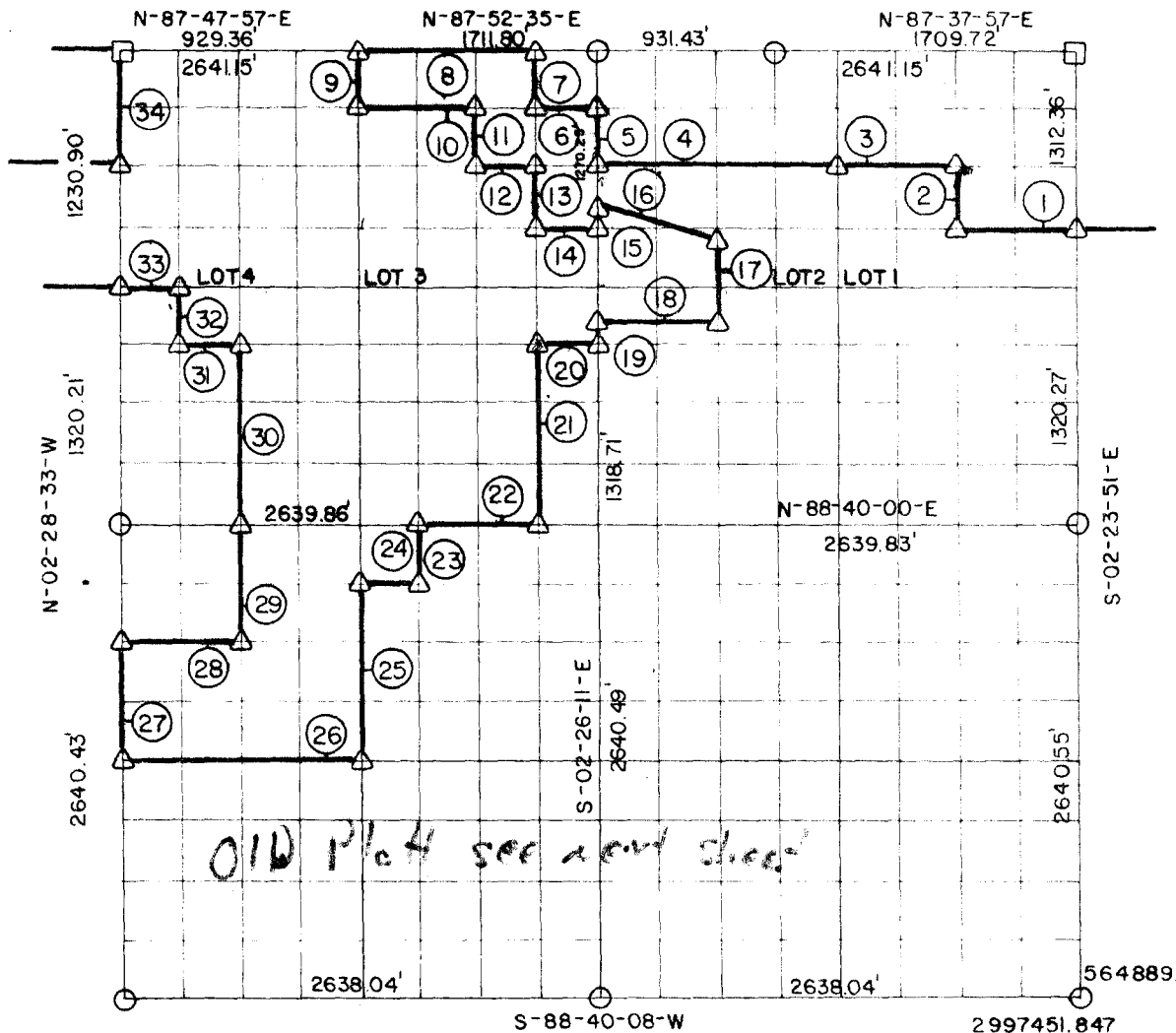


# RECORD BOUNDARY PLAT WISTER LAKE POTEAU RIVER OKLAHOMA

01-52-55.50

SEC. 4      T 4N      R 25E      LE FLORE COUNTY



NOTE: ALL BEARINGS AND DISTANCE ARE GRID

Course No.	Distance	Bearing	Course No.	Distance	Bearing
1	660.18'	S-88-21-52-W	22	659.96'	S-88-40-02-W
2	325.00'	N-02-24-28-W	23	330.06'	S-02-27-04-E
3	660.20'	S-88-05-48-W	24	329.95'	S-88-40-01-W
4	1320.23'	S-88-15-16-W	25	990.17'	S-02-27-23-E
5	317.58'	N-02-28-11-W	26	1319.47'	S-88-40-04-W
6	330.13'	S-88-03-42-W	27	660.11'	N-02-28-33-W
7	316.34'	N-02-28-29-W	28	659.85'	N-88-40-02-E
8	990.43'	S-87-50-56-W	29	660.11'	N-02-27-57-W
9	312.87'	S-02-27-22-E	30	989.88'	N-02-27-58-W
10	660.23'	N-88-03-42-E	31	330.07'	S-88-41-27-W
11	319.12'	S-02-28-46-E	32	330.01'	N-02-28-16-W
12	330.11'	N-88-16-27-E	33	330.10'	S-88-41-56-W
13	316.34'	S-02-28-29-E	34	571.10'	N-02-28-33-W
14	330.10'	N-88-25-11-E			
15	164.84'	N-02-28-11-W			
16	660.42'	S-78-23-49-E			
17	454.89'	S-02-25-36-E			
18	660.15'	S-88-38-12-W			
19	164.84'	S-02-28-11-E			
20	330.07'	S-88-41-27-W			
21	989.17'	S-02-26-29-E			

CERTIFICATE OF SURVEY    Field Book No. I-230    Date SEP. 1977

I HEREBY CERTIFY THAT THE ABOVE  
PLAT IS A TRUE AND CORRECT  
REPRESENTATION OF THE SURVEY  
OF THE ABOVE SECTION

CURTIS & GUINN SURVEYING  
STONEWALL, OKLA.

Under the Supervision of  
U.S. ARMY CORPS OF ENGINEERS  
TULSA DISTRICT, OKLAHOMA

SHEET 1 of 2

LEGEND

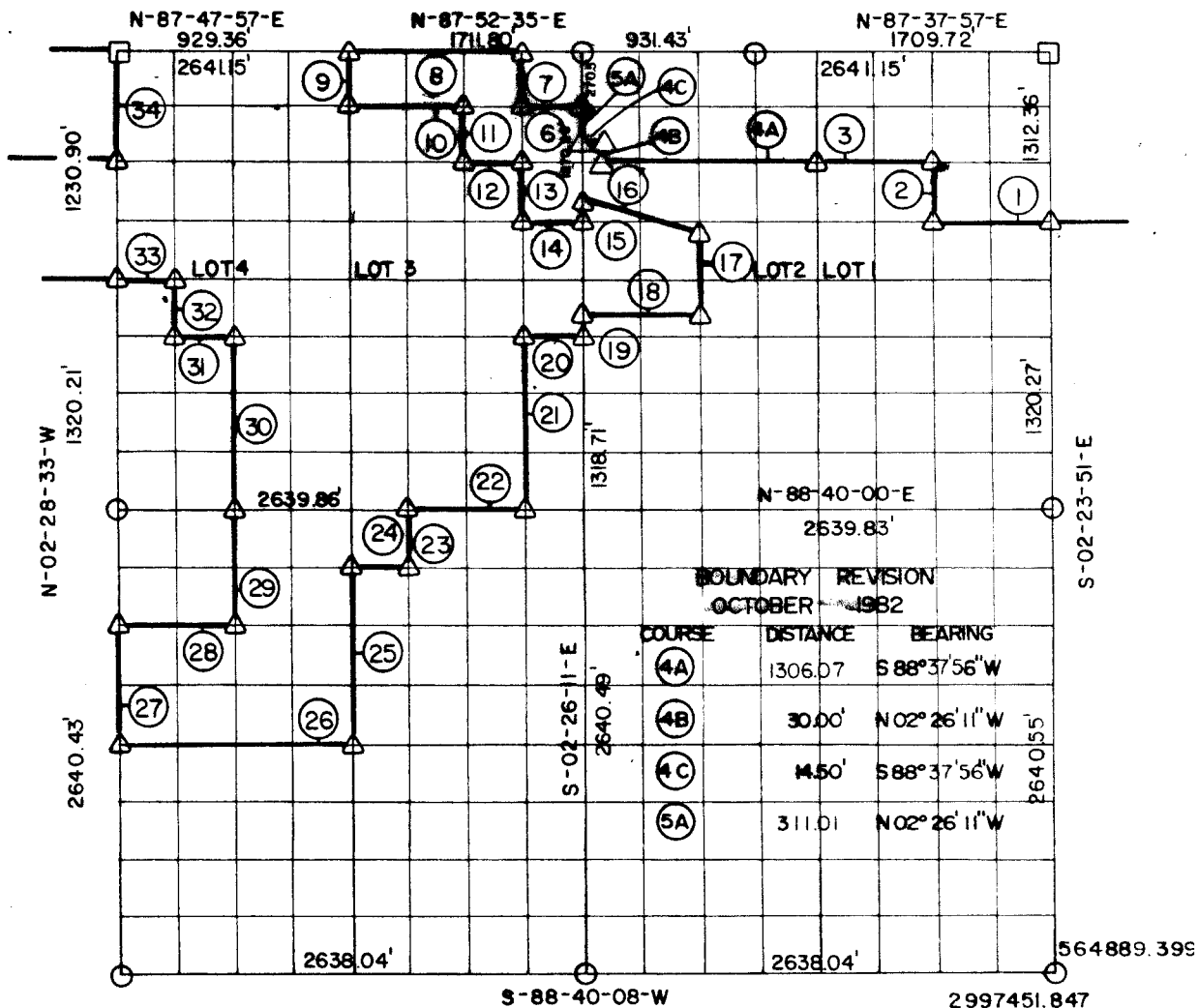
- △ — MONUMENT SET
- ▲ — MONUMENT FOUND
- — ORIGINAL CORNER
- — IRON PIN FOUND
- — IRON PIN SET

*Bobby L. Curtis*  
REGISTERED LAND SURVEYOR NO. 603

# RECORD BOUNDARY PLAT WISTER LAKE POTEAU RIVER OKLAHOMA

SEC. 4 T 4N R 25E LE FLORE COUNTY

01-82-85.501



NOTE ALL BEARINGS AND DISTANCE ARE BRID

Course No.	Distance	Bearing	Course No.	Distance	Bearing
1	680.23	S 88-37-56 W	22	659.96'	S-88-40-02-W
2	330.00	N 02-24-27 W	23	330.06'	S-02-27-04-E
3	660.29	S 88-37-56 W	24	329.95'	S-88-40-01-W
4	1306.07	S 88-37-56 W	25	990.17'	S-02-27-23-E
5	330.07	S 88-37-56 W	26	1319.47'	S-88-40-04-W
6	330.18	S 87-50-57 W	27	660.11'	N-02-28-33-W
7	270.49	N 02-28-28 W	28	659.85'	N-88-40-02-E
8	930.43	S 87-50-88 W	29	660.11'	N-02-27-57-W
9	260.68	S 02-27-22 E	30	969.88'	N-02-27-58-W
10	660.37	N 88-41-55 E	31	330.07'	S-88-41-27-W
11	330.00	S 02-28-48 E	32	330.01'	N-02-28-16-W
12	330.18	N 88-41-55 E	33	330.10'	S-88-41-56-W
13	330.00	S 02-28-28 E	34	571.10'	N-02-28-33-W
14	330.13	N 88-41-55 E			
15	118.78	N 02-26-11 W			
16	682.23	S 77-48-23 E			
17	454.89'	S-02-25-36-E			
18	660.15'	S-88-38-12-W			
19	164.84'	S-02-26-11-E			
20	330.07'	S-88-41-27-W			
21	969.17'	S-02-26-29-E			

CERTIFICATE OF SURVEY Field Book No. J-230 Date SEP. 1977

I HEREBY CERTIFY THAT THE ABOVE  
PLAT IS A TRUE AND CORRECT  
REPRESENTATION OF THE SURVEY  
OF THE ABOVE SECTION

*Billy L. Curtis*  
REGISTERED LAND SURVEYOR NO. 809

CURTIS & GUNN SURVEYING  
STONEWALL, OKLA.

Under the Supervision of  
U.S. ARMY CORPS OF ENGINEERS  
TULSA DISTRICT, OKLAHOMA

SHEET 1 of 2

LEGEND

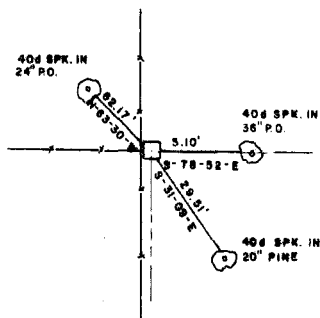
- △ — MONUMENT SET
- ▲ — MONUMENT FOUND
- — ORIGINAL CORNER
- — IRON PIN FOUND
- — IRON PIN SET

# WISTE L LAKE POTEAU RIVER OKLAHOMA

SECTION AND QUARTER SECTION CORNER  
REFERENCES FOR

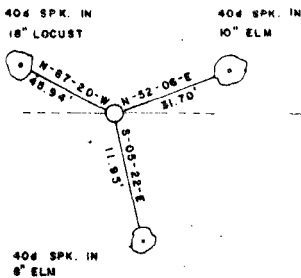
SEC. 4 T.4N., R.25E., 1 M., COUNTY-LE FLORE

N.W. CORNER

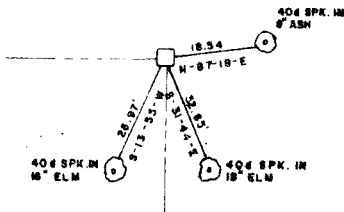


N.E. CORNER

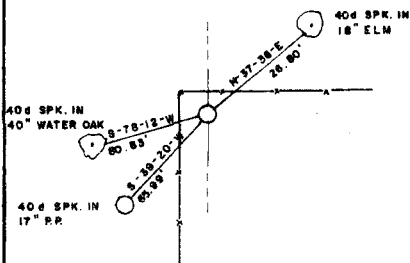
NORTH 1/4 COR.



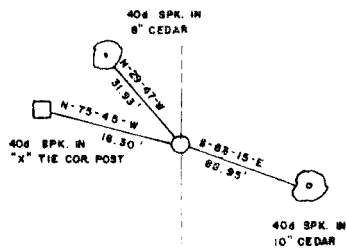
EAST 1/4 COR.



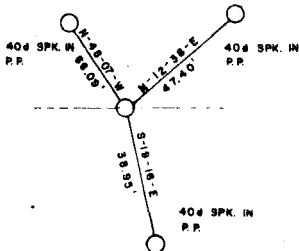
WEST 1/4 COR.



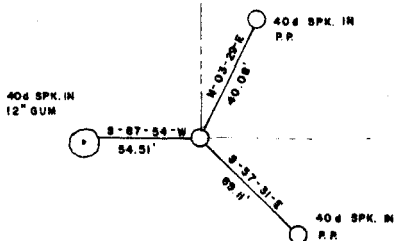
S.E. CORNER



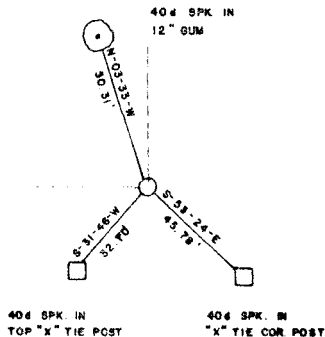
SOUTH 1/4 COR.



S.W. CORNER



S.E. CORNER



Field Book No. 1-230 Date SEP. 1977

**LEGEND**

- ▲ — MONUMENT FOUND
- △ — MONUMENT SET
- — ORIGINAL CORNER
- — IRON PIN FOUND
- — IRON PIN SET

CURTIS & GUINN SURVEYING  
STONEWALL, OKLA.

*Bobby L. Curtis*  
REGISTERED LAND SURVEYOR NO. 603

Under the Supervision of  
U.S. ARMY CORPS OF ENGINEERS  
TULSA DISTRICT, OKLAHOMA