



# WISTEY LAKE POTEAU RIVER OKLAHOMA

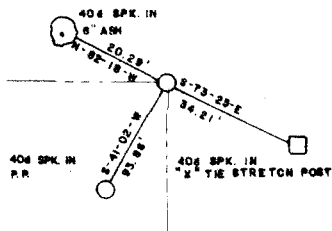
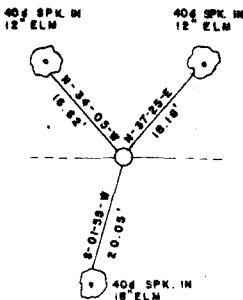
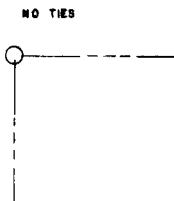
SECTION AND QUARTER SECTION CORNER  
REFERENCES FOR

SEC. 6 T.4N., R.25E., 1M., COUNTY-LE FLORE

N.W. CORNER

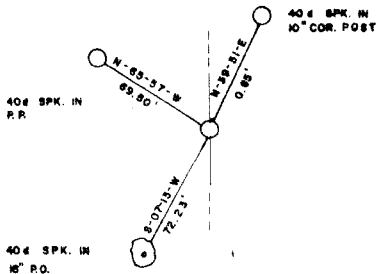
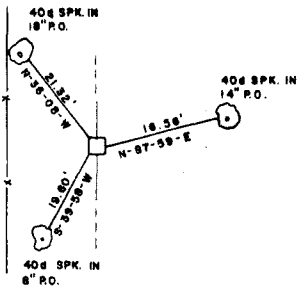
N.E. CORNER

NORTH 1/4 COR.



WEST 1/4 COR.

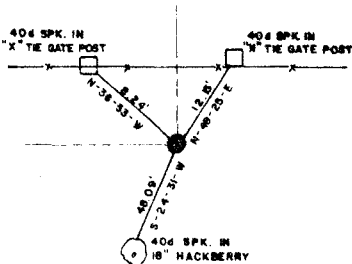
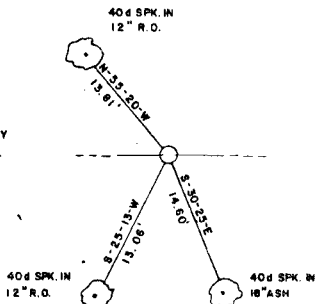
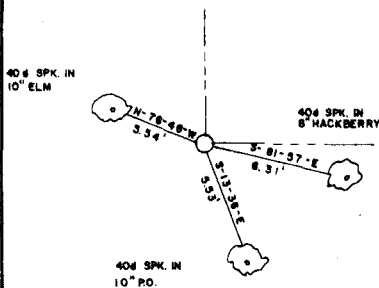
EAST 1/4 COR.



S.W. CORNER

SOUTH 1/4 COR.

S.E. CORNER



Field Book No. 1-232      Date SEP. 1977

**LEGEND**

- ▲ — MONUMENT FOUND
- △ — MONUMENT SET
- — ORIGINAL CORNER
- — IRON PIN FOUND
- — IRON PIN SET

CURTIS & GUINN SURVEYING  
STONEWALL, OKLA.

*Billy L. Curtis*  
REGISTERED LAND SURVEYOR NO. 603

Under the Supervision of  
U. S. ARMY CORPS OF ENGINEERS  
TULSA DISTRICT, OKLAHOMA