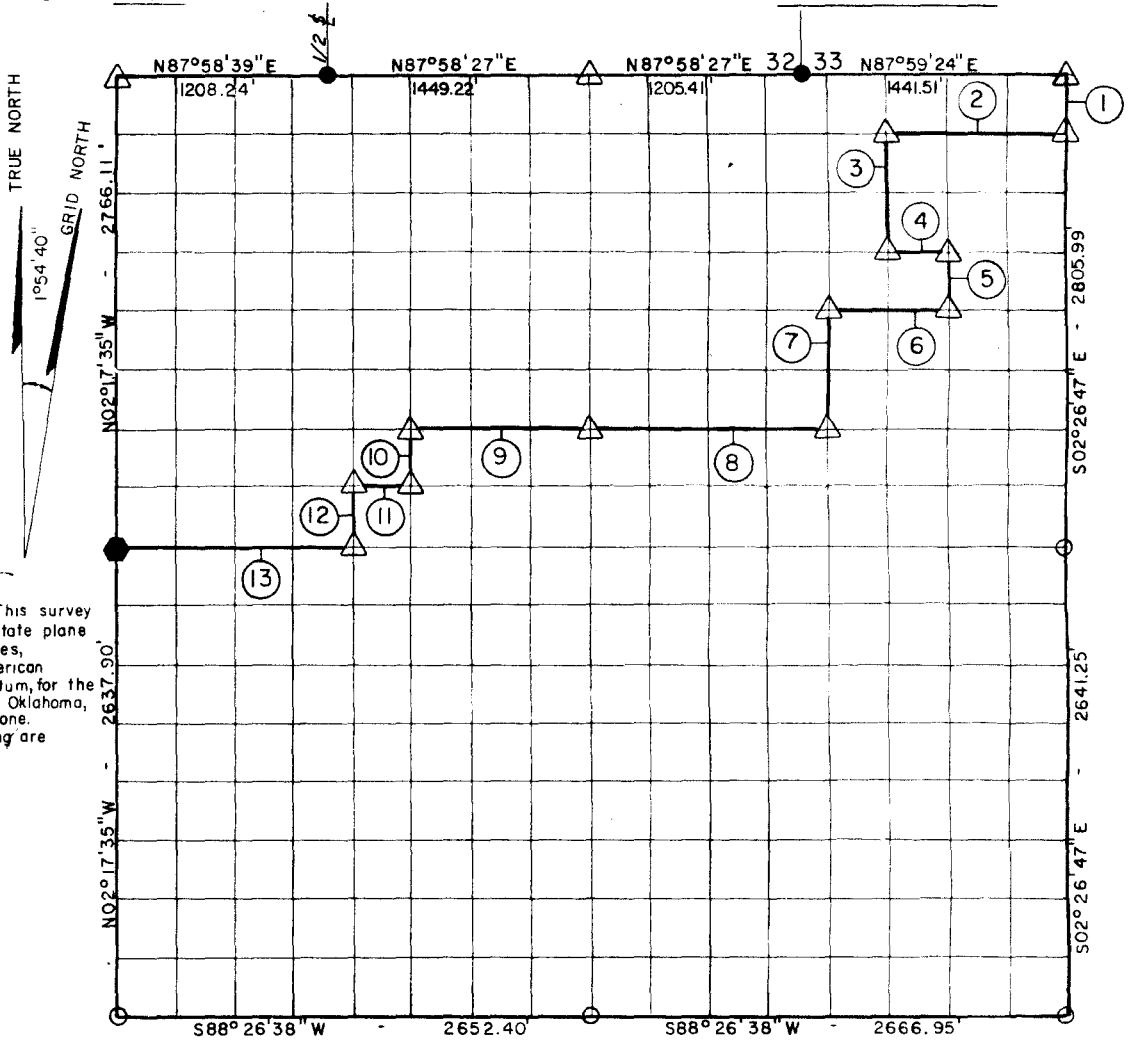


PARTIAL BOUNDARY SURVEYS  
 AREA "G" WISTER LAKE  
 POTEAU RIVER, OKLAHOMA

Performed Under Contract Number: DACW 56-72-C 0126

SEC. 4 T-4-N R-26-E COUNTY LEFLORE



NOTE: This survey based on state plane Coordinates, North American 1972 datum, for the State of Oklahoma, South Zone. All bearings are GRID

Course No.	Distance	Bearing	Course No.	Distance	Bearing
1	510.30'	S02°26'47\"E			
2	992.54'	S88°28'32\"W			
3	656.22'	S02°21'30\"E			
4	331.18'	N88°27'24\"E			
5	328.06'	S02°23'16\"E			
6	662.69'	S88°26'50\"W			
7	656.34'	S02°19'45\"E			
8	1328.20'	S88°25'41\"W			
9	996.23'	S88°25'41\"W			
10	328.55'	S02°15'54\"E			
11	331.02'	S88°25'06\"W			
12	328.61'	S02°16'27\"E			
13	1328.06'	S88°24'33\"W			

LEGEND

- ▲ MONUMENT SET
- MONUMENT FD.
- OKLA. STATE HWY. DEPT. COR.
- IRON PINS SET
- IRON PINS FD.
- STONES FOUND
- USGS MON. FD.

TOPOGRAPHIC ENGINEERING CO.  
 Under the Supervision of  
 DEPARTMENT OF THE ARMY  
 TULSA DISTRICT CORPS OF ENGINEERS

Field Book No  
 I-204  
 Date 9/11/72  
 Sheet 1 of 1

I, John F. Keating, Oklahoma registered land surveyor number 165, do hereby certify that this plat represents the results of an on the ground survey made in Section T4N-R E, under my supervision and is true and correct to the best of my knowledge.

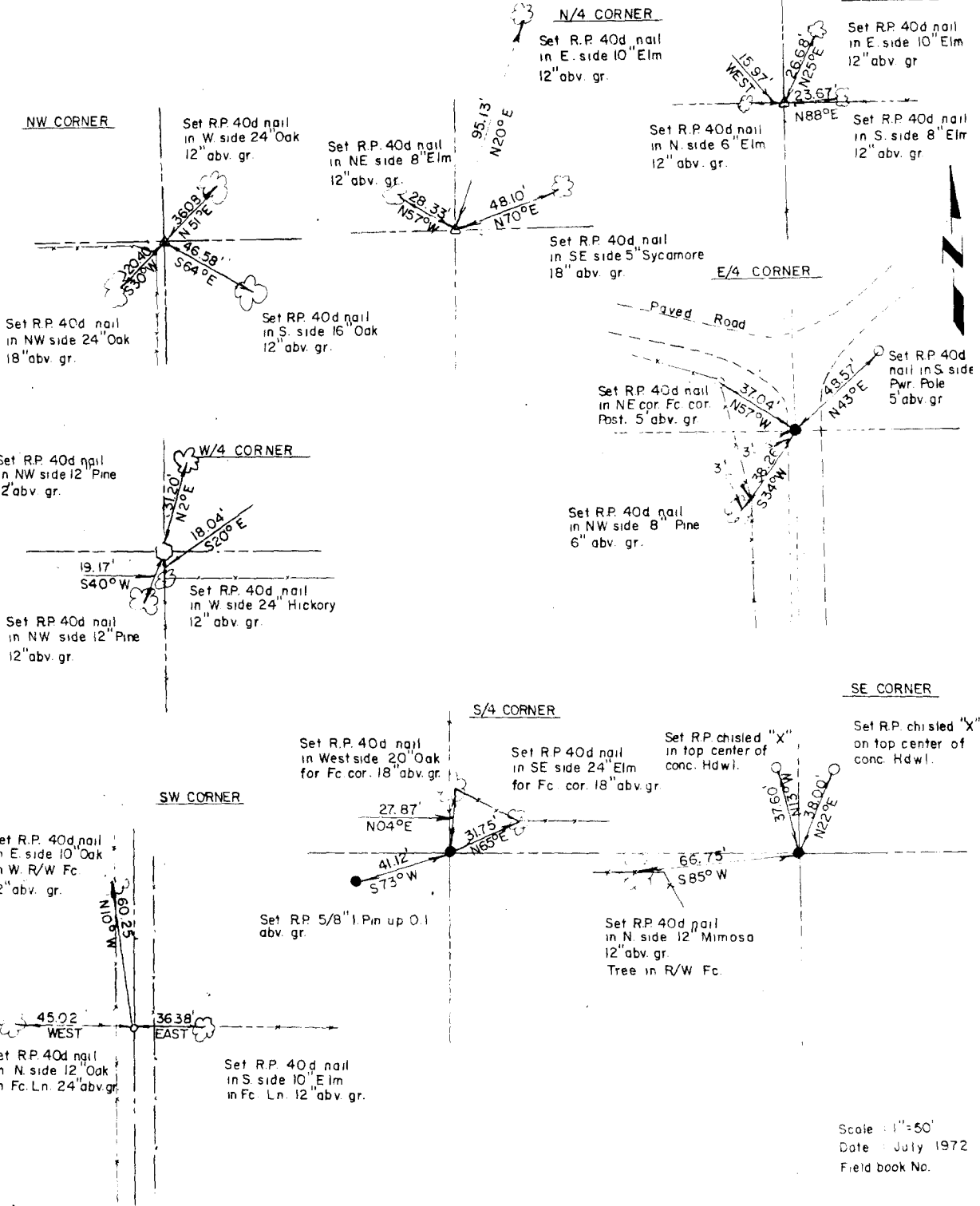
*John F. Keating*  
 John F. Keating, Okla. R.L.S. # 165

AREA "G" WISTER LAKE  
 POTEAU RIVER, OKLAHOMA  
 SECTION AND QUARTER SECTION CORNER  
 REFERENCES FOR

SEC. 4, T 4 N, R 26 E

COUNTY - LEFLORE

NE CORNER



LEGEND

- ◊ Monument Set
- Stones Found
- Iron pin Found
- ◐ Okla. State Hwy. Dept. Cor.
- ◑ USGS Mon. Found
- ◒ Monument Found
- Iron pin Set