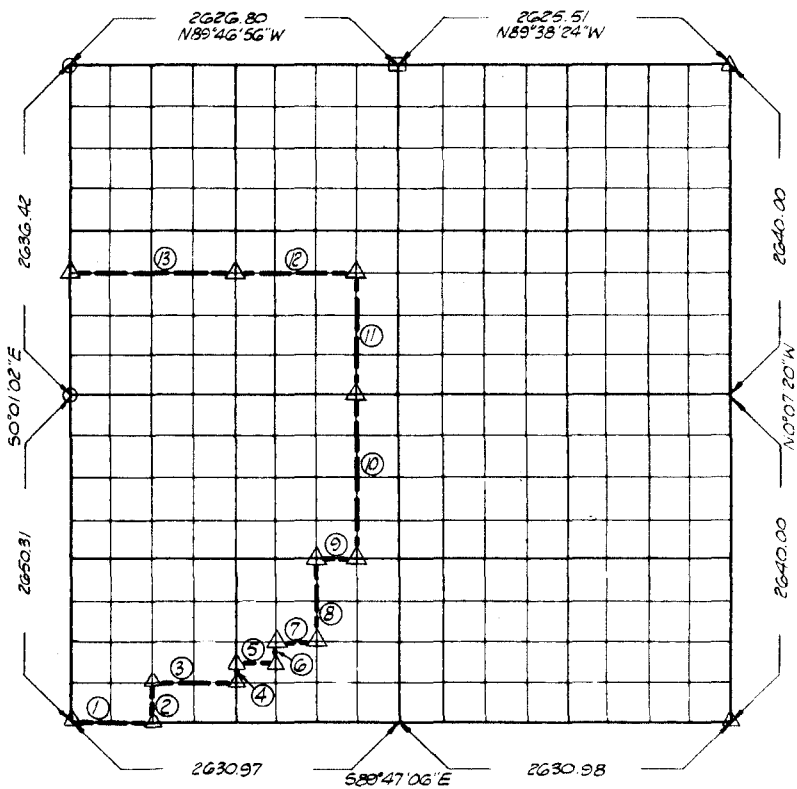


PARTIAL BOUNDARY SURVEYS - AREA "C"
WISTER LAKE

POTEAU RIVER, OKLAHOMA

Performed Under Contract Number DACW 56-71-C-0213

SEC. 10 T-5N R-22E COUNTY LeFlore



Course No.	Distance	Bearing
1	657.74	S89°47'06\"E
2	331.07	N0°01'43\"W
* 3	657.68	S89°45'57\"E
4	165.43	N0°02'23\"W
5	328.82	S89°45'23\"E
† 6	165.37	N0°02'44\"W
7	328.81	S89°44'49\"E
8	661.27	N0°03'04\"W
9	328.74	S89°42'31\"E
10	1322.09	N0°03'25\"W
11	990.92	N0°03'25\"W
12	985.55	N89°41'18\"W
13	1314.06	N89°41'18\"W

Course No.	Distance	Bearing

* Monument set 100° West of PT 3-4 along Cse 3 due to pond.
† Monument set 0° South along Cse 6 line extended South due to fence.

CERTIFICATE OF SURVEY

I HEREBY CERTIFY THAT THE ABOVE PLAT IS A TRUE AND CORRECT REPRESENTATION OF THE SURVEY MADE IN SECTION 10, T-5N, R-22E LeFlore COUNTY, OKLAHOMA

Edwards M. Coon
LICENSED LAND SURVEYOR

Field Book No. 1-196, Date 12/28/71

PHILLIPS & STONG ENGINEERING CO.
Under the Supervision of
U.S. ARMY ENGINEER DISTRICT, TULSA
CORPS OF ENGINEERS
SHEET 1 of 1

LEGEND
▲ MONUMENT
□ ORIGINAL CORNER
○ IRON PIN