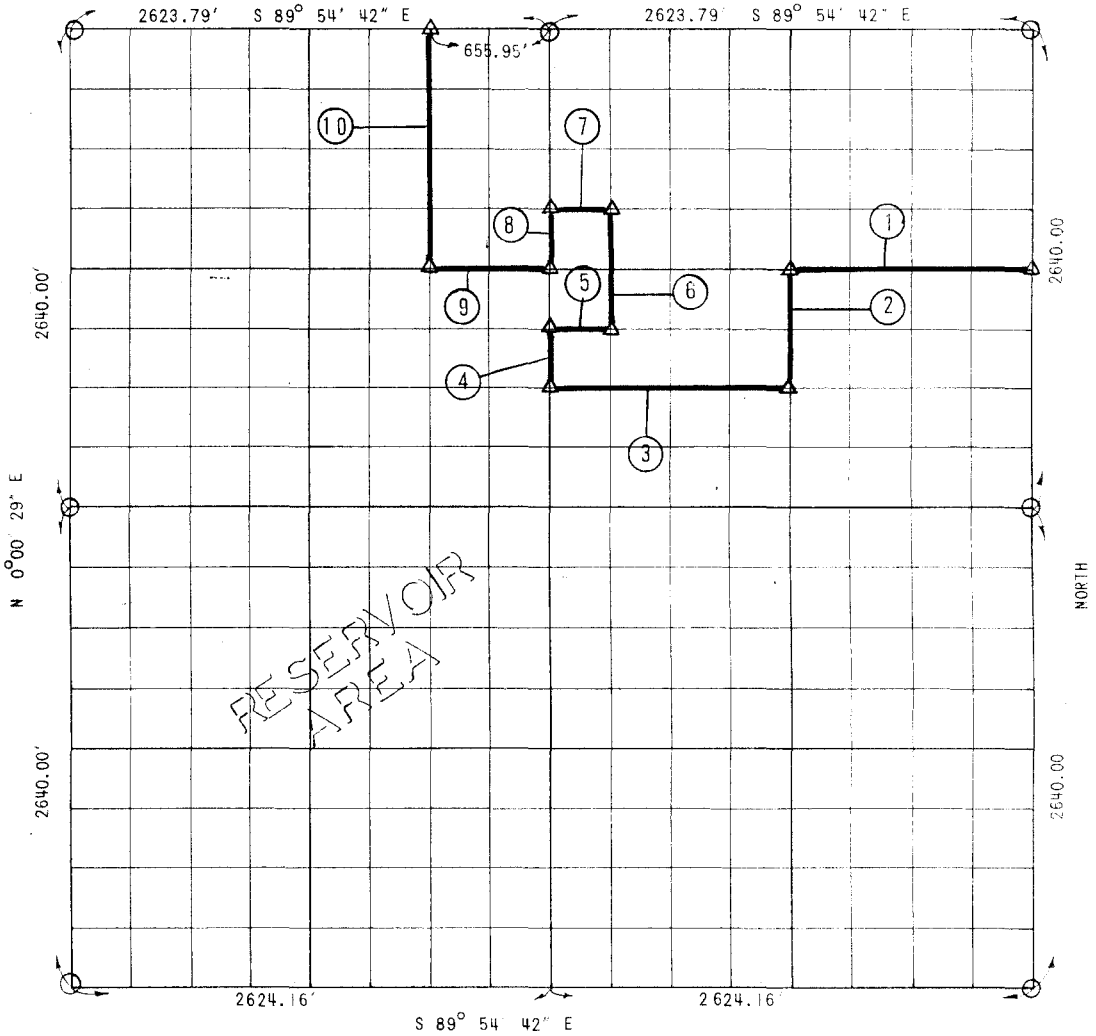


WISTER RESERVOIR

POTEAU RIVER, OKLAHOMA

PARTIAL BOUNDARY SURVEYS OF SECTION 11, T 5 N., R 22 E., LEFLORE COUNTY



COURSE	DISTANCE	BEARING	COURSE	DISTANCE	BEARING
1	1311.94'	N 89° 54' 42" W			
2	660.00'	S 0° 00' 07" W			
3	1311.96'	N 89° 54' 42" W			
4	330.00'	N 0° 00' 14" E			
5	327.99'	S 89° 54' 42" E			
6	660.00'	N 0° 00' 13" E			
7	327.98'	N 89° 54' 42" W			
8	330.00'	S 0° 00' 14" W			
9	655.97'	N 89° 54' 42" W			
10	1320.00'	N 0° 00' 18" E			

SURVEY BOOK NO. 1-175


LEGEND

C E MONUMENT
 HWY DEPT MON
 ORIGINAL STONE
 IRON PIN

CONTRACT NO. DACW56-71-C-0122
 PERFORMED UNDER SUPERVISION OF
 US ARMY ENGINEER DISTRICT, TULSA
 CORPS OF ENGINEERS

CERTIFICATE OF SURVEY
 THIS DRAWING CORRECTLY REPRESENTS A SECTION SURVEY
 COMPLETED UNDER MY SUPERVISION, JUNE 1971

BY
SLADE & ASSOCIATES


 JAMES L. SLADE
 REGISTERED LAND SURVEYOR
 OKLAHOMA NO. 4

CONSULTING ENGINEERS
TULSA, OKLAHOMA