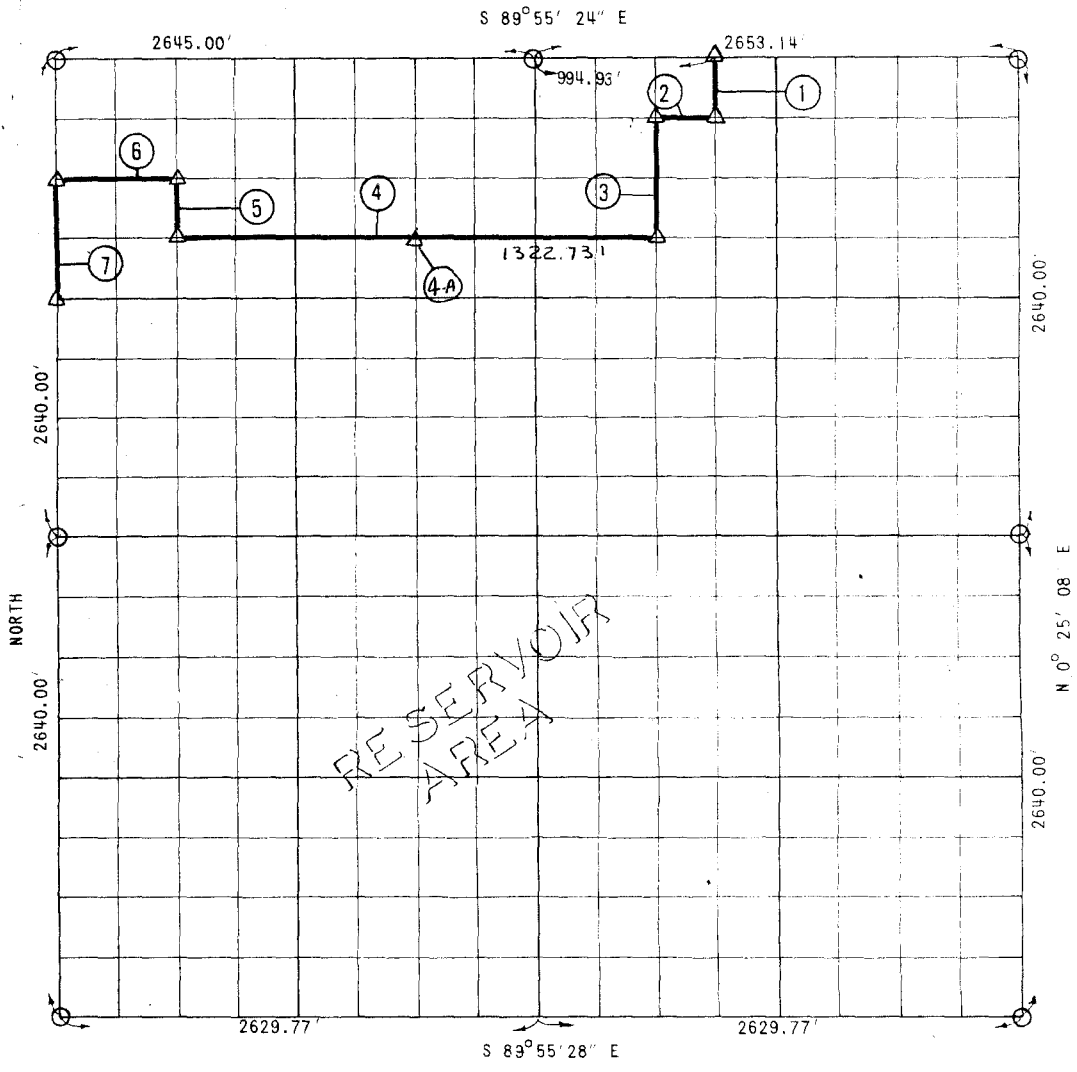


WISTER RESERVOIR

POTEAU RIVER, OKLAHOMA

PARTIAL BOUNDARY SURVEYS OF SECTION 12 T 5 N. R 22 E. LEFLORE COUNTY



COURSE	DISTANCE	BEARING	COURSE	DISTANCE	BEARING
1	330.00'	S 0° 15' 37" W			
2	331.46'	N 89° 55' 25" W			
3	659.99'	S 0° 13' 43" W			
4	2643.80'	N 89° 55' 25" W			
5	330.00'	N 0° 02' 29" E			
6	660.77'	N 89° 55' 25" W			
7	660.00'	SOUTH			

SURVEY BOOK NO. 1-176

- LEGEND**
- △ C E MONUMENT ● HWY DEPT MON
 - ORIGINAL STONE ○ IRON PIN

CONTRACT NO. DACW 56-71-C-0122
 PERFORMED UNDER SUPERVISION OF
 US ARMY ENGINEER DISTRICT, TULSA
 CORPS OF ENGINEERS

BY
SLADE & ASSOCIATES

CERTIFICATE OF SURVEY

THIS DRAWING CORRECTLY REPRESENTS A SECTION SURVEY
 COMPLETED UNDER MY SUPERVISION JUNE 1971

James L. Slade
 JAMES L. SLADE
 REGISTERED LAND SURVEYOR