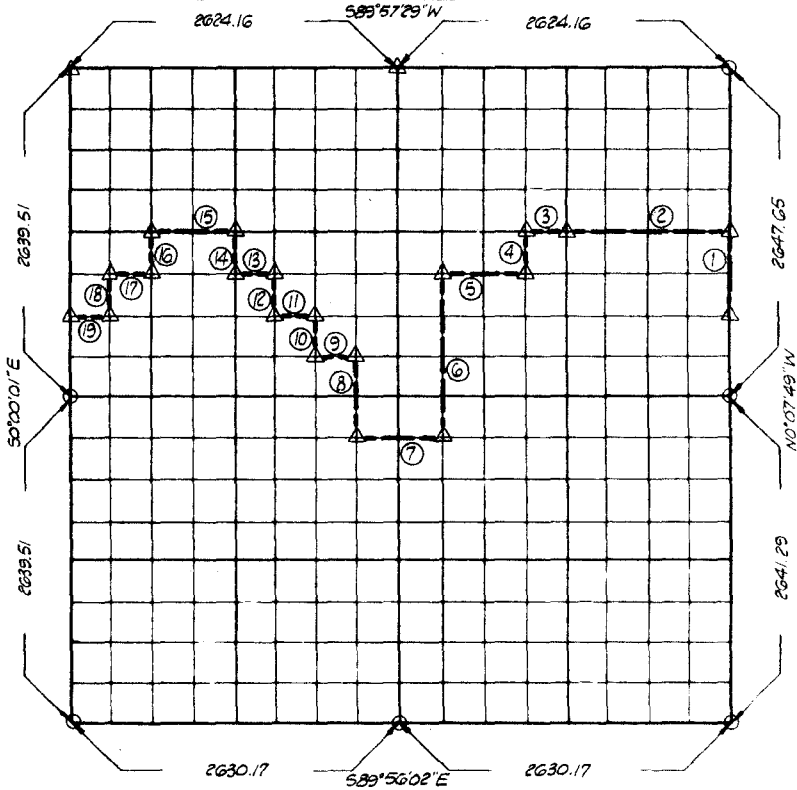


PARTIAL BOUNDARY SURVEYS - AREA "C"  
WISTER LAKE

POTEAU RIVER, OKLAHOMA

Performed Under Contract Number DACW 56-71-C-0213

SEC. 14 T-5 N R-22 E COUNTY LeFlore



Course No.	Distance	Bearing	Course No.	Distance	Bearing
1	661.91	N0°07'49\"W	18	329.98	50°00'30\"E
2	1312.83	N89°58'48\"W	19	328.30	589°59'55\"W
3	328.21	N89°58'49\"W			
4	330.52	50°05'23\"E			
5	656.51	N89°57'53\"W			
6	1321.25	50°04'24\"E			
7	656.89	N89°57'03\"W			
8	660.42	N0°03'26\"W			
9	328.35	N89°59'40\"W			
10	330.17	N0°02'57\"W			
11	328.30	589°59'55\"W			
12	330.13	N0°02'27\"W			
13	328.25	589°59'31\"W			
14	330.09	N0°01'58\"W			
15	656.42	589°59'06\"W			
16	330.01	50°00'59\"E			
17	328.25	589°59'31\"W			

CERTIFICATE OF SURVEY Field Book No. 1-198 Date 12/28/71

I HEREBY CERTIFY THAT THE ABOVE PLAT IS A TRUE AND CORRECT REPRESENTATION OF THE SURVEY MADE IN SECTION 14, T-5 N, R-22 E LeFlore COUNTY, OKLAHOMA

Edwards M. Coon  
LICENSED LAND SURVEYOR

PHILLIPS & STONG ENGINEERING CO.  
Under the Supervision of  
U.S. ARMY ENGINEER DISTRICT, TULSA  
CORPS OF ENGINEERS  
SHEET 1 of 1

LEGEND  
▲ MONUMENT  
□ ORIGINAL CORNER  
○ IRON PIN