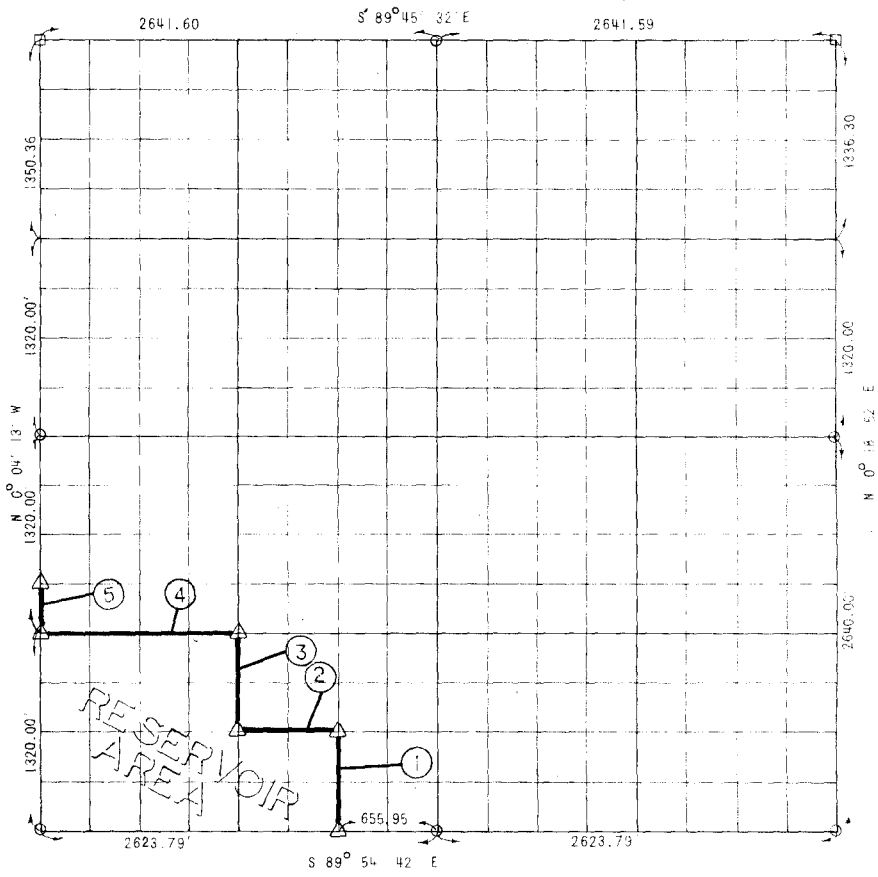


WISTER RESERVOIR POTEAU RIVER, OKLAHOMA

PARTIAL BOUNDARY SURVEYS OF SECTION 2 T 5 N. R 22 E. LEFLORE COUNTY



COURSE	DISTANCE	BEARING	COURSE	DISTANCE	BEARING
1	655.95	S 89° 54' 42" E			
2	660.00	N 0° 01' 33" E			
3	666.00	N 89° 54' 42" W			
4	656.50	N 0° 04' 26" E			
5	330.00	N 89° 54' 41" W			

SURVEY BOOK NO. 1-172

LEGEND

- △ C & E MONUMENT ● HWY DEPT MON
- ORIGINAL STONE ○ IRON PIN

CONTRACT NO. DACW56-71-C-0122
 PERFORMED UNDER SUPERVISION OF
 US ARMY ENGINEER DISTRICT, TULSA
 CORPS OF ENGINEERS

CERTIFICATE OF SURVEY
 THIS DRAWING CORRECTLY REPRESENTS A SECTION SURVEY
 COMPLETED UNDER MY SUPERVISION JUNE 1971

BY
SLADE & ASSOCIATES

James L. Slade
 JAMES L. SLADE
 REGISTERED LAND SURVEYOR
 OKLAHOMA NO. 4