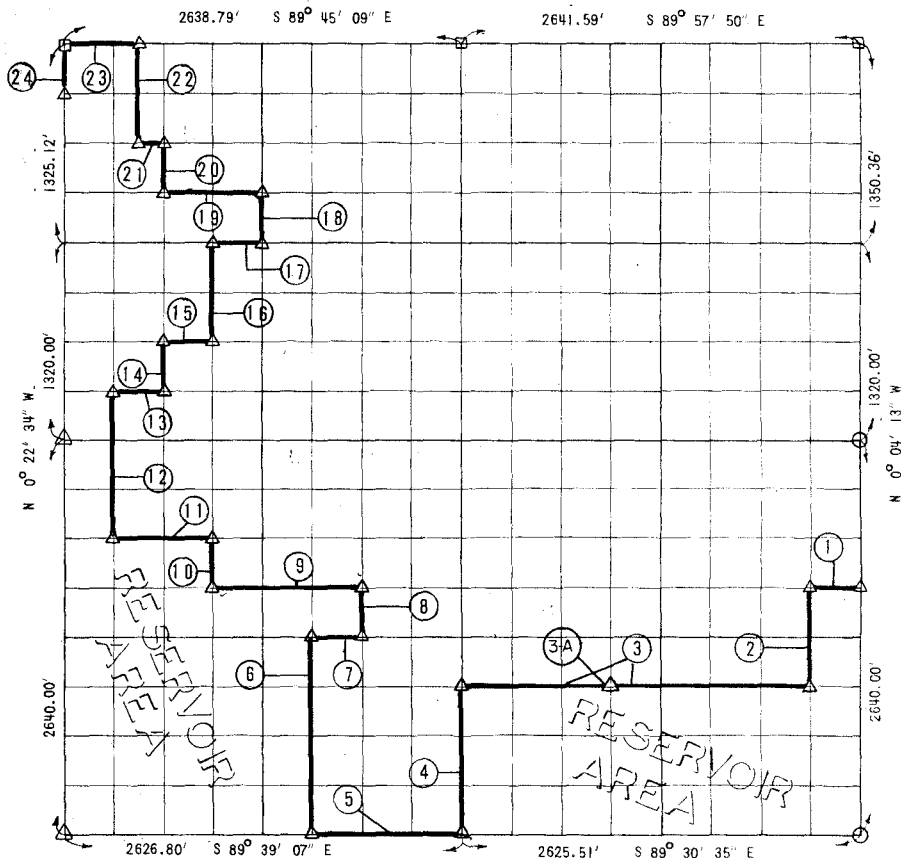


WISTER RESERVOIR POTEAU RIVER, OKLAHOMA

PARTIAL BOUNDARY SURVEYS OF SECTION 3, T 5 N., R 22 E., LEFLORE COUNTY



COURSE	DISTANCE	BEARING	COURSE	DISTANCE	BEARING
1	328.82'	N 89° 30' 39" W	15	329.29'	S 89° 39' 14" E
2	660.00'	S 0° 05' 32" E	16	660.00'	N 0° 19' 38" W
3	2299.97'	N 89° 30' 38" W	17	329.48'	S 89° 39' 15" E
4	990.00'	S 0° 14' 45" E	18	331.84'	N 0° 18' 39" W
5	985.05'	N 89° 39' 07" W	19	659.14'	N 89° 40' 44" W
6	1320.00'	N 0° 17' 41" W	20	331.56'	N 0° 20' 36" W
7	328.73'	S 89° 39' 10" E	21	189.33'	N 89° 42' 13" W
8	330.00'	N 0° 16' 42" W	22	662.96'	N 0° 22' 33" W
9	986.46'	N 89° 39' 11" W	23	470.00'	N 89° 45' 09" W
10	330.00'	N 0° 19' 38" W	24	335.12'	S 0° 22' 34" E
11	657.83'	N 89° 39' 11" W			
12	990.00'	N 0° 21' 35" W			
13	329.20'	S 89° 39' 14" E			
14	330.00'	N 0° 20' 37" W			

SURVEY BOOK NO. 1-173

LEGEND

- △ C E MONUMENT ● HWY DEPT MON
- ORIGINAL STONE ○ IRON PIN

CONTRACT NO. DACW56-71-C-0122
 PERFORMED UNDER SUPERVISION OF
 US ARMY ENGINEER DISTRICT, TULSA
 CORPS OF ENGINEERS
 BY:

CERTIFICATE OF SURVEY
 THIS DRAWING CORRECTLY REPRESENTS A SECTION SURVEY
 COMPLETED UNDER MY SUPERVISION JUNE 1971

SLADE & ASSOCIATES

James L. Slade
 JAMES L. SLADE
 REGISTERED LAND SURVEYOR
 OKLAHOMA NO. 4