

PARTIAL BOUNDARY SURVEYS

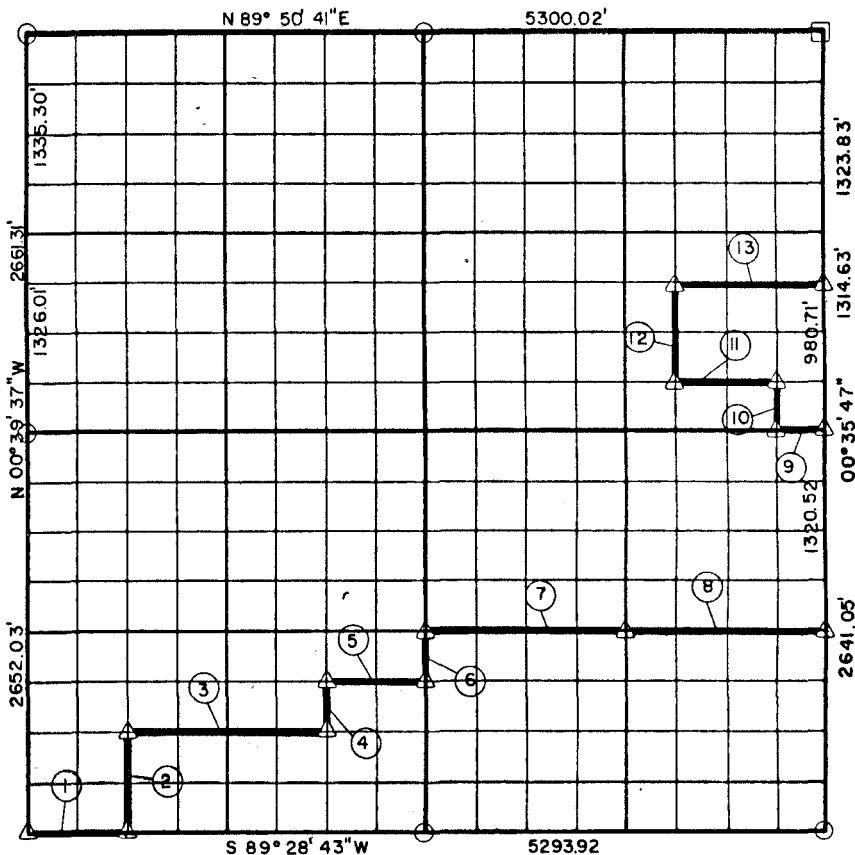
AREA "B"

WISTER RESERVOIR

POTEAU RIVER, OKLAHOMA

Performed Under Contract Number DACW 56-71 - C - 0115

SECTION 5, T-5-N R-22-E LATIMER COUNTY



Course No.	Distance	Bearing	Course No.	Distance	Bearing
1	661.74'	N 89° 28' 43" E			
2	662.66'	N 00° 39' 08" W			
3	1323.67'	N 89° 30' 30" E			
4	330.99'	N 00° 38' 11" W			
5	661.88'	N 89° 31' 23" E			
6	330.82'	N 00° 37' 42" W			
7	1323.85'	N 89° 32' 16" E			
8	1323.85'	N 89° 32' 16" E			
9	331.06'	S 89° 35' 50" W			
10	328.84'	N 00° 36' 01" W			
11	662.16'	S 89° 37' 41" W			
12	653.14'	N 00° 36' 30" W			
13	993.38'	N 89° 41' 24" E			

Book No. 1-166

Date: JUNE, 1971

- △ Monument
- Original Corner
- Iron Pin

I, George L. Munde, a Registered Land Surveyor, do hereby certify that the above plat is a true and accurate survey of Section 5, T-5-N, R-22-E as made under my supervision.

*George L. Munde*  
 GEORGE L. MUNDE  
 Reg. Land Surveyor L.S. 587