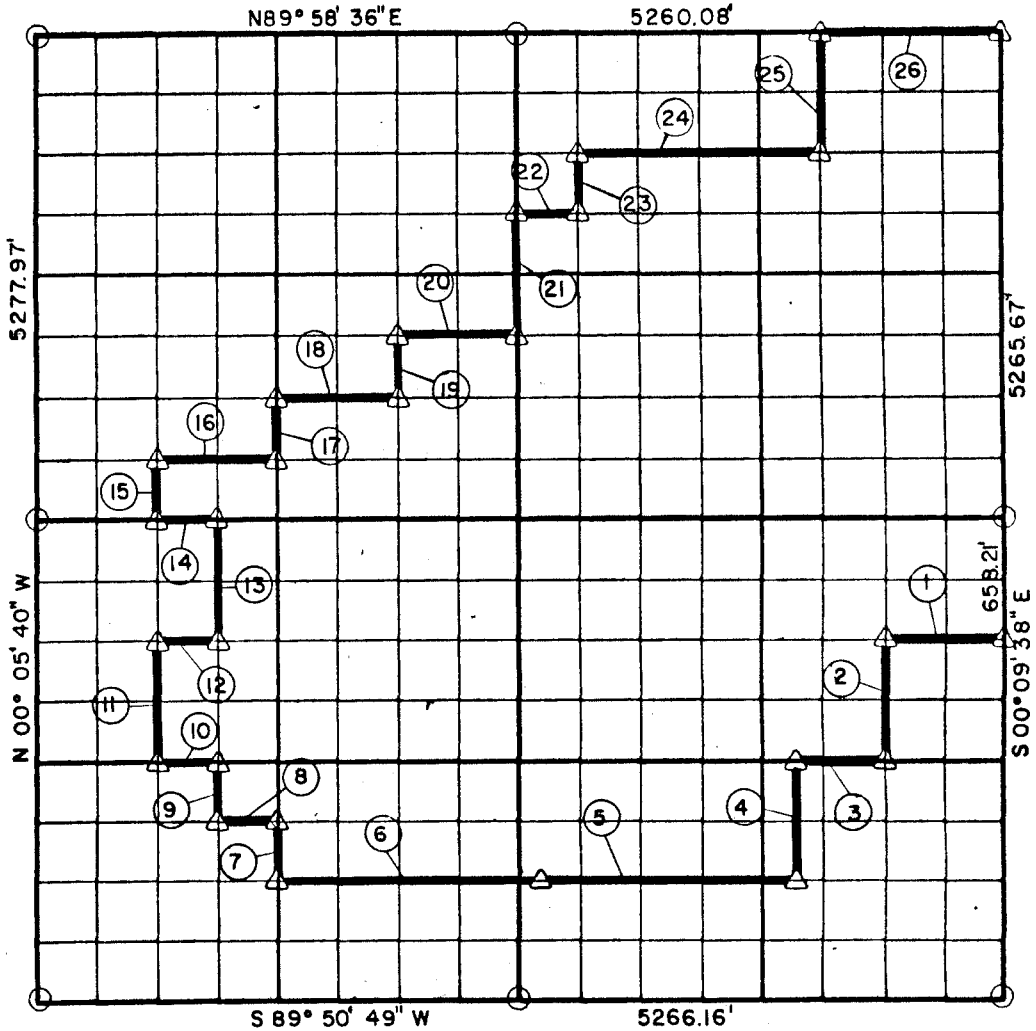


**PARTIAL BOUNDARY SURVEYS**  
**AREA "B"**  
**WISTER RESERVOIR**  
**POTEAU RIVER, OKLAHOMA**

Performed Under Contract Number DACW 56-71-C-0115

**SECTION 7, T-5-N R-22-E LATIMER COUNTY**



Course No.	Distance	Bearing	Course No.	Distance	Bearing
(1)	657.98'	S 89°53'50\" W	(15)	329.73'	N 00°06'10\" W
(2)	658.40'	S 00°09'06\" E	(16)	657.84'	N 89°55'18\" E
(3)	493.56'	S 89°52'49\" W	(17)	329.64'	N 00°06'39\" W
(4)	658.54'	S 00°08'45\" E	(18)	657.79'	N 89°55'46\" E
(5)	1398.62'	S 89°51'49\" W	(19)	329.55'	N 00°07'09\" W
(6)	1398.62'	S 89°51'49\" W	(20)	657.75'	N 89°56'15\" E
(7)	329.68'	N 00°06'39\" W	(21)	658.93'	N 00°07'39\" W
(8)	329.06'	S 89°52'19\" W	(22)	328.83'	N 89°57'11\" E
(9)	329.73'	N 00°06'25\" W	(23)	329.42'	N 00°07'54\" W
(10)	329.04'	S 89°52'49\" W	(24)	1315.21'	N 89°57'39\" E
(11)	659.46'	N 00°06'10\" W	(25)	658.48'	N 00°08'53\" W
(12)	328.99'	N 89°53'50\" E	(26)	986.27'	N 89°58'36\" E
(13)	659.46'	N 00°06'25\" W			
(14)	328.95'	S 89°54'50\" W			

Book No. I-167

Date: JUNE, 1971

△ Monument

□ Original Corner

○ Iron Pin

I, George L. Munde, a Registered Land Surveyor, do hereby certify that the above plot is a true and accurate survey of Section 7, T-5-N, R-22-E as made under my supervision.

*George L. Munde*  
**GEORGE L. MUNDE**  
 Reg. Land Surveyor L.S. 587