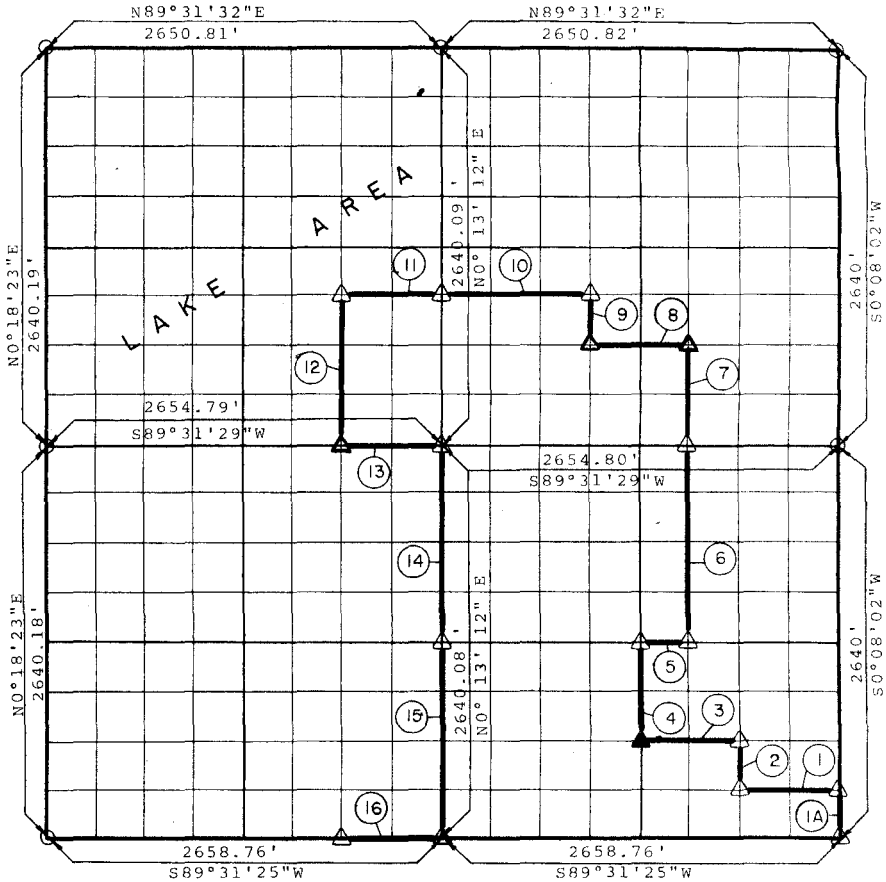


PARTIAL BOUNDARY SURVEYS
WISTER LAKE
POTEAU RIVER, OKLAHOMA

Performed Under Contract Number DACW56-72-C-0122

SEC. 13 T 5 N R 23 E COUNTY LE FLORE



Course No.	Distance	Bearing
1-A	330.00	N 0° 08' 02\"E
1	664.56	S89° 31' 25\"W
2	330.00	N 0° 09' 19\"E
3	664.44	S89° 31' 26\"W
4	660.01	N 0° 10' 37\"E
5	332.10	N89° 31' 27\"E
6	1320.02	N 0° 09' 58\"E
7	660.01	N 0° 09' 58\"E
8	663.45	S89° 31' 30\"W
9	330.01	N 0° 11' 19\"E
10	994.98	S89° 31' 30\"W
11	663.32	S89° 31' 30\"W
12	990.03	S 0° 14' 29\"W
13	663.70	N89° 31' 29\"E
14	1320.04	S 0° 13' 12\"W
15	1320.04	S 0° 13' 12\"W
16	664.70	S89° 31' 25\"W

Course No.	Distance	Bearing

△ Original cap reset in original pillar
 ▲ New cap set in original pillar
 Date Aug. 31, 1972

CERTIFICATE OF SURVEY Field Book No. 1-201
 I HEREBY CERTIFY THAT THE ABOVE PLAT IS A TRUE AND CORRECT REPRESENTATION OF THE SURVEY MADE IN SECTION 13, T 5 N, R 23 E, LE FLORE COUNTY, OKLAHOMA.

BEAVERS & BRAWLEY, INC.
CONSULTING ENGINEERS

Under the Supervision of

U.S. ARMY ENGINEER DISTRICT, TULSA
CORPS OF ENGINEERS

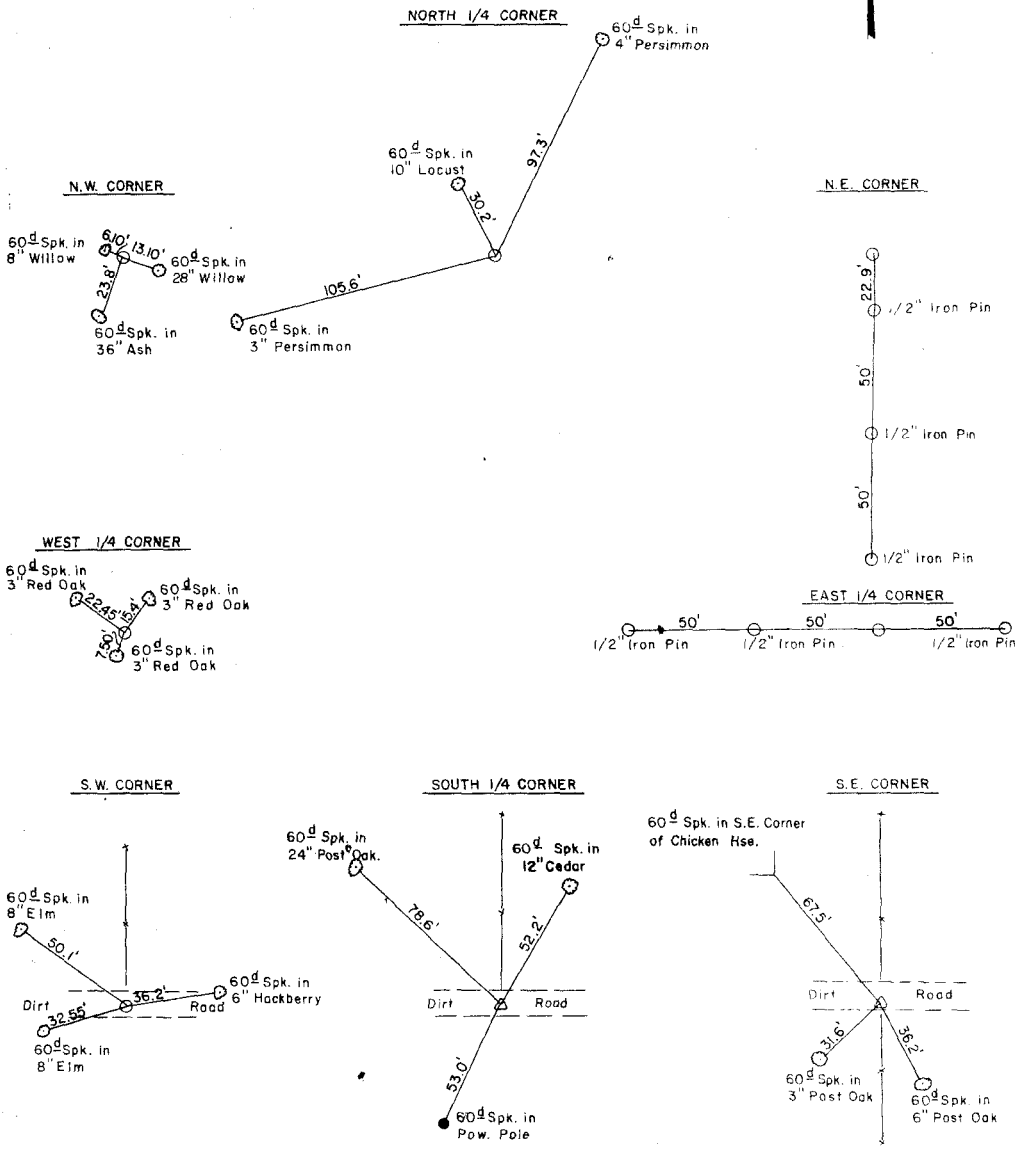
LEGEND

- △ MONUMENT
- ORIGINAL CORNER
- IRON PIN

Christy S. Smith
REGISTERED L.S. NO. 393

WISTER LAKE
POTEAU RIVER, OKLAHOMA

SECTION AND QUARTER SECTION CORNER
REFERENCES FOR
SEC.-13, T 5 N, R23 E COUNTY-LE FLORE



Scale: 1" = 50'
Date: Aug. 31, 1972
Field Book No. 1-201

- LEGEND**
- △ Monument
 - Original Corner
 - Iron Pin