

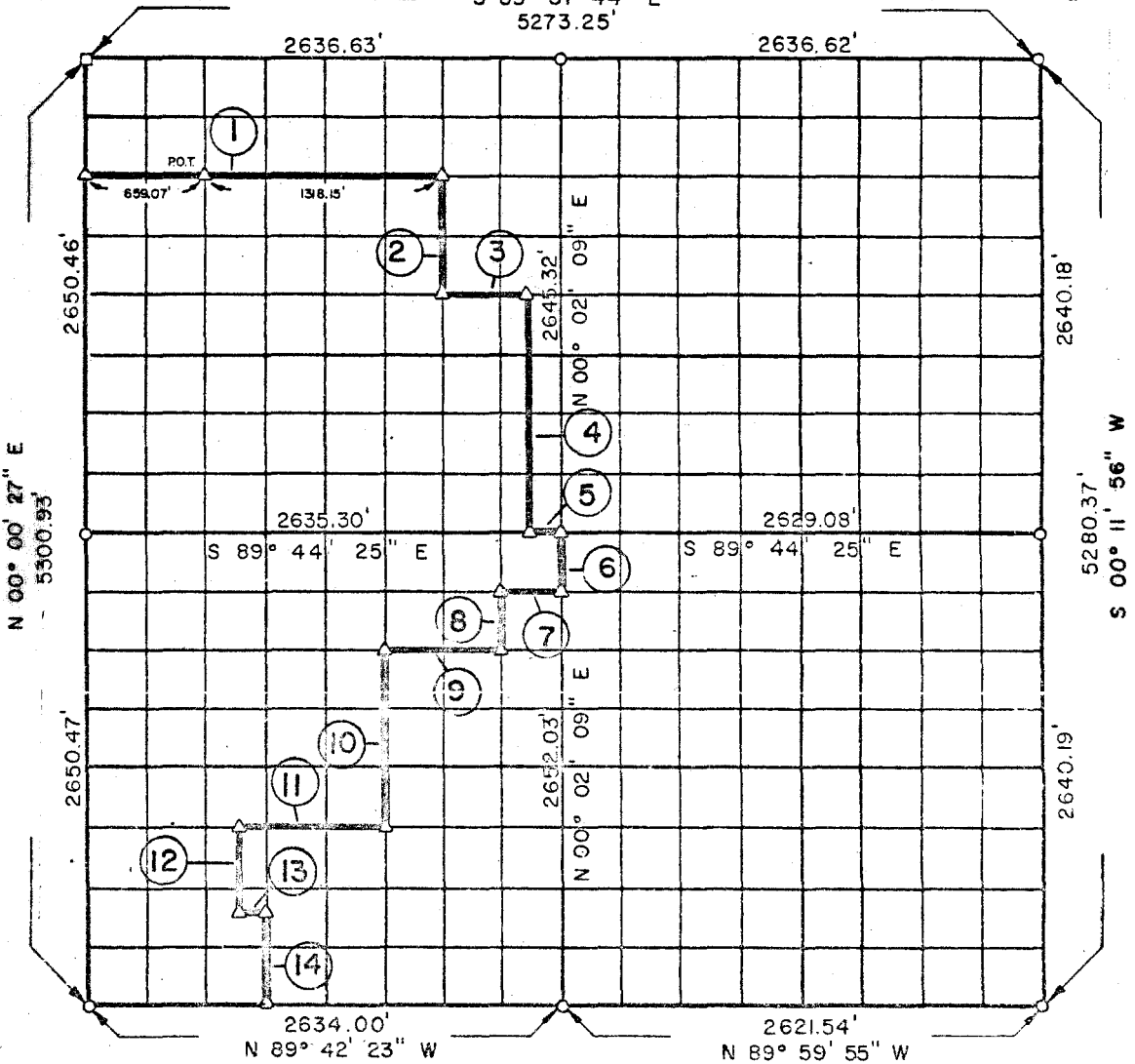
**PARTIAL BOUNDARY SURVEYS
WISTER LAKE**

POTEAU RIVER, OKLAHOMA

Performed Under Contract Number DACW 56-72-C-0116

SEC. 14 , T 5 N, R 23 E LEFLORE COUNTY

S 89° 37' 44" E
5273.25'



Course No.	Distance	Bearing	Course No.	Distance	Bearing
			11	823.28'	N 89° 43' 09" W
			12	497.05'	S 00° 00' 59" W
1	1977.22'	S 89° 39' 24" E	13	164.64'	S 89° 42' 46" E
2	661.66'	S 00° 01' 44" W	14	497.07'	S 00° 01' 05" W
3	494.24'	S 89° 41' 05" E			
4	1322.82'	S 00° 02' 02" W			
5	164.71'	S 89° 44' 25" E			
6	331.50'	S 00° 02' 09" W			
7	329.39'	N 89° 44' 10" W			
8	331.48'	S 00° 01' 55" W			
9	658.74'	N 89° 43' 55" W			
10	994.29'	S 00° 01' 30" W			

Field Book No. I-209

Date: AUGUST, 1972

MALENEE-PLUMMER-BRUNNETT
ARCHITECTS-ENGINEERS-SURVEYORS
2504 E. 14th Pl., Tulsa, Okla., 74104, Tel. (918) 939-2251

CERTIFICATE OF SURVEY
I HEREBY CERTIFY THAT THE ABOVE PLAT IS A TRUE AND CORRECT REPRESENTATION OF THE SURVEY MADE IN SECTION 14, T 5 N, R 23 E, LEFLORE COUNTY, OKLAHOMA.

LEGEND

- MONUMENT
- ORIGINAL CORNER
- IRON PIN

Under the Supervision of

**U.S. ARMY ENGINEER DISTRICT, TULSA
CORPS OF ENGINEERS**

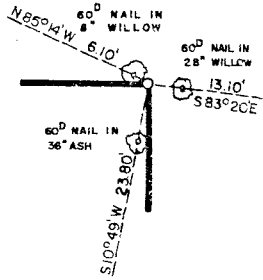
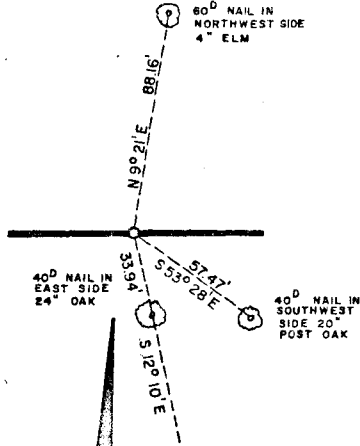
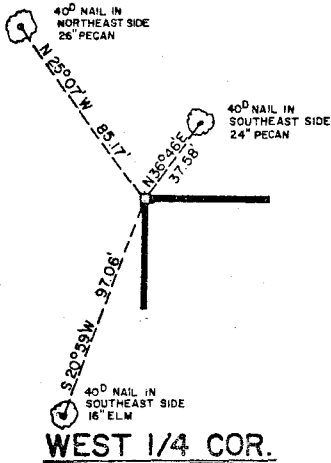
[Signature]
ENGINEER IN CHARGE

SECTION AND QUARTER SECTION CORNER
REFERENCES FOR
SEC. 14, T 5 N, R 23 E, LEFLORE COUNTY

N.W. CORNER

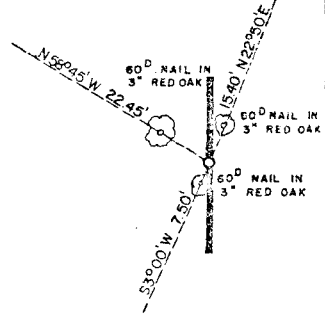
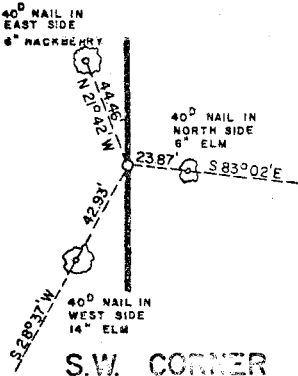
NORTH 1/4 COR.

N.E. CORNER



WEST 1/4 COR.

EAST 1/4 COR.

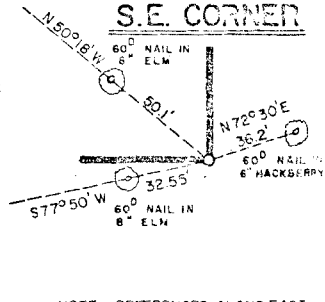
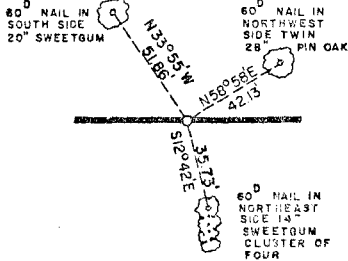
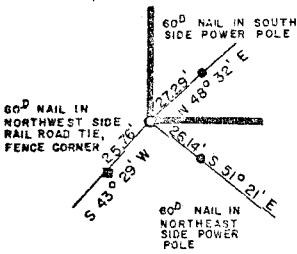


SCALE: 1" = 50'

S.W. CORNER

SOUTH 1/4 COR.

S.E. CORNER



NOTE: REFERENCES ALONG EAST LINE OF SECTION-14 FURNISHED BY OTHERS.

MALENGEE-PLUMMER-CRUMMETT
ARCHITECTS-ENGINEERS-SURVEYORS
2504 E. 14th Pl., Tulsa, Okla., 74104, Tel. (918) 939-2251

FIELD BOOK NO. 1-209

DATE: AUGUST, 1972

- LEGEND**
- A MONUMENT
 - ORIGINAL CORNER
 - IRON PIN

Under the Supervision of
U.S. ARMY ENGINEER DISTRICT, TULSA
CORPS OF ENGINEERS

