

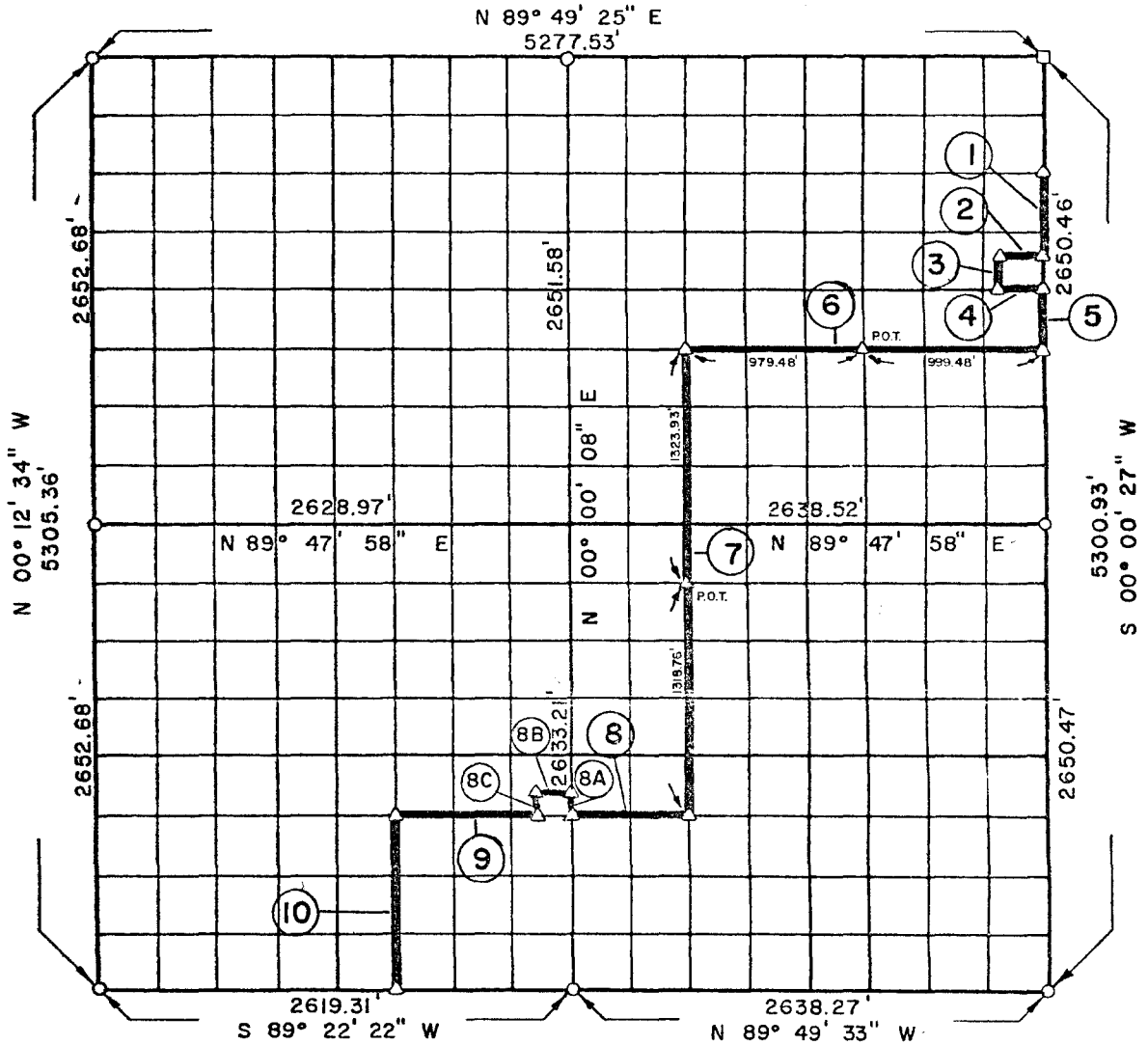
PARTIAL BOUNDARY SURVEY

WISTER LAKE

POTEAU RIVER, OKLAHOMA

Performed Under Contract Number DACW 56-72-C-0116

SEC. 15, T 5 N, R 23 E LEFLORE COUNTY



Course No.	Distance	Bearing	Course No.	Distance	Bearing
①	453.90'	S 00° 00' 27" W	* 8A	96.30	N 00° 00' 08" E
②	208.71'	S 89° 48' 41" W	* 8B	245.77	S 89° 31' 59" W
③	208.71'	S 00° 00' 27" W	* 8C	99.81	S 15° 28' 21" E
④	208.71'	N 89° 48' 41" E			
⑤	331.31'	S 00° 00' 27" W			
⑥	1978.96'	S 89° 48' 31" W			
⑦	2642.69'	S 00° 00' 13" W			
⑧	659.59'	N 89° 57' 59" W			
⑨	764.46'	S 89° 31' 59" W			
⑩	990.19'	S 00° 04' 39" E			

Field Book No. I-210

Date: AUGUST, 1972

* REVISED OCT. 1978
C of E PARTY

MALERNEE-PLUMMER-BRUMMETT
ARCHITECTS-ENGINEERS-SURVEYORS
2504 E. 14th Pl., Tulsa, Okla., 74104, Tel. (918) 939-2251

CERTIFICATE OF SURVEY
I HEREBY CERTIFY THAT THE ABOVE PLAT IS A TRUE AND CORRECT REPRESENTATION OF THE SURVEY MADE IN SECTION 15, T 5 N, R 23 E, LEFLORE COUNTY, OKLAHOMA.

LEGEND

- ▲ MONUMENT
- ORIGINAL CORNER
- IRON PIN

Under the Supervision of

U.S. ARMY ENGINEER DISTRICT, TULSA
CORPS OF ENGINEERS

REGISTERED LAND SURVEYOR

