

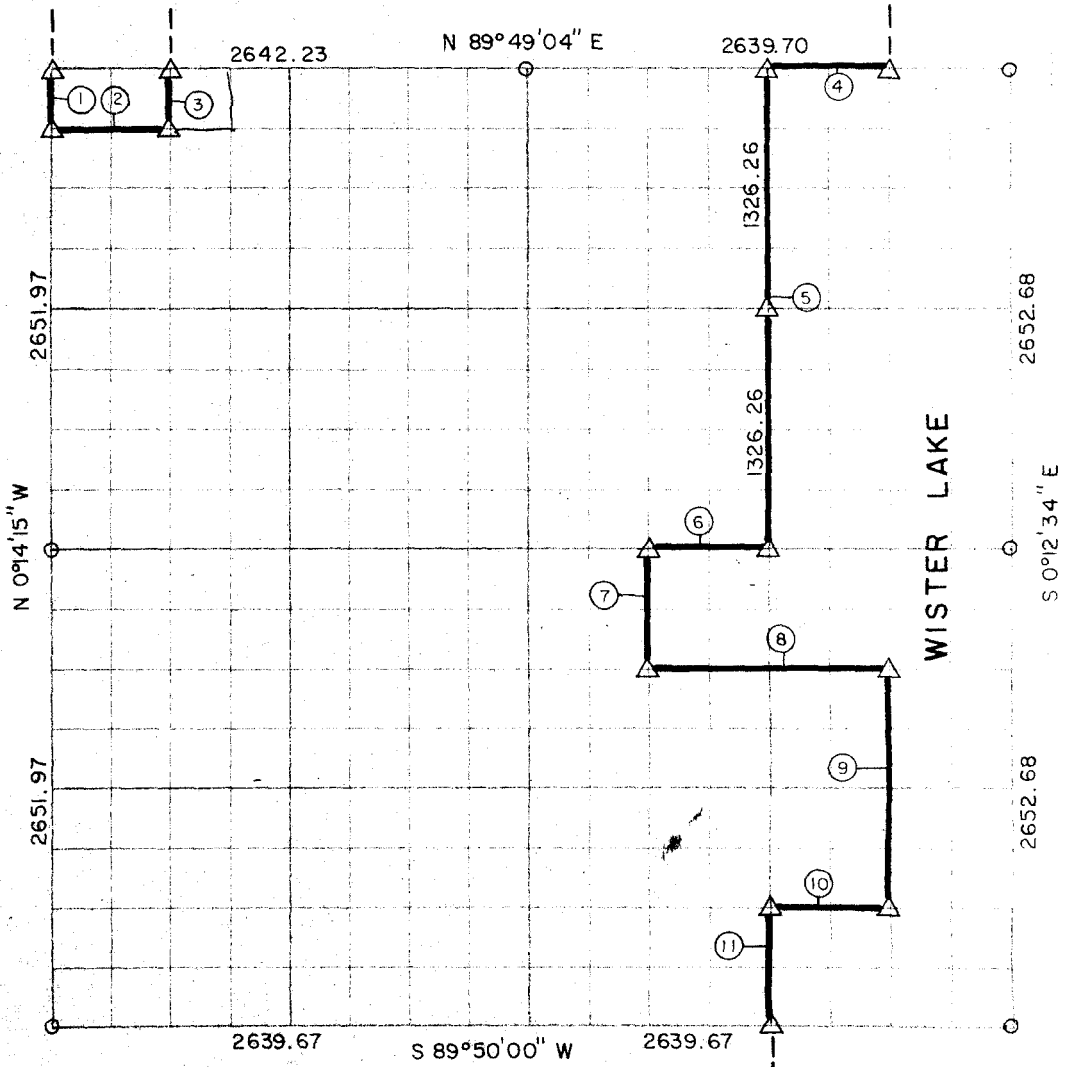
PARTIAL BOUNDARY SURVEYS
WISTER LAKE

POTEAU RIVER, OKLAHOMA

Performed Under Contract Number DACW 56-71-C-0207

SEC. 16, T 5 N, R 23 E

LEFLORE COUNTY



Course No.	Distance	Bearing	Course No.	Distance	Bearing
1	331.50	S 0°14'15" E			
2	990.78	N 89°49'07" E			
3	331.52	N 0°13'38" W			
4	659.92	S 89°49'04" W			
5	2652.52	S 0°12'35" E			
6	659.92	S 89°49'31" W			
7	663.10	S 0°12'35" E			
8	1319.84	N 89°49'38" E			
9	1326.29	S 0°12'35" E			
10	659.91	S 89°49'52" W			
11	663.12	S 0°12'35" E			

Field Book No. 1-190 Date, DEC. 1971

- LEGEND
- 1 MONUMENT
 - 2 ORIGINAL OWNER
 - 3 IRON PIN

THE ENGINEERING CONSULTANTS
Under the Supervision of
U.S. ARMY ENGINEER DISTRICT, TULSA
CORPS OF ENGINEERS

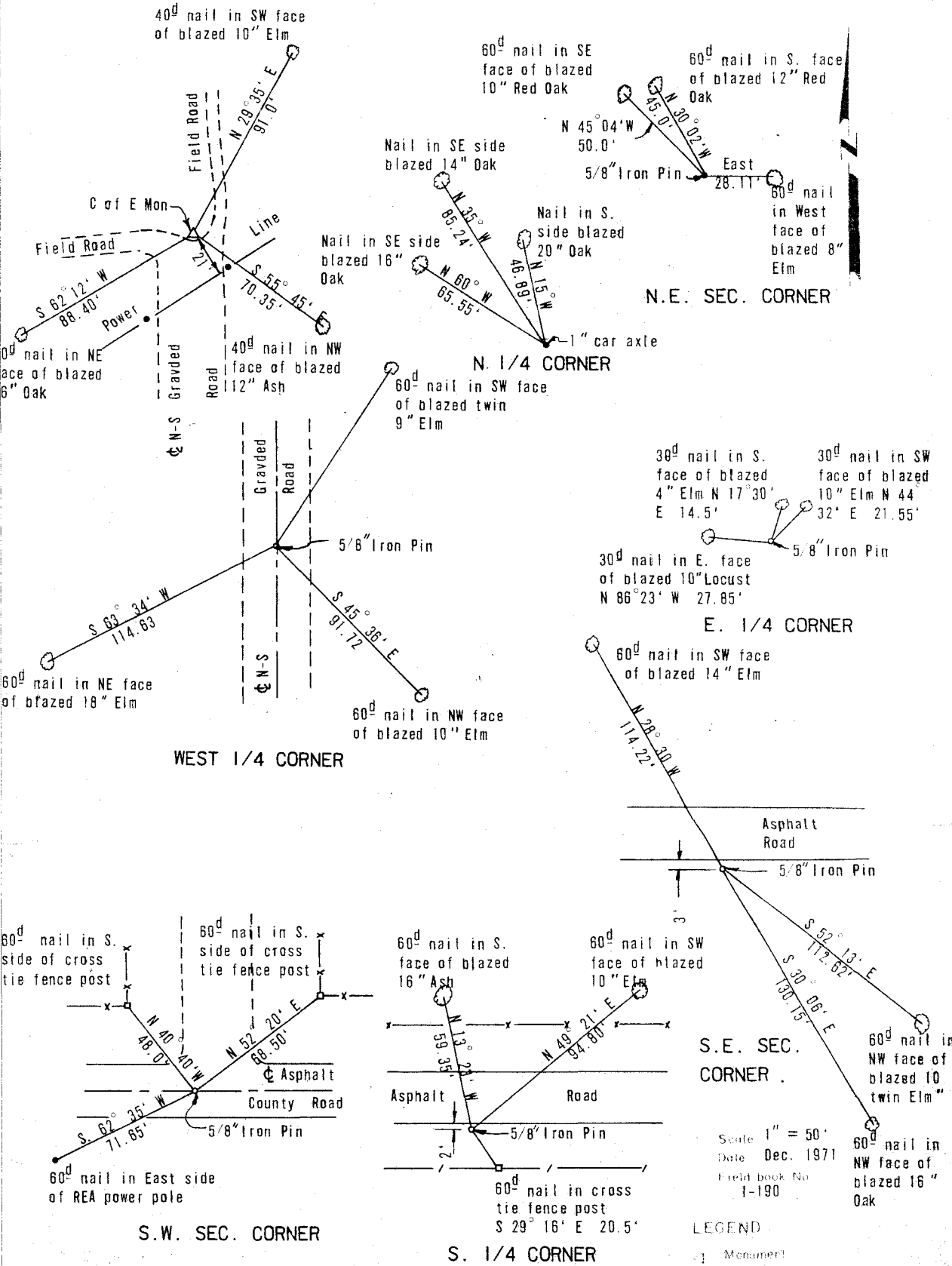
Robert L. ...
[Signature]

WISTER LAKE

ROTEAU RIVER, OKLAHOMA

SECTION AND QUARTER SECTION CORNER REFERENCES FOR

SEC. 16 T 5 N, R 23 E LEFLORE COUNTY



Scale 1" = 50'
 Date Dec. 1971
 Field Book No. I-190

LEGEND
 [Symbol] Monument
 [Symbol] Original Corner
 [Symbol] Iron Pin