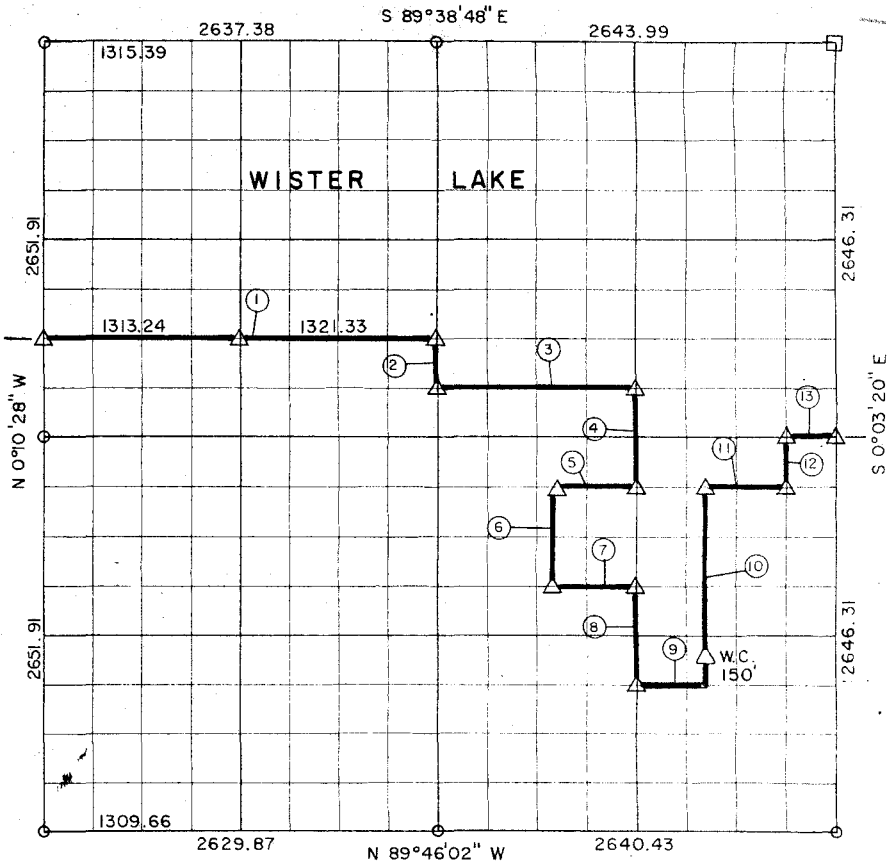


PARTIAL BOUNDARY SURVEYS
 WISTER LAKE
 POTEAU RIVER, OKLAHOMA
 Performed Under Contract Number DACW 56-71 -C- 0207
 SEC. 18 , T 5 N, R 23 E LEFLORE COUNTY



Course No.	Distance	Bearing	Course No.	Distance	Bearing
1	2634.57	S 89°41'31" E	11	495.38	S 89°42'52" E
2	331.14	S 0°05'37" E	12	330.83	N 0°03'37" W
3	1321.22	S 89°41'58" E	13	330.28	S 89°42'25" E
4	661.93	S 0°04'28" E			
5	495.38	N 89°42'52" W			
6	662.06	S 0°04'53" E			
7	495.30	S 89°43'46" E			
8	661.93	S 0°04'28" E			
9	495.23	S 89°44'40" E			
10	1323.61	N 0°04'07" W			

Field Book No. I-192 Date. DEC. 1971

THE ENGINEERING CONSULTANTS

Under the Supervision of

U.S. ARMY ENGINEER DISTRICT, TULSA
 CORPS OF ENGINEERS

CERTIFICATE OF SURVEY

I HEREBY CERTIFY THAT THE ABOVE PLAT IS A TRUE AND CORRECT REPRESENTATION OF THE SURVEY MADE BY ME UNDER CONTRACT NUMBER DACW 56-71 -C- 0207, LEFLORE COUNTY, OKLAHOMA.

Robert L. Miller

LEGEND

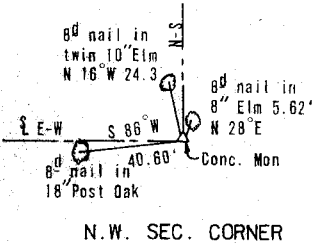
- A. MONUMENT
- B. ORIGINAL CORNER
- C. IRON PIN

WISTER LAKE

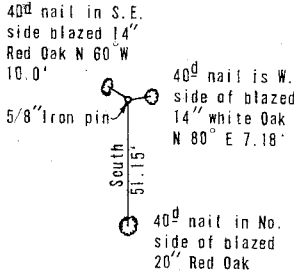
POTEAU RIVER, OKLAHOMA

SECTION AND QUARTER SECTION CORNER
REFERENCES FOR

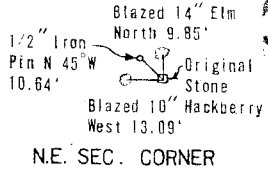
SEC. 18, T5 N, R23 E LEFLORE COUNTY



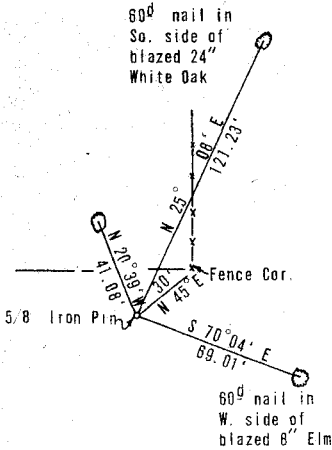
N.W. SEC. CORNER



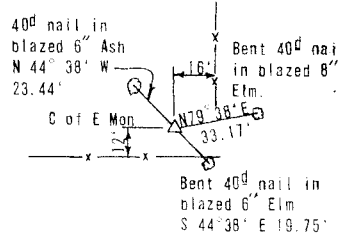
N. 1/4 CORNER



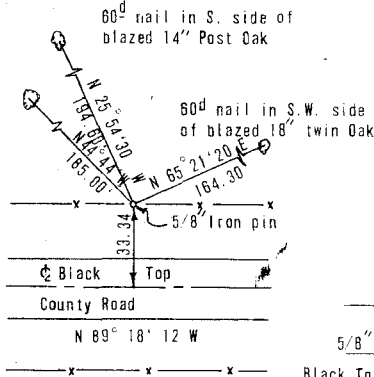
N.E. SEC. CORNER



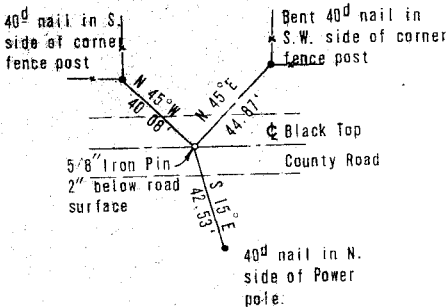
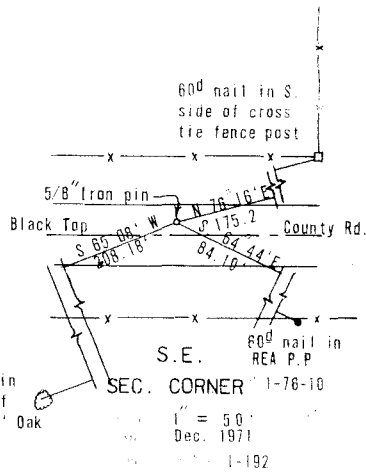
W. 1/4 CORNER



E. 1/4 CORNER



S. 1/4 CORNER



S.W. SEC. CORNER