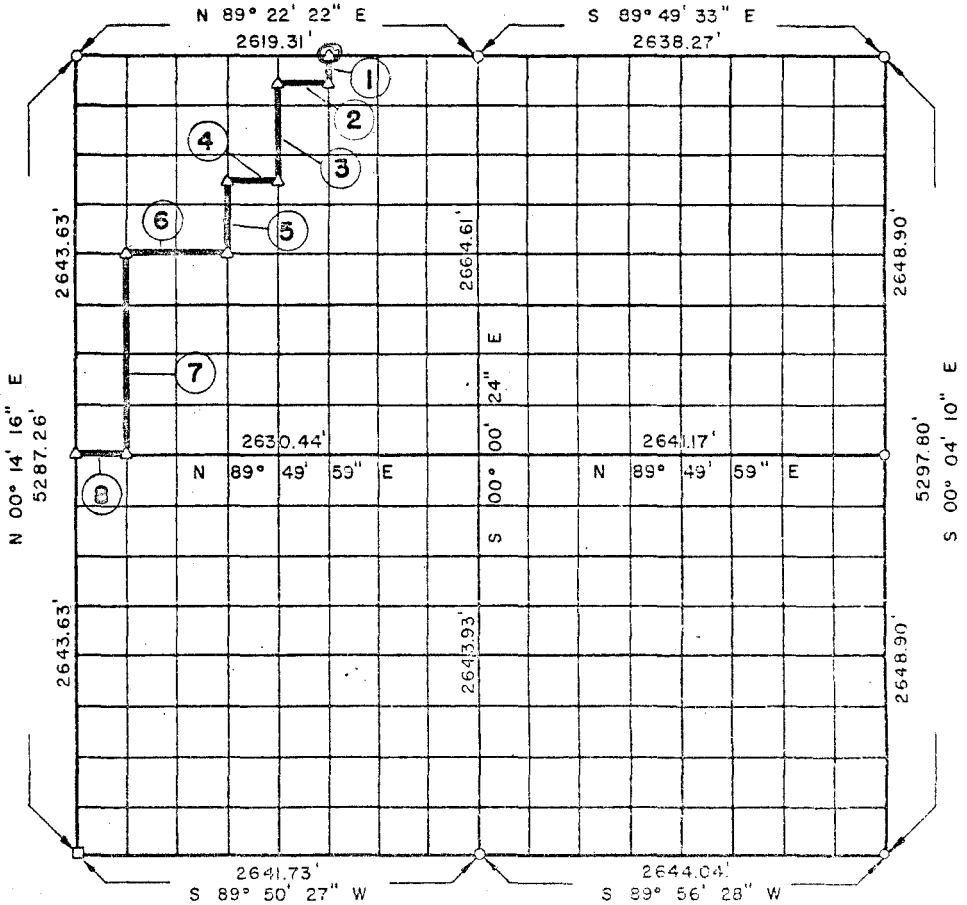


**PARTIAL BOUNDARY SURVEYS
WISTER LAKE
POTEAU RIVER, OKLAHOMA**

Performed Under Contract Number DACW 56-72-C-0116

SEC. 22 , T 5 N, R 23 E LEFLORE COUNTY



Course No.	Distance	Bearing	Course No.	Distance	Bearing
①	166.05'	S 00° 05' 04" W			
②	327.51'	S 89° 24' 06" W			
③	626.35'	S 00° 06' 54" W			
④	327.83'	S 89° 29' 16" W			
⑤	534.17'	S 00° 03' 44" W			
⑥	656.21'	S 89° 36' 12" W			
⑦	1323.12'	S 00° 12' 25" W			
⑧	328.81'	S 89° 49' 59" W			

Field Book No. I-211

Date: AUGUST, 1972

MALONEE-PLUMER-DRUMMETT
ARCHITECTS-ENGINEERS-SURVEYORS
2504 E. 14th Pl., Tulsa, Okla., 74104, Tel. (581) 933-2251

CERTIFICATE OF SURVEY
LEFLORE COUNTY, OKLAHOMA
I, _____, COUNTY CLERK, DO HEREBY CERTIFY THAT THE ABOVE PLAT IS A TRUE AND CORRECT REPRESENTATION OF THE SURVEY AND IS FILED THIS 22ND DAY OF AUGUST, 1972, IN LEFLORE COUNTY, OKLAHOMA.

Under the Supervision of

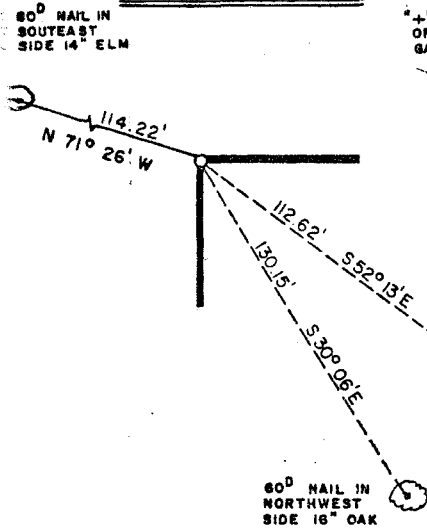
**U.S. ARMY ENGINEER DISTRICT, TULSA
CORPS OF ENGINEERS**

LEGEND

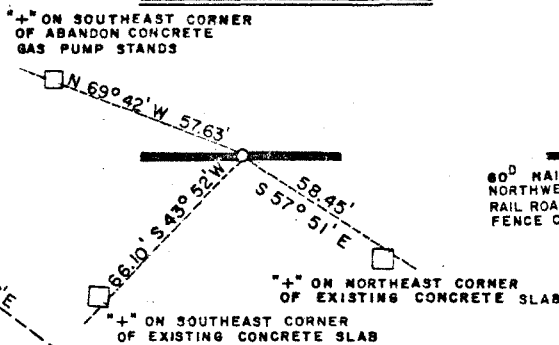
- A MONUMENT
- C ORIGINAL CORNER
- D BENCH MARK

SECTION AND QUARTER SECTION CORNER
REFERENCES FOR
SEC. 22, T 5 N, R 23 E, LEFLORE COUNTY

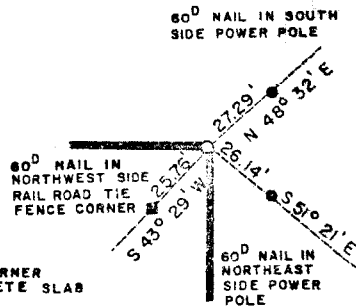
N.W. CORNER



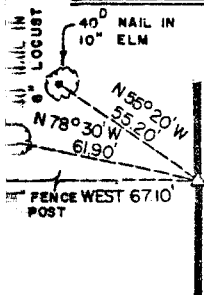
NORTH 1/4 COR.



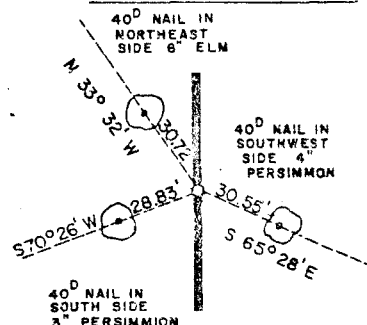
N.E. CORNER



WEST 1/4 COR.

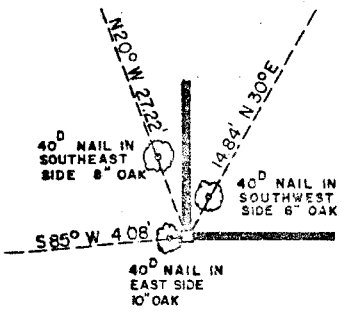


EAST 1/4 COR.

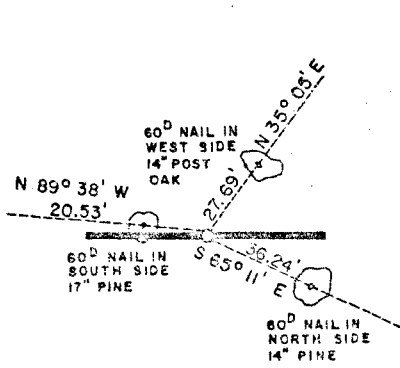


SCALE: 1" = 50'

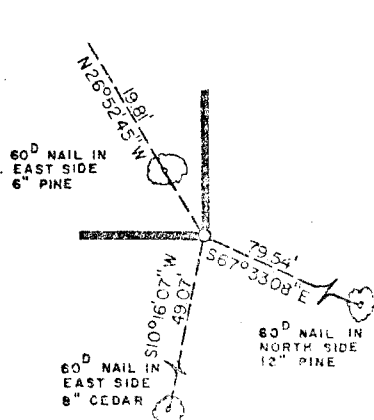
S.W. CORNER



SOUTH 1/4 COR.



S.E. CORNER



MALEENEE-FLUMMER-BRUNNETT
ARCHITECTS-ENGINEERS-SURVEYORS
2504 E. 41th Pl, Tulsa, OK 74104, Tel. (918) 939-2251

FIELD BOOK NO. 1-211
DATE: AUGUST, 1972

LEGEND

- A MONUMENT
- ORIGINAL CORNER
- IRON PIN

Under the Supervision of
U.S. ARMY ENGINEER DISTRICT, TULSA
CORPS OF ENGINEERS