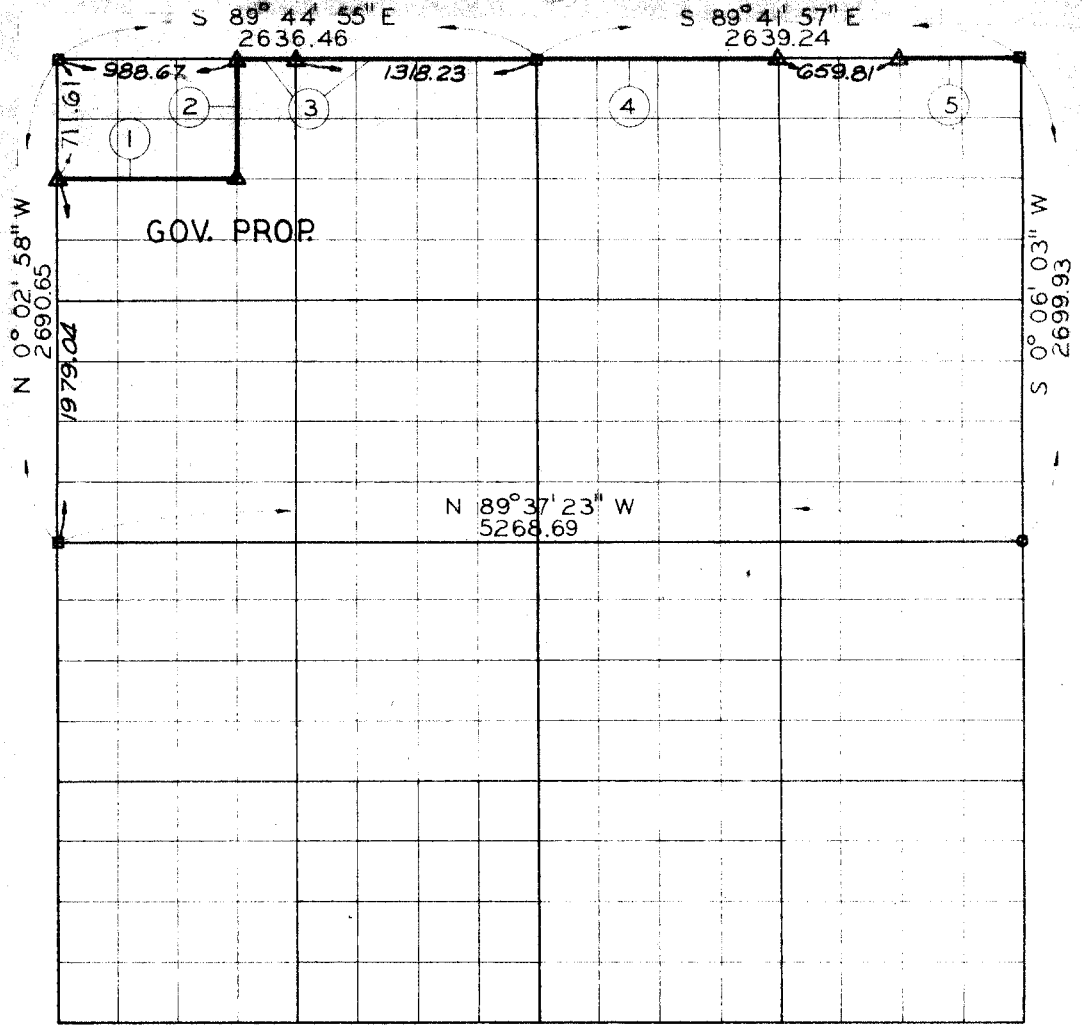


SEC. 2 T-5-N-R-23 E COUNTY LE FLORE



| COURSE NUMBER | DISTANCE | BEARING | COURSE NUMBER | DISTANCE | BEARING |
|---------------|----------|-------------|---------------|----------|---------|
| 1. | 988.47 | S89°42'58"E | | | |
| 2. | 710.89 | N00°02'16"W | | | |
| 3. | 1647.79 | S89°44'55"E | | | |
| 4. | 1319.62 | S89°41'57"E | | | |
| 5. | 659.81 | S89°41'57"E | | | |

Field Book No. 1-146 December 8, 1969

I, Robert C. Poe, a Registered Professional Engineer and a Registered Land Surveyor, do hereby certify that the above plat is a true and accurate survey of Section 2, T-5-N, R-23-E as made under my supervision.

LEGEND

- △ MONUMENT
- ORIGINAL STONE
- IRON PIN

Robert C. Poe
 Reg. Prof. Engr. No. 7387
 Reg. Land Surveyor No. LS 600