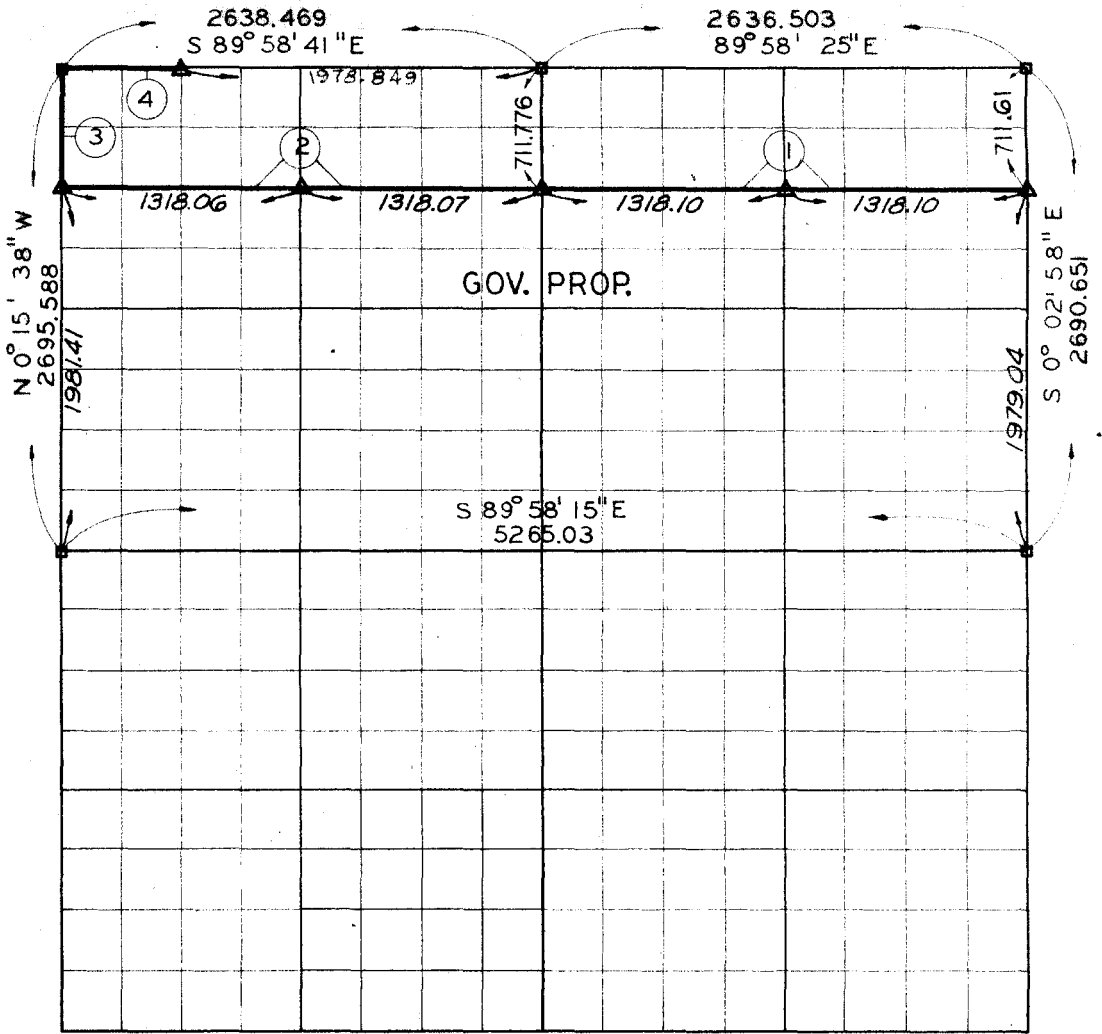


SEC. 3 - T - 5 - N - R - 23 - E COUNTY LE FLORE



COURSE NUMBER	DISTANCE	BEARING	COURSE NUMBER	DISTANCE	BEARING
1.	2636.20	S89°59'51"W			
2.	2636.13	S89°59'43"W			
3.	714.18	N00°15'38"W			
4.	659.62	S89°58'41"E			

Field Book No. 1-145 December 8, 1969

I, Robert C. Poe, a Registered Professional Engineer and a Registered Land Surveyor, do hereby certify that the above plat is a true and accurate survey of Section 3, T-5-N, R-23-E as made under my supervision.

LEGEND

- △ MONUMENT
- ORIGINAL STONE
- IRON PIN



Robert C. Poe

Robert C. Poe
 Reg. Prof. Engr. No. 7387
 Reg. Land Surveyor No. LS 602