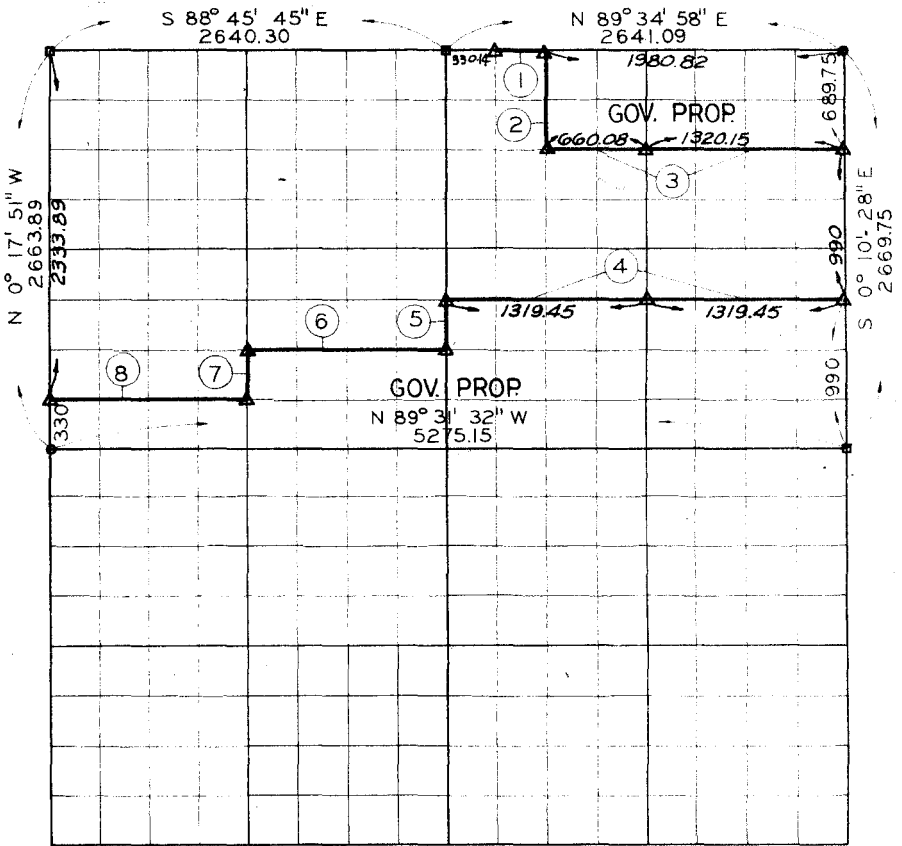


SEC. 5 T-5-N R-23-E COUNTY LE FLORE



COURSE NUMBER	DISTANCE	BEARING	COURSE NUMBER	DISTANCE	BEARING
1.	330.13	N89°34'58"E			
2.	659.17	S00°14'14"E			
3.	1980.23	S89°31'35"E			
4.	2638.90	N89°49'21"W			
5.	330.00	S00°15'23"E			
6.	1319.13	N89°10'09"W			
7.	330.00	S00°16'37"E			
8.	1318.96	N89°17'18"W			

Field Book No. 1-143 December 8, 1969

I, Robert C. Poe, a Registered Professional Engineer and a Registered Land Surveyor, do hereby certify that the above plat is a true and accurate survey of Section 5, T-5-N, R-23-E as made under my supervision.

LEGEND

- △ MONUMENT
- ORIGINAL STONE
- IRON PIN

Robert C. Poe
 Reg. Prof. Engr. No 7387
 Reg. Land Surveyor No. LS 602