

PARTIAL BOUNDARY SURVEYS

WISTER LAKE

POTEAU RIVER, OKLAHOMA

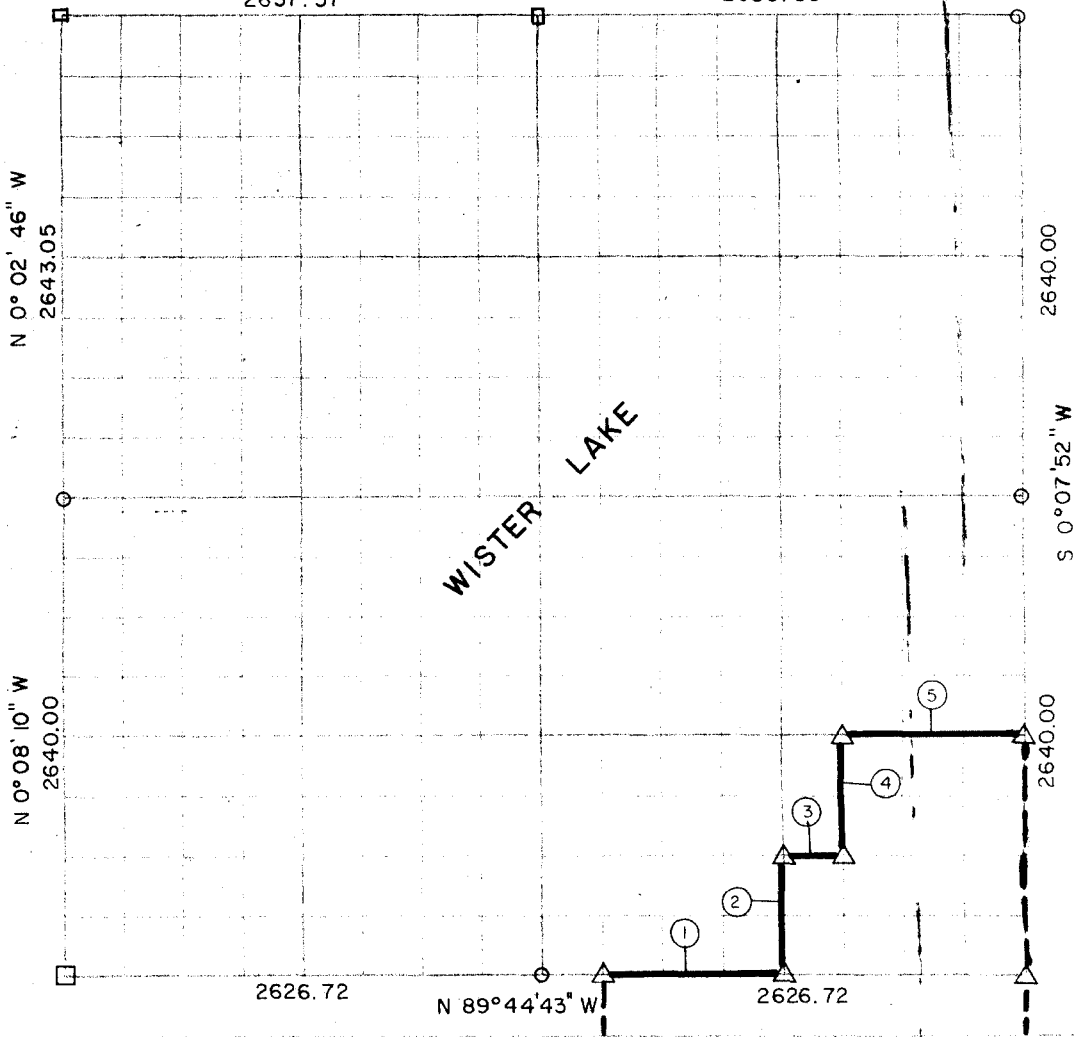
Performed Under Contract Number DACW 56-71-C-0207

SEC. 8, T 5 N, R 23 E

LEFLORE COUNTY

S 89° 41' 46" E  
2637.57

S 89° 43' 49" E  
2636.36



Course No.	Distance	Bearing	Course No.	Distance	Bearing
1	985.02	S 89° 44' 43" E			
2	660.00	N 0° 04' 24" E			
3	328.55	S 89° 44' 44" E			
4	660.00	N 0° 03' 55" E			
5	986.23	S 89° 44' 44" E			

Field Book No. 1-188

Date DEC. 1971

DESIGNED

DRAWN

CHECKED

DATE

THE ENGINEERING CONSULTANTS

Under the Supervision of

U.S. ARMY ENGINEER DISTRICT, TULSA  
CORPS OF ENGINEERS

APPROVED FOR THE DISTRICT  
BY THE DISTRICT ENGINEER  
DATE

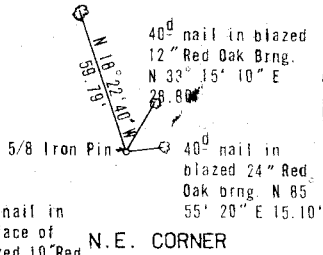
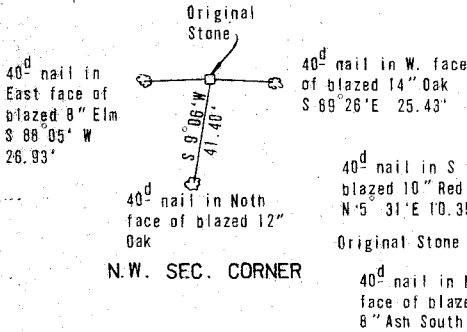
8 5 23  
*Robert H. McLaughlin*

**WISTER LAKE**  
 POTEAU RIVER, OKLAHOMA  
**SECTION AND QUARTER SECTION CORNER**  
**REFERENCES FOR**

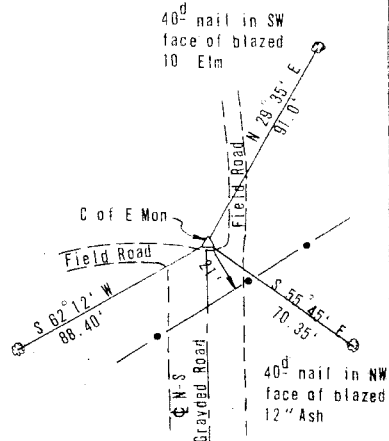
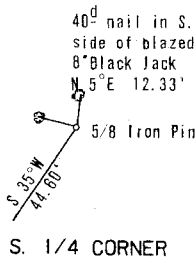
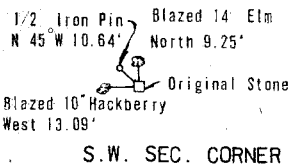
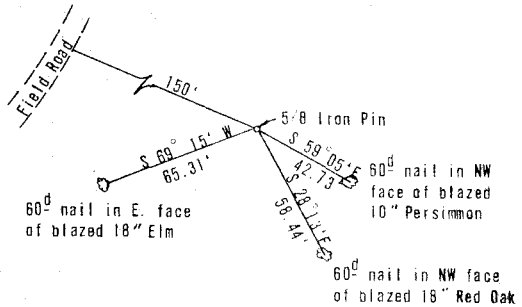
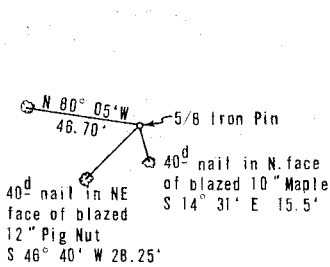
**SEC. 8, T5 N, R23 E**

**LEFLORE COUNTY**

Bent 40<sup>d</sup> nail in  
 blazed 10" Elm



**N. 1/4 CORNER**



Scale: 1" = 50'  
 Date: Dec. 1971  
 Field book No: 1-188

**LEGEND**

- ◻ - Monument
- ◻ - Original Corner
- - Iron Pin