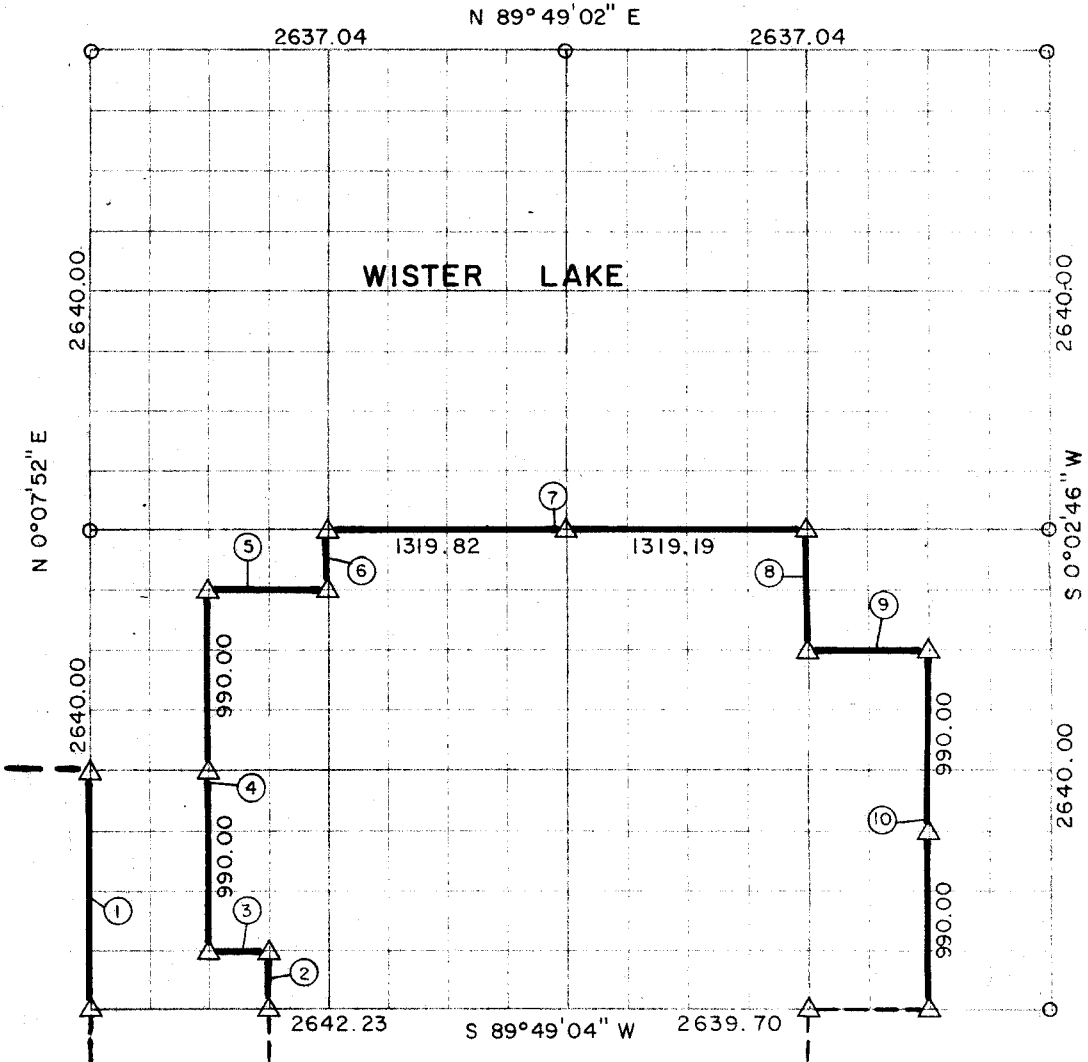


PARTIAL BOUNDARY SURVEYS
WISTER LAKE

POTEAU RIVER, OKLAHOMA

Performed Under Contract Number DACW 56-71-C-0207

SEC. 9 , T 5 N, R 23 E LEFLORE COUNTY



Course No.	Distance	Bearing	Course No.	Distance	Bearing
1	1320.00	S 0°07'52" W			
2	330.00	N 0°06'35" E			
3	330.16	S 89°49'04" W			
4	1980.00	N 0°07'01" E			
5	659.92	N 89°49'03" E			
6	330.00	N 0°06'10" E			
7	2639.01	N 89°49'03" E			
8	660.00	S 0°03'38" W			
9	659.67	N 89°49'03" E			
10	1980.00	S 0°03'11" W			

Field Book No. I-189

Date. DEC. 1971

LEGEND

- ⊠ MONUMENT
- ORIGINAL CORNER
- IRON PIN

THE ENGINEERING CONSULTANTS

Under the Supervision of

U.S. ARMY ENGINEER DISTRICT, TULSA
CORPS OF ENGINEERS

CERTIFICATE OF SURVEY

I HEREBY CERTIFY THAT THE ABOVE PLAT IS A TRUE AND CORRECT REPRESENTATION OF THE SURVEY MADE IN SECTION 9, T 5 N, R 23 E, LEFLORE COUNTY, OKLAHOMA

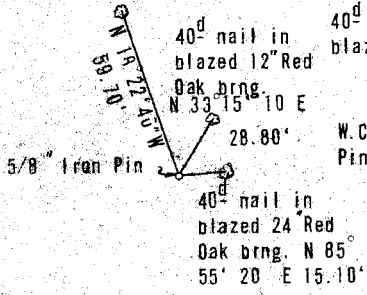
Robert L. McCoy

ROBERT L. MCCOY
REGISTERED SURVEYOR, OKLAHOMA

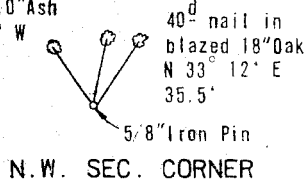
WISTER LAKE
 POTEAU RIVER, OKLAHOMA
SECTION AND QUARTER SECTION CORNER
REFERENCES FOR

SEC. 9, T5 N, R23 E LEFLORE COUNTY

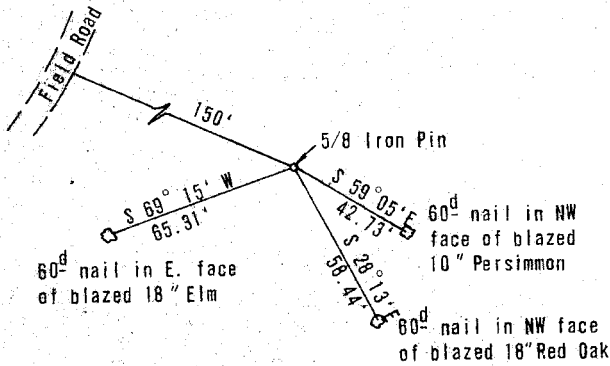
Bent 40^d nail
in blazed 10"
Elm



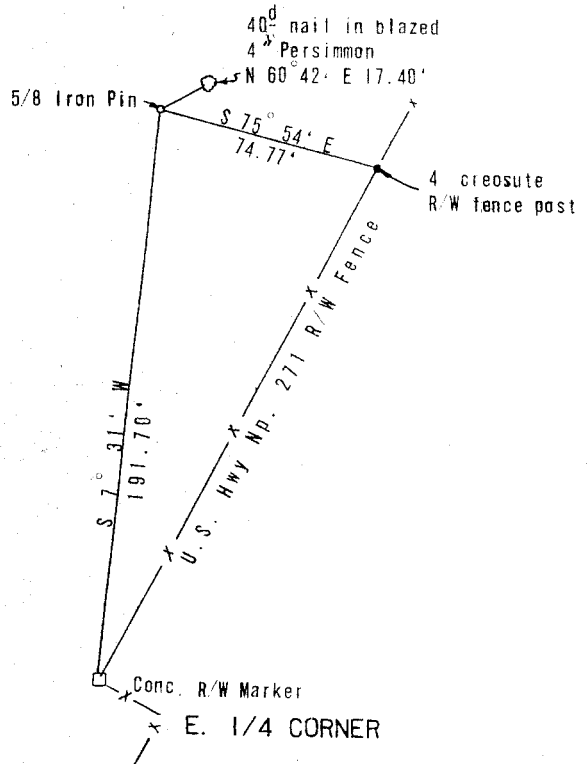
40^d nail in blazed 10" Elm N 8° 16' E 23.80'



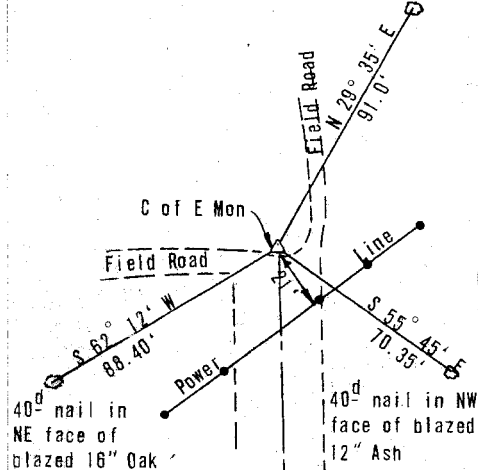
N.W. SEC. CORNER



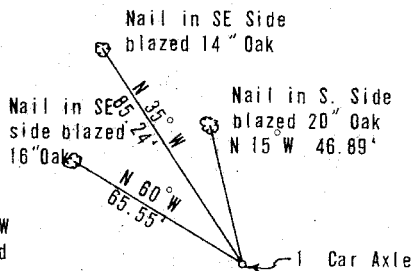
WEST 1/4 CORNER



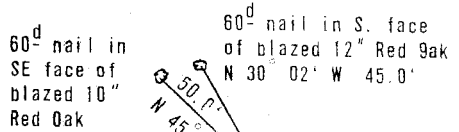
40^d nail in SW face of blazed 10" Elm



S.W. SEC. CORNER



S. 1/4 CORNER



S.E. SEC. CORNER

Scale 1" = 50'
 Date Dec. 1971
 Field Book No. 1-189

LEGEND

- - Monument
- - Survey Point
- - Boundary