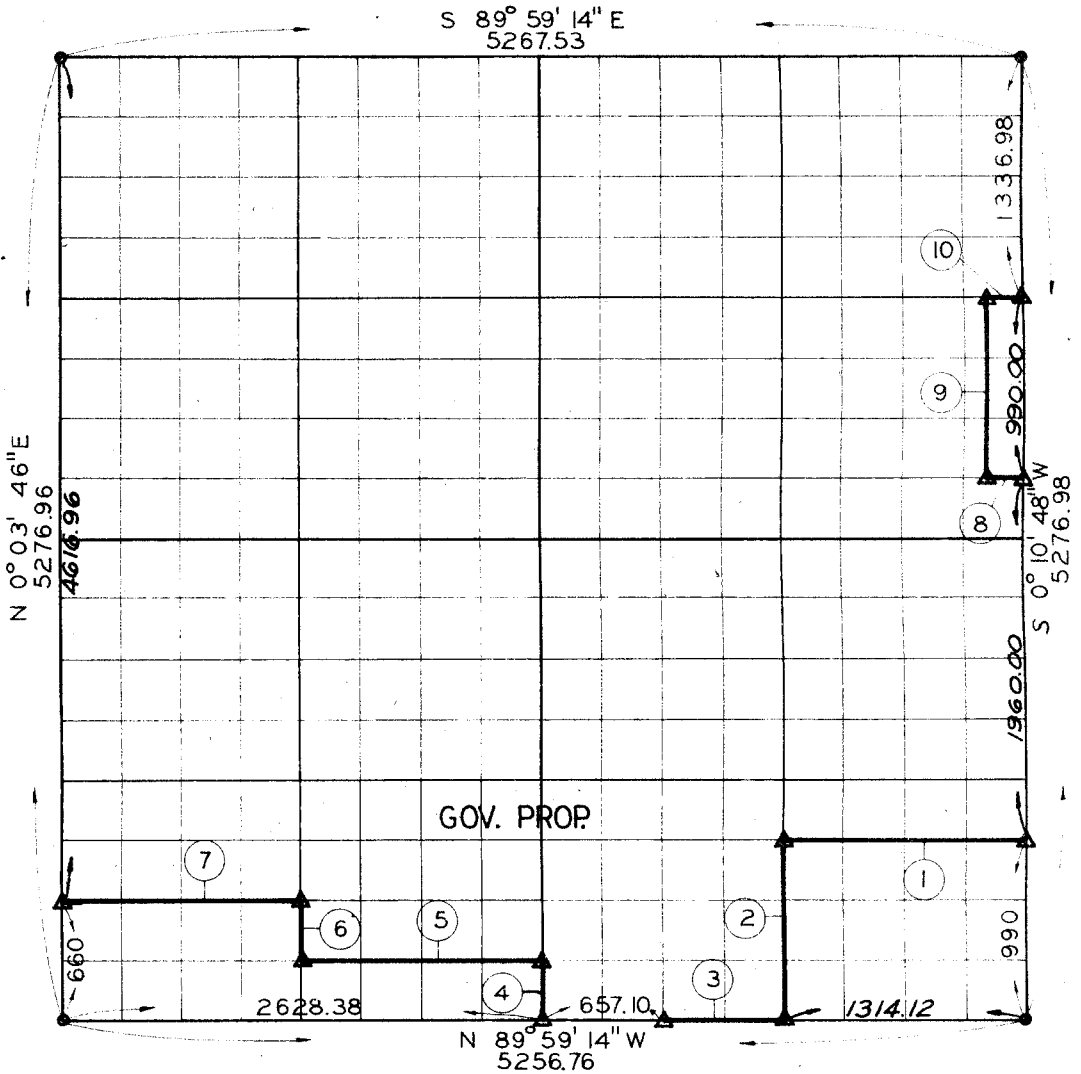


SEC. 12 T-5-N R-24-E COUNTY LE FLARE



COURSE NUMBER	DISTANCE	BEARING	COURSE NUMBER	DISTANCE	BEARING
1.	1314.70	N89°59'14\"W	6.	330.00	N00°05'32\"E
2.	990.00	S00°09'02\"W	7.	1314.53	N89°59'14\"W
3.	657.16	N89°59'14\"W	8.	210.00	N89°59'14\"W
4.	330.00	N00°07'17\"E	9.	990.00	N00°10'48\"E
5.	1314.36	N89°59'14\"W	10.	210.00	S89°59'14\"E

Field Book No. 1-151 December 8, 1969

I, Robert C. Poe, a Registered Professional Engineer and a Registered Land Surveyor, do hereby certify that the above plat is a true and accurate survey of Section 12, T-5-N, R-24-E as made under my supervision.

LEGEND

- △ MONUMENT
- ORIGINAL STONE
- IRON PIN

Robert C. Poe
 Reg. Prof. Engr. No. 7387
 Reg. Land Surveyor No. LS 602