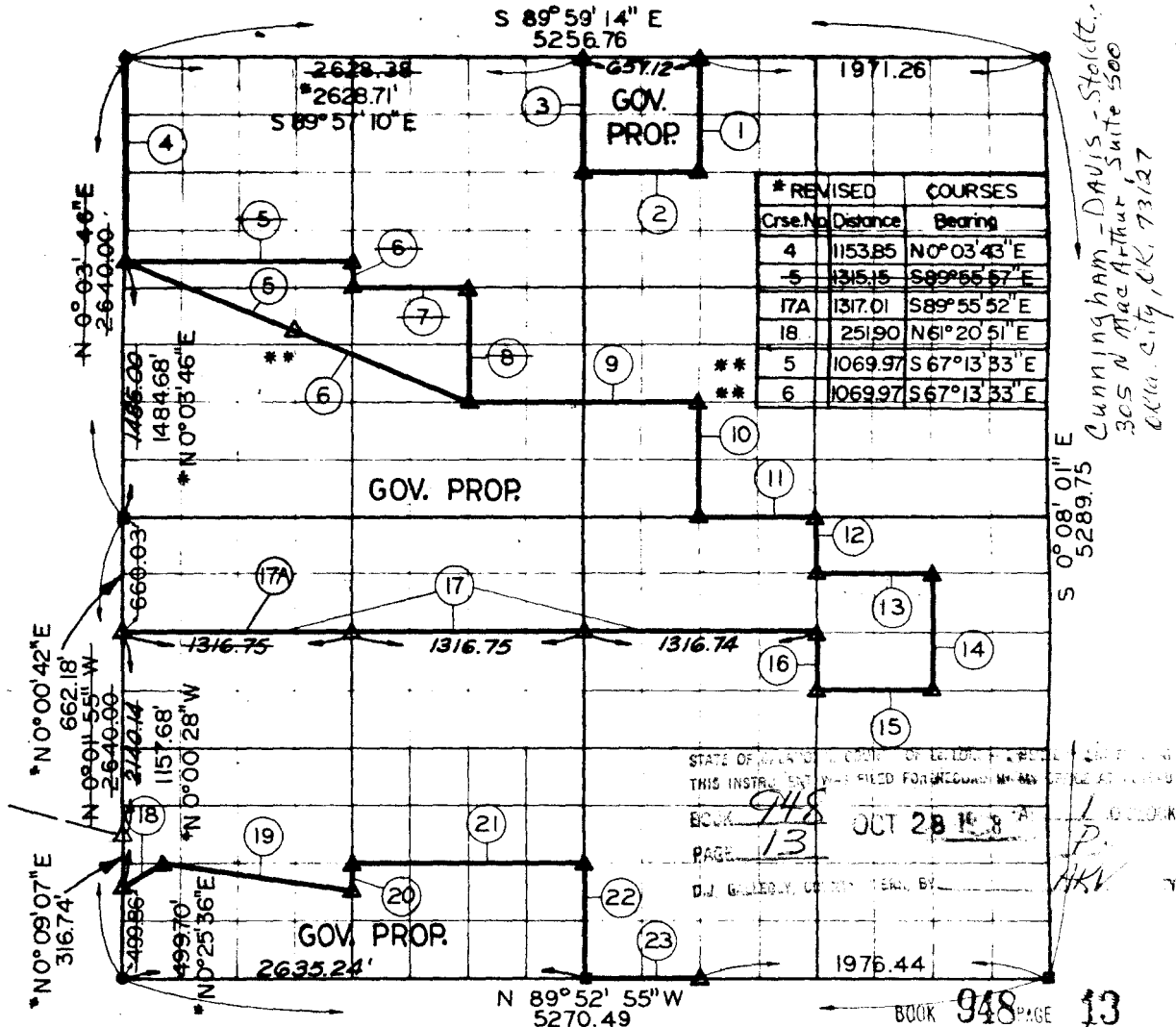


SEC. 13 T-5-N R-24-E COUNTY LE FLORE



* REVISED	COURSES	
Crse.No	Distance	Bearing
4	1153.85	N0°03'43"E
5	1315.15	S89°55'57"E
17A	1317.01	S89°55'52"E
18	251.90	N61°20'51"E
5	1069.97	S67°13'33"E
6	1069.97	S67°13'33"E

Cunningham - Davis - Stoldt,
305 N MacArthur, Suite 500
OKla. City, OK, 73127

STATE OF OKLAHOMA, COUNTY OF LE FLORE, PLAT NO. 13
THIS INSTRUMENT WAS FILED FOR RECORD IN THE PUBLIC OFFICE OF THE COUNTY CLERK OF LE FLORE COUNTY, OKLAHOMA, ON OCT 28 1988
BOOK 948 PAGE 13
D.J. GARDNER, COUNTY CLERK BY: HKV

COURSE NUMBER	DISTANCE	BEARING	COURSE NUMBER	DISTANCE	BEARING
1.	661.53	S00°04'40"E	13.	658.30	S89°52'55"E
2.	657.33	N89°57'39"W	14.	660.00	S00°06'54"E
3.	661.23	N00°03'34"W	15.	658.69	N89°52'55"W
4.	1155.00	S00°03'46"W	16.	330.00	N00°05'47"W
5.	1315.11	S89°56'28"E	17.	3950.24	N89°52'55"W
6.	165.15	S00°00'06"W	18.	260.53	N60°54'32"E
7.	657.63	S89°56'04"E	19.	1111.79	S78°39'06"E
8.	660.92	S00°01'44"E	20.	259.00	N00°02'44"W
9.	1315.85	S89°54'29"E	21.	1317.33	S89°52'55"E
10.	661.53	S00°04'40"E	22.	660.00	S00°03'34"E
11.	658.23	S89°52'55"E	23.	658.81	S89°52'55"E
12.	330.00	S00°05'47"E			

Field Book No. 1-152 December 8, 1969

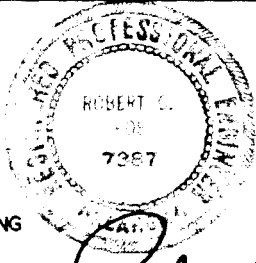
I, Robert C. Poe, a Registered Professional Engineer and a Registered Land Surveyor, do hereby certify that the above plat is a true and accurate survey of Section 13, T-5-N, R-24-E as made under my supervision.

* REVISED JUNE 1983 by HUFFMAN SURVEYING CO. & ENTZ ENGINEERING & ASSOCIATES.

** REVISED OCT. 1988 by CUNNINGHAM-DAVIS-STOLDT, INC.

LEGEND

- △ MONUMENT
- ORIGINAL STONE
- IRON PIN



Robert C. Poe

Robert C. Poe
Reg. Prof. Engr. No. 7387
Reg. Land Surveyor No. LS 602