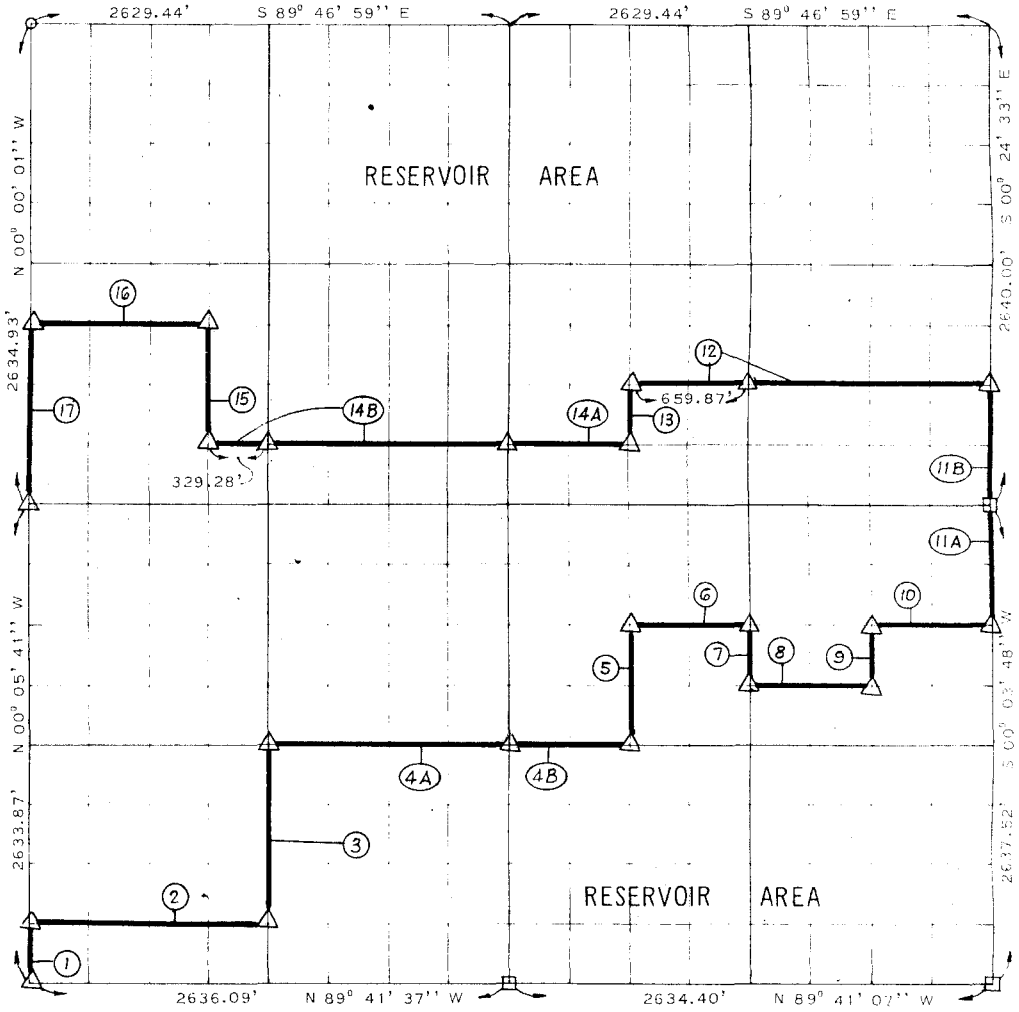


# WISTER RESERVOIR POTEAU RIVER, OKLAHOMA

PARTIAL BOUNDARY SURVEYS OF SECTION 16, T 5 N. R 24 E. LEFLORE COUNTY



COURSE	DISTANCE	BEARING	COURSE	DISTANCE	BEARING
1	329.23'	N 00° 05' 41'' W			
2	1317.97'	S 89° 41' 53'' E			
3	988.01'	N 00° 06' 25'' W			
4A	1317.76'	S 89° 42' 41'' E			
4B	659.65'	S 89° 42' 27'' E			
5	659.01'	N 00° 04' 26'' W			
6	660.18'	S 89° 43' 06'' E			
7	329.56'	S 00° 01' 41'' E			
8	659.91'	S 89° 42' 46'' E			
9	329.63'	N 00° 01' 04'' E			
10	660.18'	S 89° 43' 06'' E			
11A	659.38'	N 00° 03' 48'' E			
11B	660.00'	N 00° 24' 33'' W			
12	1979.60'	N 89° 44' 34'' W			
13	329.76'	S 00° 11' 31'' E			
14A	660.28'	N 89° 44' 10'' W			
14B	1646.40'	N 89° 44' 34'' W			
15	659.02'	N 00° 02' 42'' W			
16	987.33'	N 89° 45' 16'' W			
17	987.88'	S 00° 00' 01'' E			
	1646.07'	3.12 mi			

SURVEY BOOK 1-221

**LEGEND**

- △ C E MONUMENT
- HWY DEPT MON
- ORIGINAL STONE
- IRON PIN

CONTRACT NO DACW 56-73-C-0181

PERFORMED UNDER SUPERVISION OF  
US ARMY ENGINEER DISTRICT TULSA  
CORPS OF ENGINEERS

**CERTIFICATE OF SURVEY**

THIS DRAWING CORRECTLY REPRESENTS A SECTION SURVEY  
COMPLETED UNDER MY SUPERVISION

**SLADE**  
CONSULTING ENGINEERS  
8 NW 65TH STREET - P.O. BOX 14130  
OKLAHOMA CITY, OKLA. 73114

*James L Slade*  
JAMES L SLADE  
REGISTERED LAND SURVEYOR  
OKLAHOMA No. 1

1-10-74

# WISTE RESERVOIR

POTEAU RIVER, OKLAHOMA

## SECTION AND QUARTER SECTION CORNER REFERENCES FOR

SEC. 16 T 5 N, R 24 E, IM. LEFLORE COUNTY



N.W. CORNER

NORTH 1/4 CORNER

N.E. CORNER

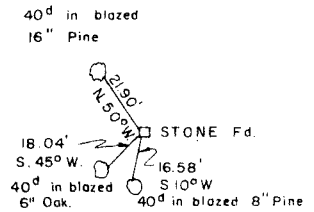
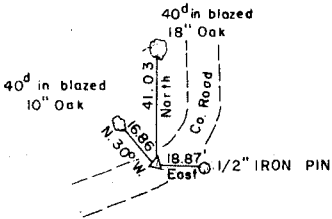
○ 5/8" IRON PIN  
UNDER WATER

+ IN LAKE

+ IN LAKE

WEST 1/4 CORNER

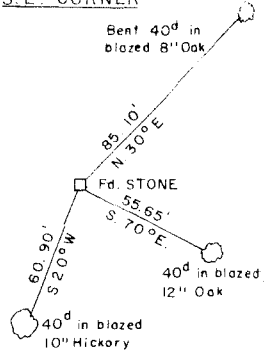
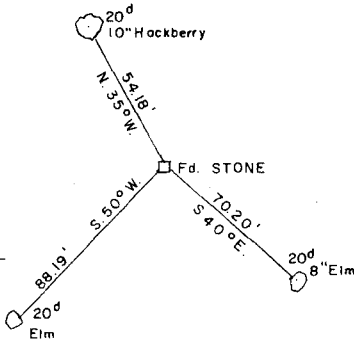
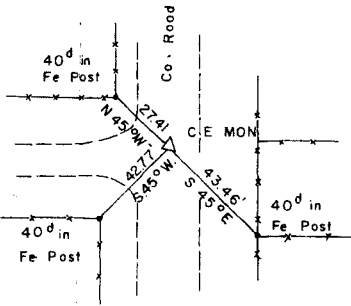
EAST 1/4 CORNER



S.W. CORNER

SOUTH 1/4 CORNER

S.E. CORNER



*James R. Slade*

Scale: 1" = 50'

Date: 1-10-74

Field Book No. 1-221

### LEGEND

- △ Monument
- Original Corner
- Iron Pin