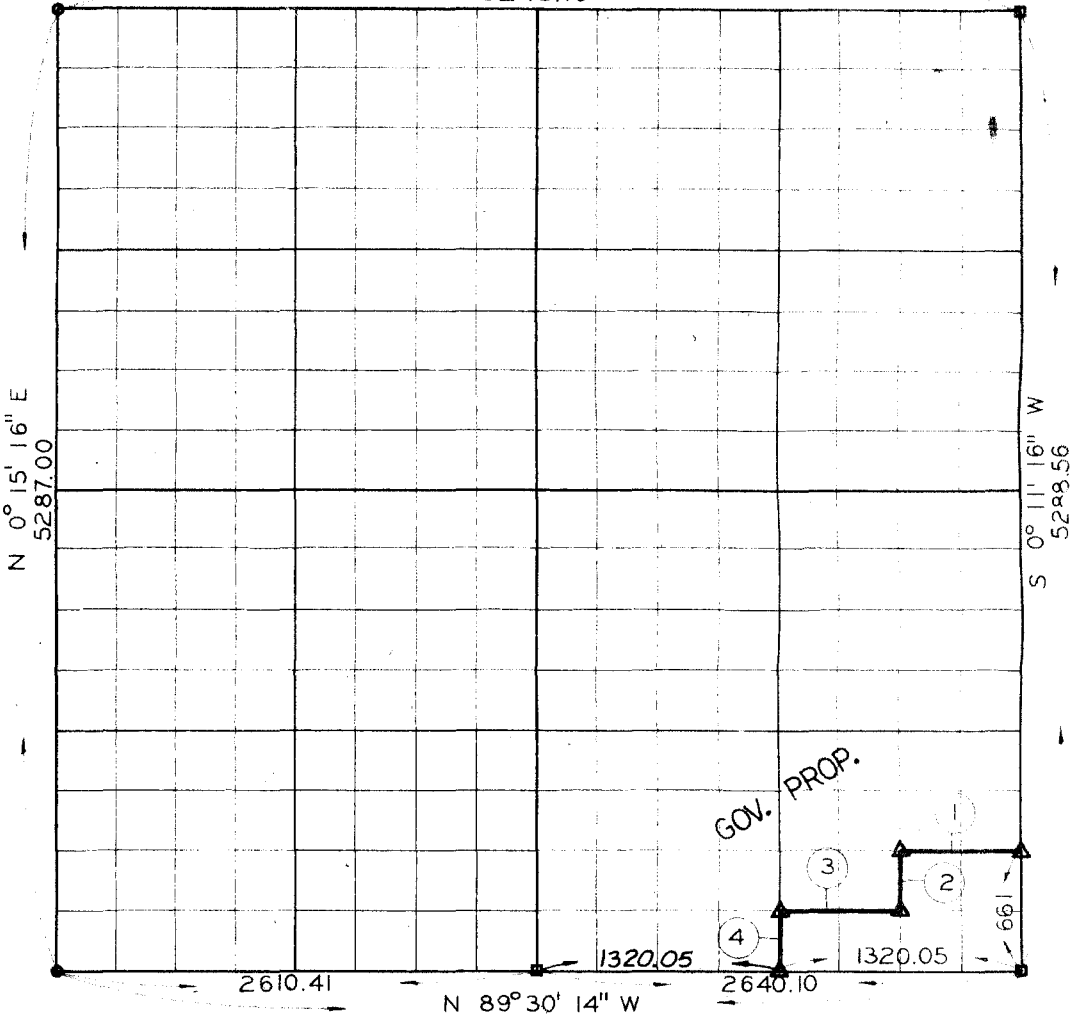


SEC. 18 T-5-N R-24-E COUNTY LE FLORE

S 89° 31' 14" E
5243.70



COURSE NUMBER	DISTANCE	BEARING	COURSE NUMBER	DISTANCE	BEARING
1.	660.03	N89°31'44"W			
2.	330.50	S00°11'16"W			
3.	660.02	N89°31'44"W			
4.	330.50	S00°11'16"W			
	1981.05	= .37			

Field Book No. 1-147 December 8, 1969

I, Robert C. Poe, a Registered Professional Engineer and a Registered Land Surveyor, do hereby certify that the above plat is a true and accurate survey of Section 18, T-5-N, R-24-E as made under my supervision.

LEGEND

- △ MONUMENT
- ORIGINAL STONE
- IRON PIN

Robert C. Poe
Reg. Prof. Engr. No. 7387
Reg. Land Surveyor No. LS 602