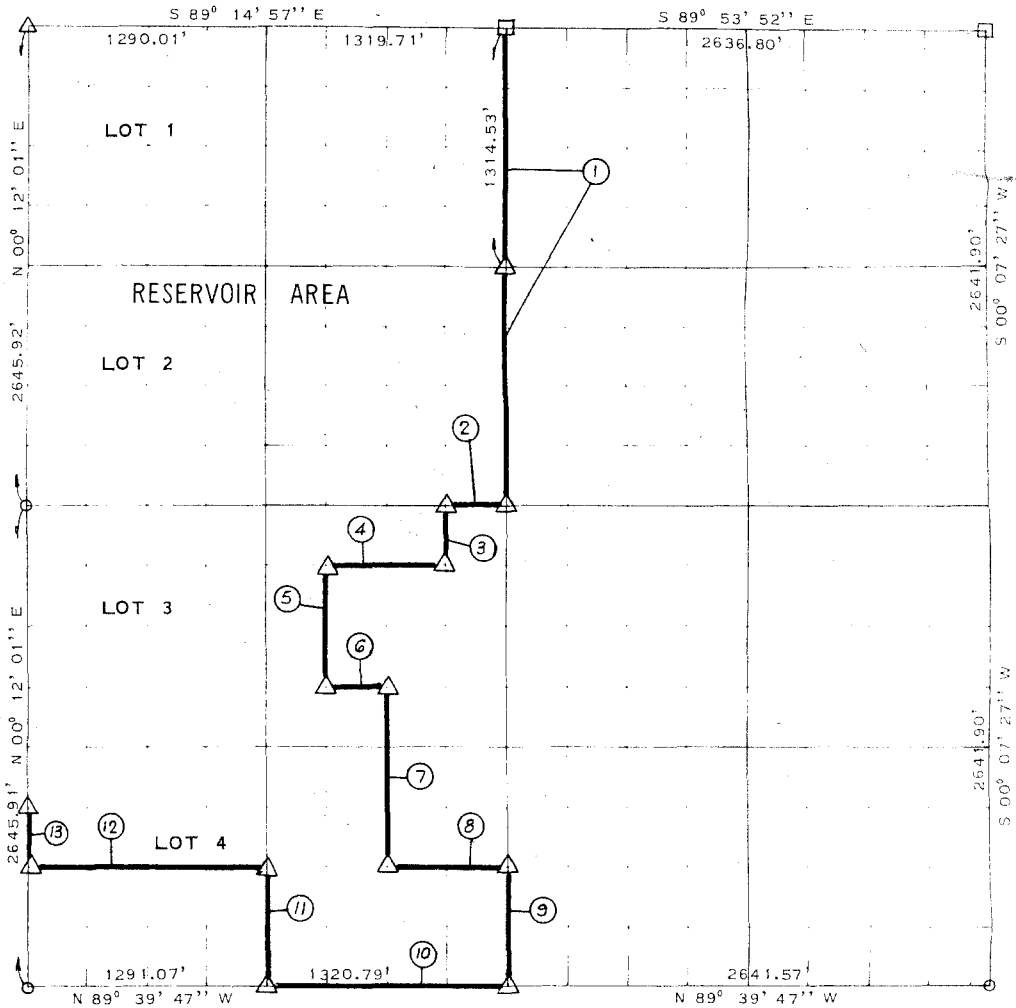


# WISTER RESERVOIR

## POTEAU RIVER, OKLAHOMA

PARTIAL BOUNDARY SURVEYS OF SECTION 19, T 5 N R 24 E LEFLORE COUNTY



COURSE	DISTANCE	BEARING	COURSE	DISTANCE	BEARING
1	2629.06'	S 00° 10' 33" W			
2	330.05'	N 89° 37' 09" W			
3	330.52'	S 00° 10' 44" W			
4	660.15'	N 89° 37' 29" W			
5	661.17'	S 00° 11' 06" W			
6	330.11'	S 89° 38' 08" E			
7	991.66'	S 00° 10' 55" W			
8	660.32'	S 89° 39' 08" E			
9	660.98'	S 00° 10' 33" W			
10	1320.79'	N 89° 39' 47" W			
11	661.23'	N 00° 11' 17" E			
12	1290.93'	N 89° 39' 08" W			
13	330.74'	N 00° 12' 01" E			

SURVEY BOOK 1-215

**LEGEND**

- △ C E MONUMENT      ● HWY DEPT MON
- ORIGINAL STONE      ○ IRON PIN

CONTRACT NO DACW 56-73-C-0181

PERFORMED UNDER SUPERVISION OF  
US ARMY ENGINEER DISTRICT TULSA  
CORPS OF ENGINEERS

BY

**SLADE**

CONSULTING ENGINEERS  
8 NW 65TH STREET - P.O. BOX 14130  
OKLAHOMA CITY, OKLA. 73114

**CERTIFICATE OF SURVEY**

THIS DRAWING CORRECTLY REPRESENTS A SECTION SURVEY  
COMPLETED UNDER MY SUPERVISION

*James L. Slade*  
JAMES L. SLADE  
REGISTERED LAND SURVEYOR

1-10-74

OKLAHOMA NO. 4

# WISTER RESERVOIR

POTEAU RIVER, OKLAHOMA

## SECTION AND QUARTER SECTION CORNER REFERENCES FOR

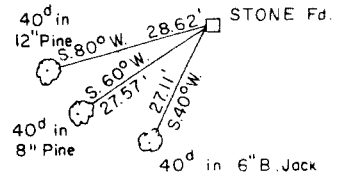
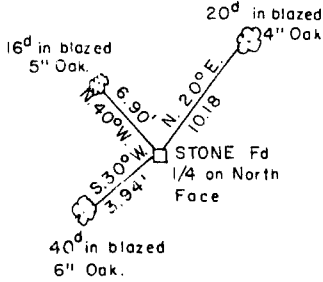
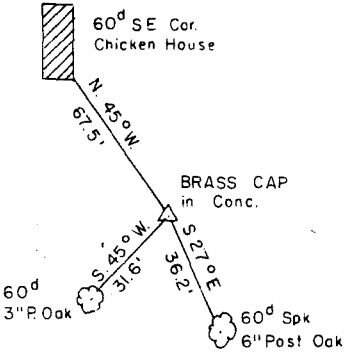
SEC. 19 T 5 N, R 24 E, I.M. LEFLORE COUNTY



N.W. CORNER

NORTH 1/4 CORNER

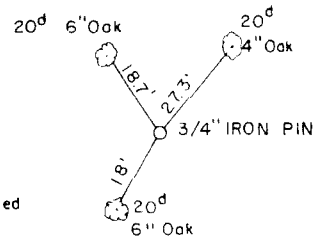
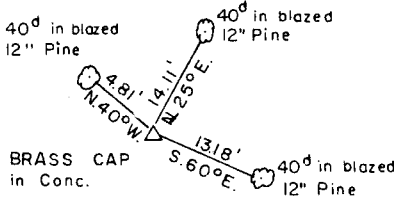
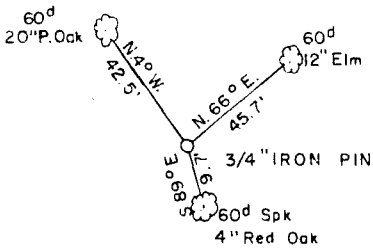
N.E. CORNER



WEST 1/4 CORNER

CENTER SEC. 19

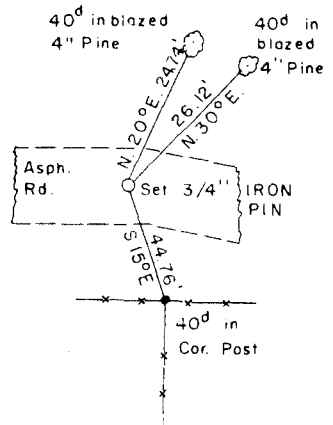
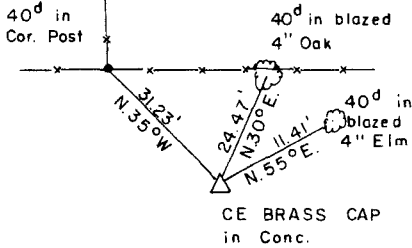
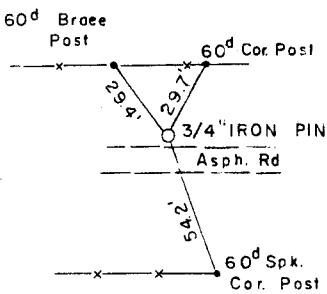
EAST 1/4 CORNER



S.W. CORNER

SOUTH 1/4 CORNER

S.E. CORNER



*James T. Slade*

Scale: 1" = 50'

Date: 1-10-74

Field Book No 1-215

**LEGEND**

- △ Monument
- Original corner
- Iron Pin