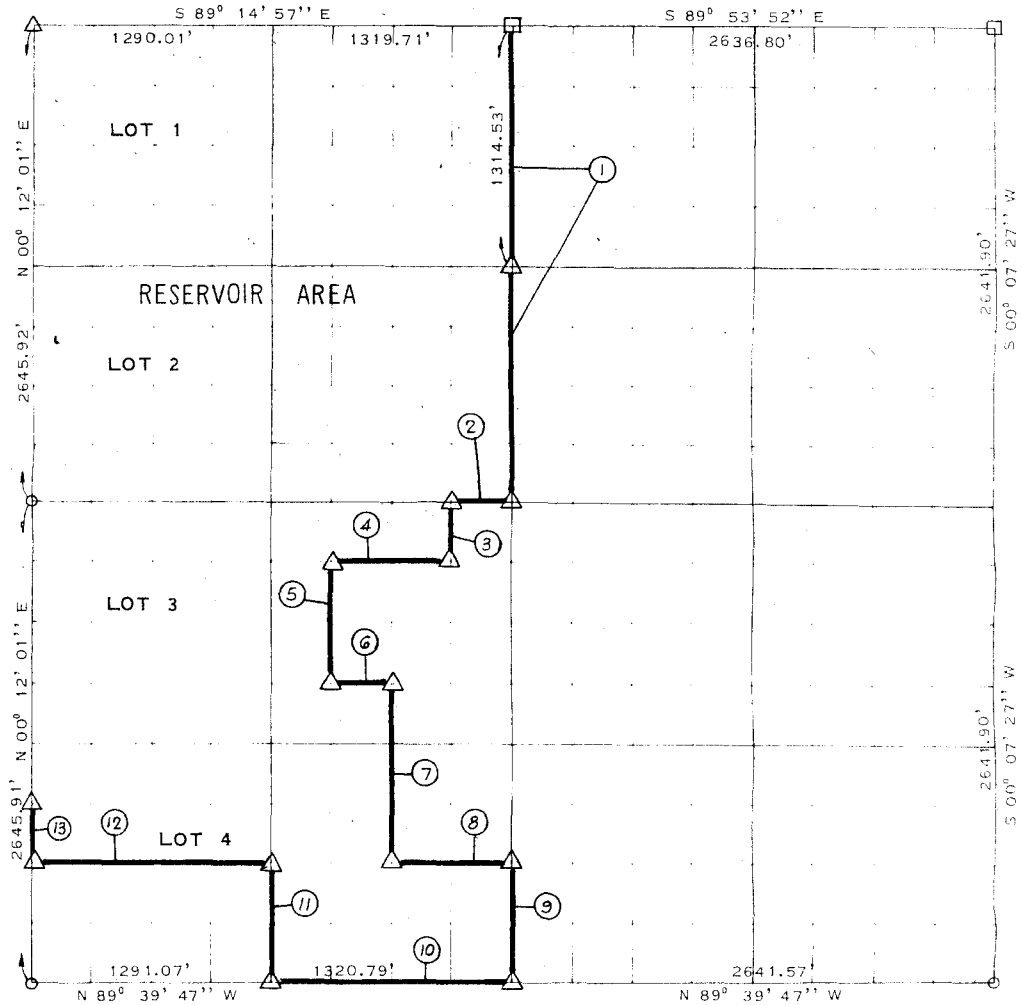


WISTER RESERVOIR POTEAU RIVER, OKLAHOMA

PARTIAL BOUNDARY SURVEYS OF SECTION 19, T 5 N R 24 E LEFLORE COUNTY



COURSE	DISTANCE	BEARING	COURSE	DISTANCE	BEARING
1	2629.06'	S 00° 10' 33'' W			
2	330.05'	N 89° 37' 09'' W			
3	330.52'	S 00° 10' 44'' W			
4	660.15'	N 89° 37' 29'' W			
5	661.17'	S 00° 11' 06'' W			
6	330.11'	S 89° 38' 08'' E			
7	991.66'	S 00° 10' 55'' W			
8	660.32'	S 89° 39' 08'' E			
9	660.98'	S 00° 10' 33'' W			
10	1320.79'	N 89° 39' 47'' W			
11	661.23'	N 00° 11' 17'' E			
12	1290.93'	N 89° 39' 08'' W			
13	330.74'	N 00° 12' 01'' E			
	10854.91'	2.05' misc			

SURVEY BOOK 1-215

LEGEND

- △ C E MONUMENT ● HWY DEPT MON
- ORIGINAL STONE ○ IRON PIN

CONTRACT NO DACW 56-73-C-0181

PERFORMED UNDER SUPERVISION OF
US ARMY ENGINEER DISTRICT, TULSA
CORPS OF ENGINEERS

BY

SLADE & ASSOCIATES

CONSULTING ENGINEERS
8 NW 65TH STREET - P.O. BOX 14130
OKLAHOMA CITY, OKLA. 73114

CERTIFICATE OF SURVEY

THIS DRAWING CORRECTLY REPRESENTS A SECTION SURVEY
COMPLETED UNDER MY SUPERVISION

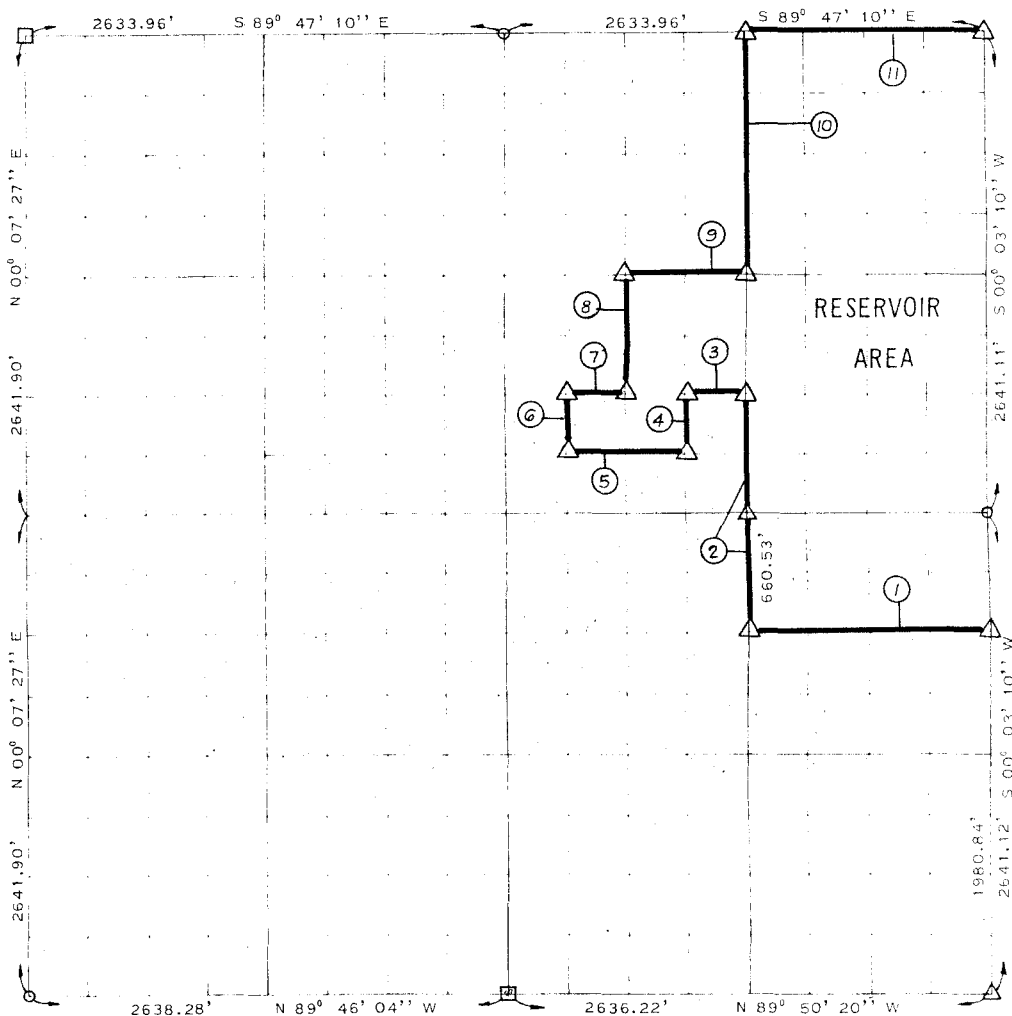
James L Slade
JAMES L SLADE

1-10-74

REGISTERED LAND SURVEYOR
OKLAHOMA NO. 4

WISTER RESERVOIR POTEAU RIVER, OKLAHOMA

PARTIAL BOUNDARY SURVEYS OF SECTION 20, T 5 N R 24 E LEFLORE COUNTY



COURSE	DISTANCE	BEARING	COURSE	DISTANCE	BEARING
1	1317.69'	N 89° 48' 20" W			
2	1320.86'	N 00° 03' 54" E			
3	329.35'	N 89° 47' 33" W			
4	330.17'	S 00° 04' 05" W			
5	658.74'	N 89° 47' 37" W			
6	330.18'	N 00° 04' 27" E			
7	329.35'	S 89° 47' 33" E			
8	660.35'	N 00° 04' 16" E			
9	658.63'	S 89° 47' 25" E			
10	1320.67'	N 00° 03' 54" E			
11	1316.98'	S 89° 47' 10" E			
8572.99 = 1.62					

SURVEY BOOK 1-216

LEGEND

- △ C & E MONUMENT ● HWY DEPT MON
- ORIGINAL STONE ○ IRON PIN

CERTIFICATE OF SURVEY

THIS DRAWING CORRECTLY REPRESENTS A SECTION SURVEY COMPLETED UNDER MY SUPERVISION

James C. Slade

JAMES C. SLADE
REGISTERED LAND SURVEYOR
OKLAHOMA No. _____

1-10-74