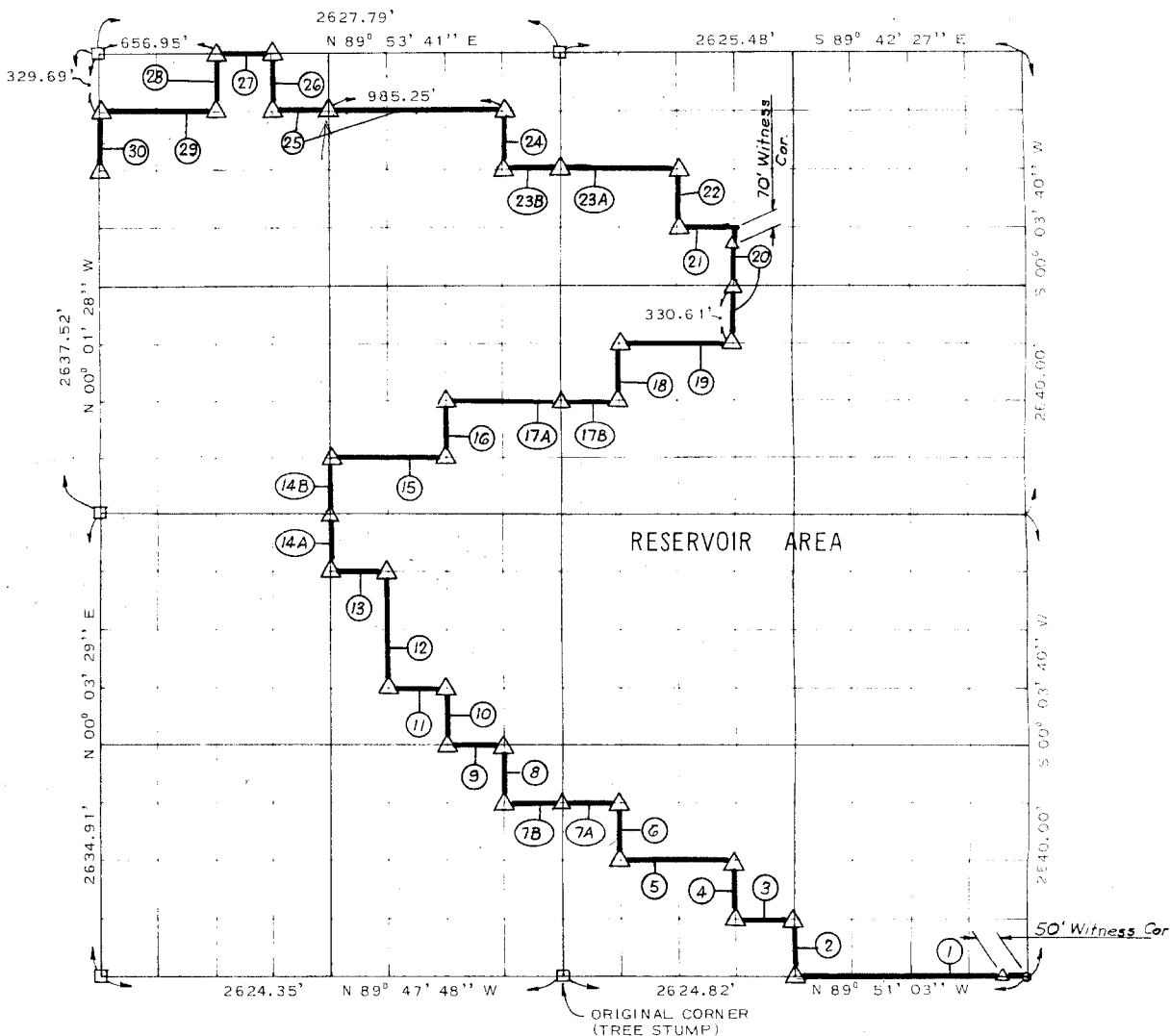


WISTER RESERVOIR

POTEAU RIVER, OKLAHOMA

PARTIAL BOUNDARY SURVEYS OF SECTION 22 T 5 N R 24 E LEFLORE COUNTY



COURSE	DISTANCE	BEARING	COURSE	DISTANCE	BEARING
1	1312.41'	N 89° 51' 03" W	22	330.74'	N 00° 03' 21" E
2	329.92'	N 00° 03' 28" E	23A	656.35'	N 89° 45' 02" W
3	328.11'	N 89° 51' 16" W	23B	328.36'	S 89° 57' 04" W
4	329.90'	N 00° 03' 25" E	24	330.82'	N 00° 02' 40" E
5	656.22'	N 89° 51' 29" W	25	1313.67'	S 89° 55' 23" W
6	329.86'	N 00° 03' 18" E	26	330.17'	N 00° 00' 18" E
7A	328.12'	N 89° 51' 42" W	27	328.47'	S 89° 53' 41" W
7B	328.03'	N 89° 49' 40" W	28	330.01'	S 00° 00' 17" E
8	329.78'	N 00° 03' 17" E	29	656.83'	S 89° 55' 23" W
9	328.03'	N 89° 50' 17" W	30	329.69'	S 00° 01' 28" E
10	329.72'	N 00° 03' 19" E			
11	328.03'	N 89° 50' 54" W			
12	659.32'	N 00° 03' 20" E			
13	328.02'	N 89° 52' 09" W			
14A	329.60'	N 00° 03' 22" E			
14B	330.34'	N 00° 00' 54" E			
15	656.15'	S 89° 54' 28" W			
16	330.66'	N 00° 02' 05" E			
17A	656.27'	S 89° 56' 09" W			
17B	328.15'	S 89° 50' 11" E			
18	330.86'	N 00° 03' 18" E			
19	656.32'	S 89° 48' 54" E			
20	661.23'	N 00° 03' 25" E			
21	328.17'	N 89° 46' 19" W			

SURVEY BOOK 1-218

LEGEND:

- △ C E MONUMENT ● HWY DEPT MON
- ORIGINAL STONE ○ IRON PIN

CONTRACT NO DACW 56-73-C-0181

PERFORMED UNDER SUPERVISION OF
US ARMY ENGINEER DISTRICT, TULSA
CORPS OF ENGINEERS

By

SLADE & ASSOCIATES

CONSULTING ENGINEERS
8 NW 65TH STREET - P.O. BOX 14130
OKLAHOMA CITY, OKLA. 73114

CERTIFICATE OF SURVEY

THIS DRAWING CORRECTLY REPRESENTS A SECTION SURVEY
COMPLETED UNDER MY SUPERVISION

James L Slade
JAMES L SLADE
REGISTERED LAND SURVEYOR

1-10-74

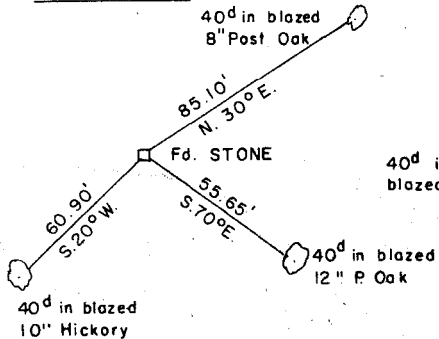
OKLAHOMA NO. 11

WISTER RE SERVOIR
 POTEAU RIVER, OKLAHOMA

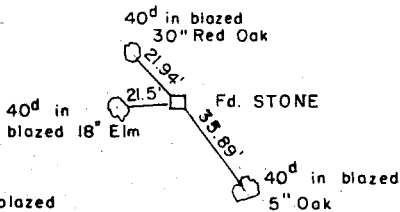
SECTION AND QUARTER SECTION CORNER
 REFERENCES FOR
 SEC. 22 T 5 N, R 24 E, I.M. LEFLORE COUNTY



N.W. CORNER



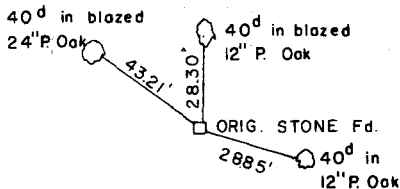
NORTH 1/4 CORNER



N.E. CORNER

+ IN LAKE

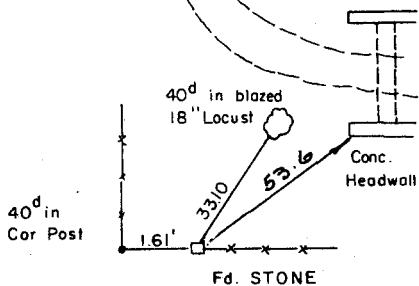
WEST 1/4 CORNER



EAST 1/4 CORNER

+ IN LAKE

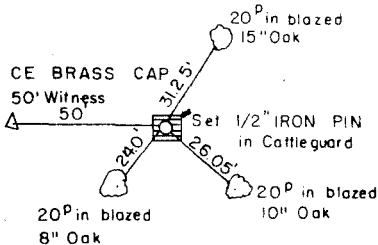
S.W. CORNER



SOUTH 1/4 CORNER

S.E. CORNER

○ Fd. Charred Stump of Orig. Cor Tree



James L. Slade

Scale: 1" = 50'
 Date: 1-10-74
 Field Book No. 1-218

LEGEND

- △ Monument
- Original Corner
- Iron Pin